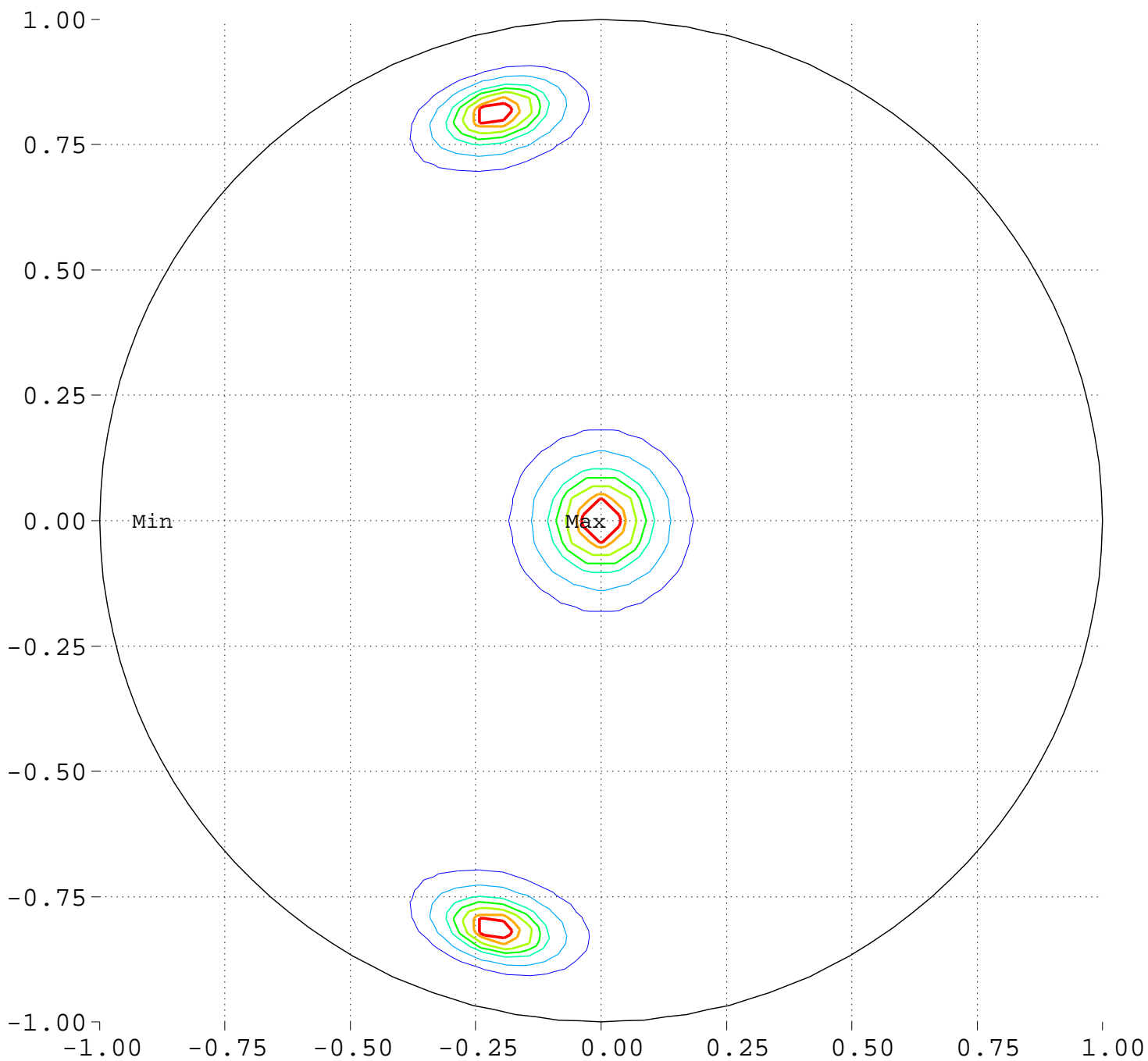


# Maximize Minimum Intensity for 8 Sources Source Locations

North Pole, 0 Deg = Right, 90 Deg = Top



Minimum = 0.00      Maximum = 100.00

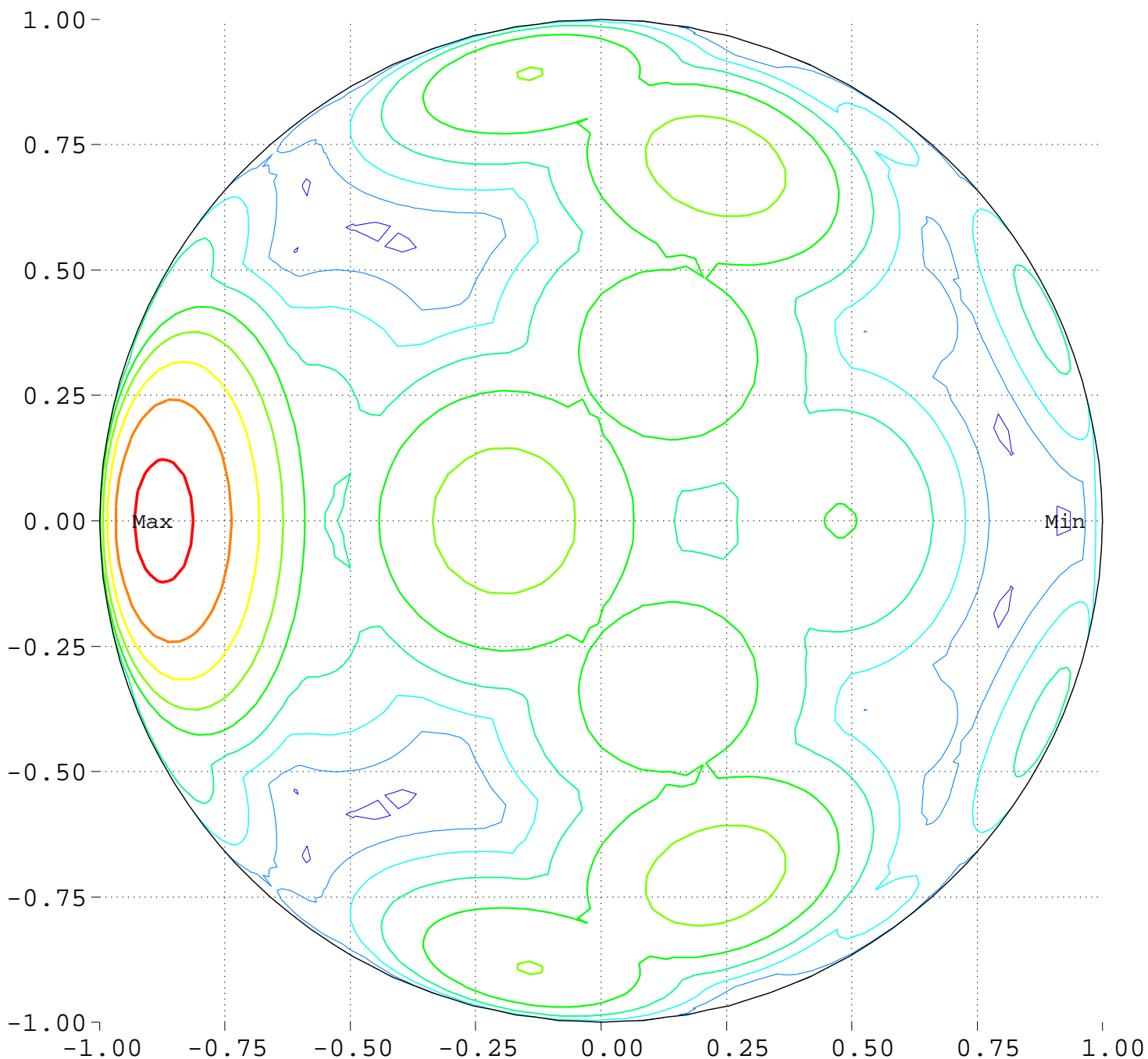
Contours around Nadirs of Sources



# Maximize Minimum Intensity for 8 Sources

Lowest Intensity: 1.830334

North Pole, 0 Deg = Right, 90 Deg = Top



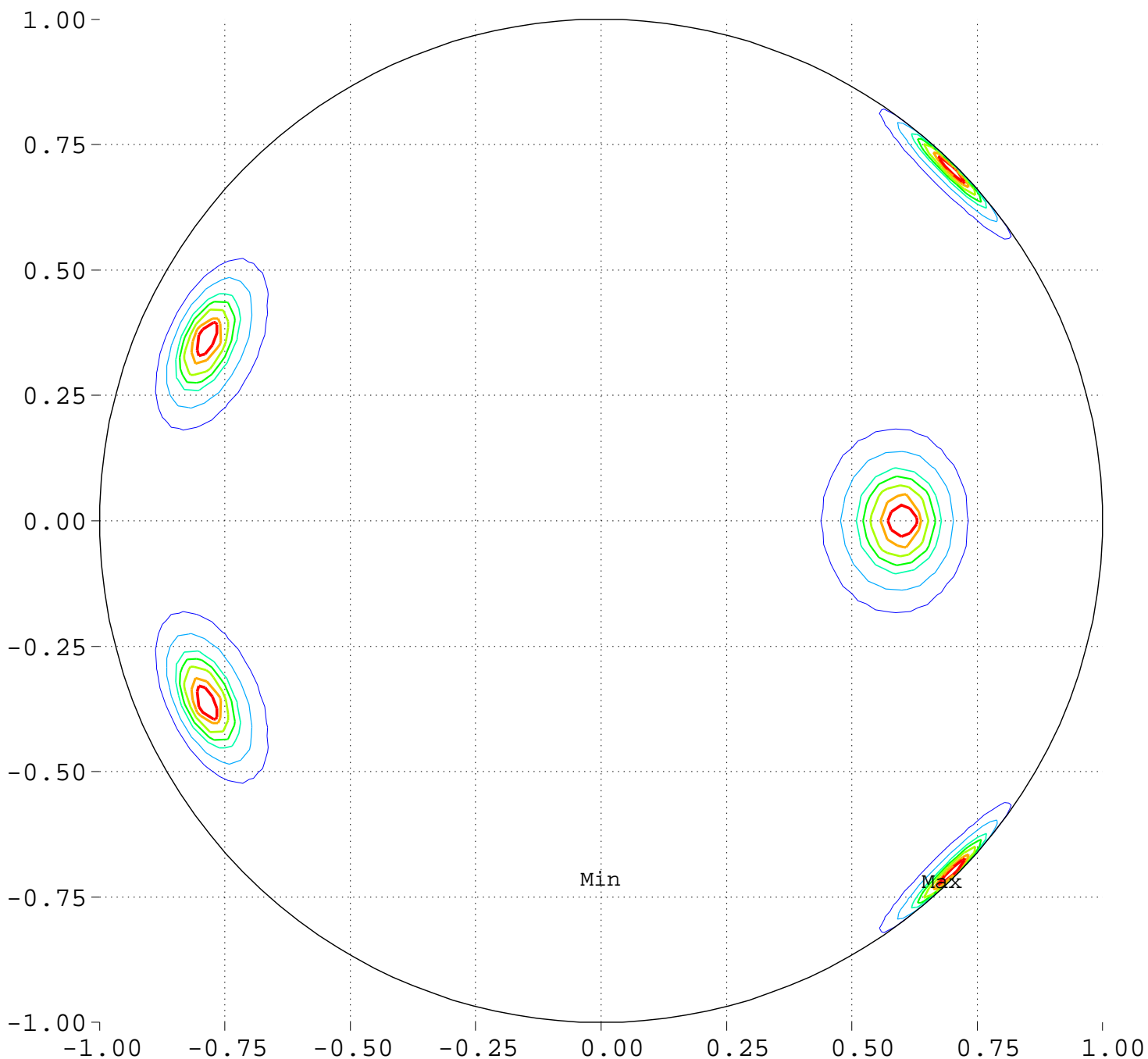
Minimum = 91.88      Maximum = 113.34

Contour Levels of Scaled Intensity

<u>92.5000</u>	<u>95.0000</u>	<u>97.5000</u>	<u>100.0000</u>	<u>102.5000</u>
<u>105.0000</u>	<u>107.5000</u>	<u>110.0000</u>	<u>112.5000</u>	

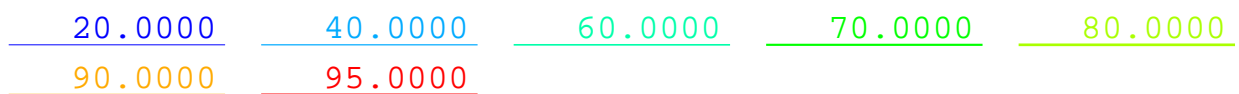
# Maximize Minimum Intensity for 8 Sources Source Locations

South Pole, 0 Deg = Right, 270 Deg = Top



Minimum = 0.00      Maximum = 100.00

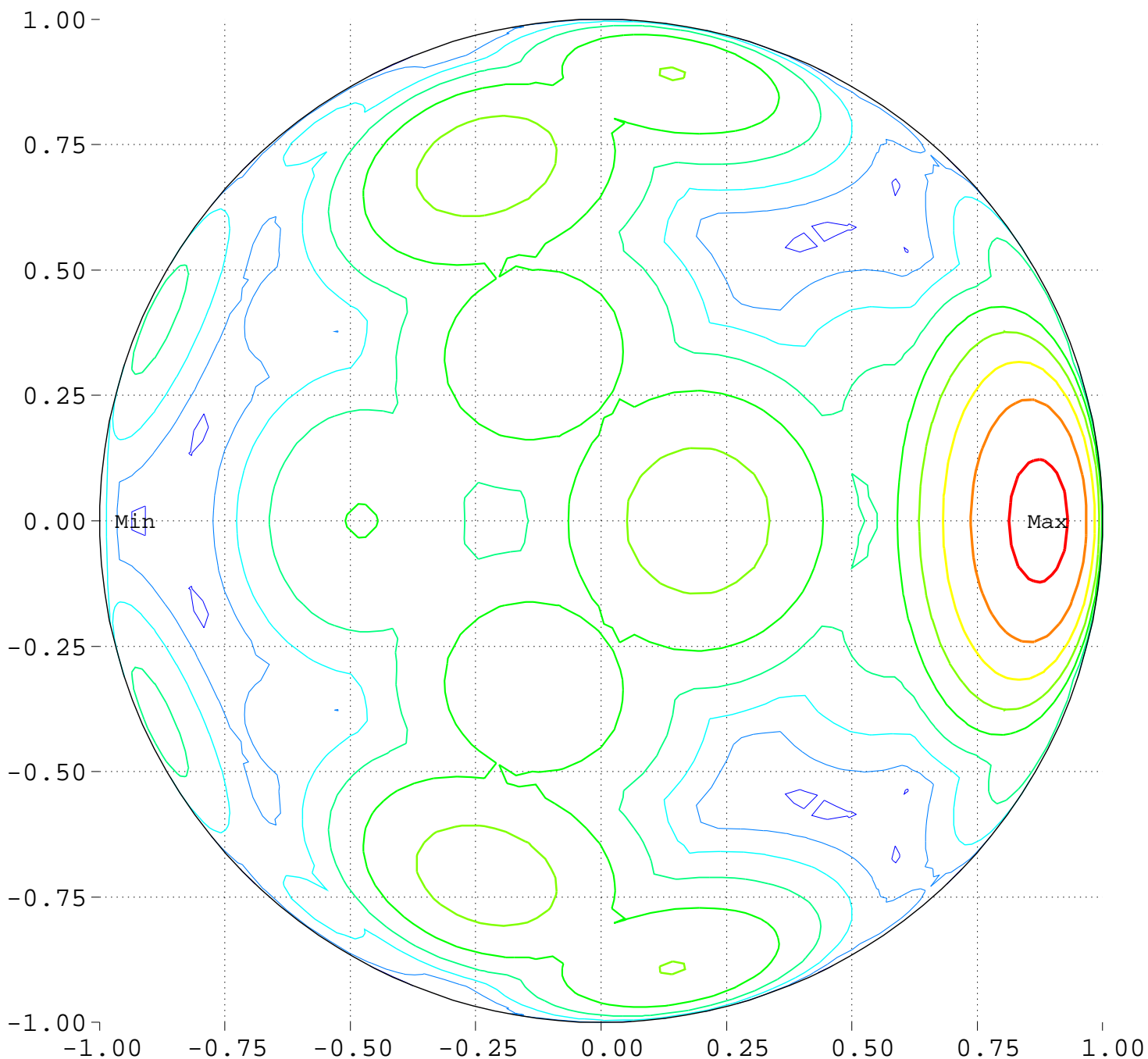
Contours around Nadirs of Sources



# Maximize Minimum Intensity for 8 Sources

Lowest Intensity: 1.830334

South Pole, 0 Deg = Right, 270 Deg = Top



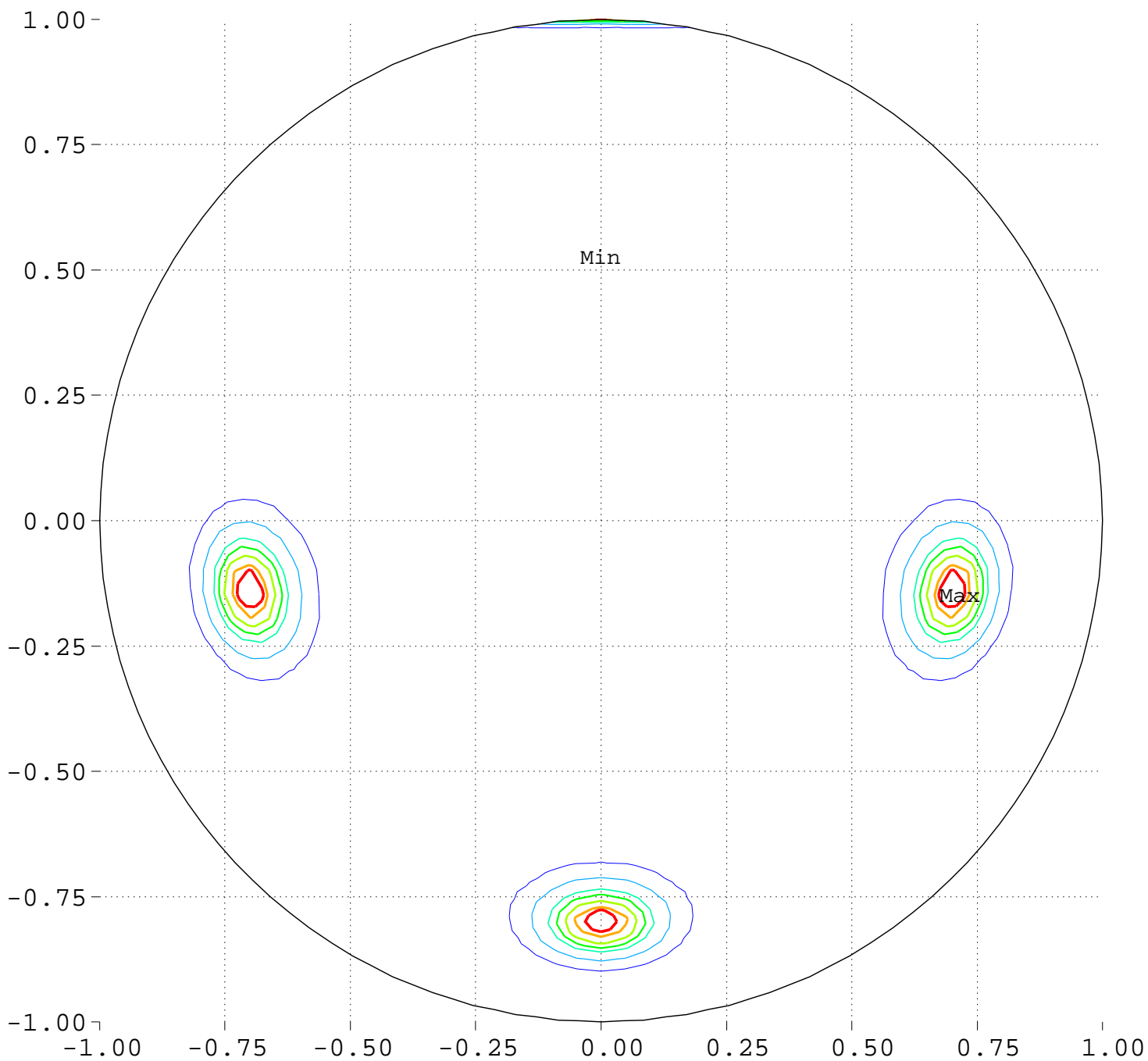
Minimum = 91.87      Maximum = 113.34

Contour Levels of Scaled Intensity

<u>92.5000</u>	<u>95.0000</u>	<u>97.5000</u>	<u>100.0000</u>	<u>102.5000</u>
<u>105.0000</u>	<u>107.5000</u>	<u>110.0000</u>	<u>112.5000</u>	

# Maximize Minimum Intensity for 8 Sources Source Locations

Equator View, Longitude 0 Deg



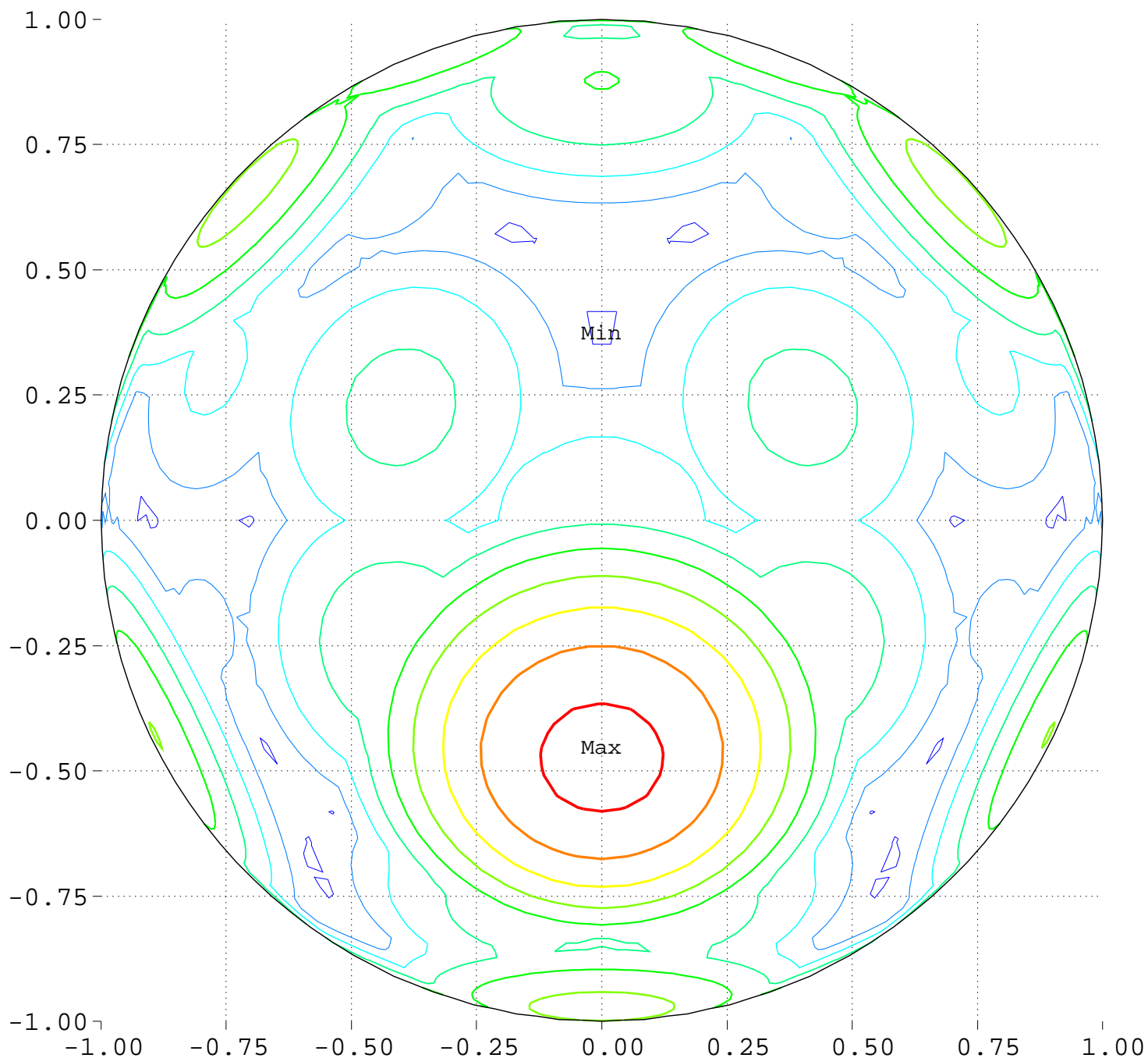
Minimum = 0.00      Maximum = 100.00

Contours around Nadirs of Sources



Maximize Minimum Intensity for 8 Sources  
Lowest Intensity: 1.830334

Equator View, Longitude 0 Deg



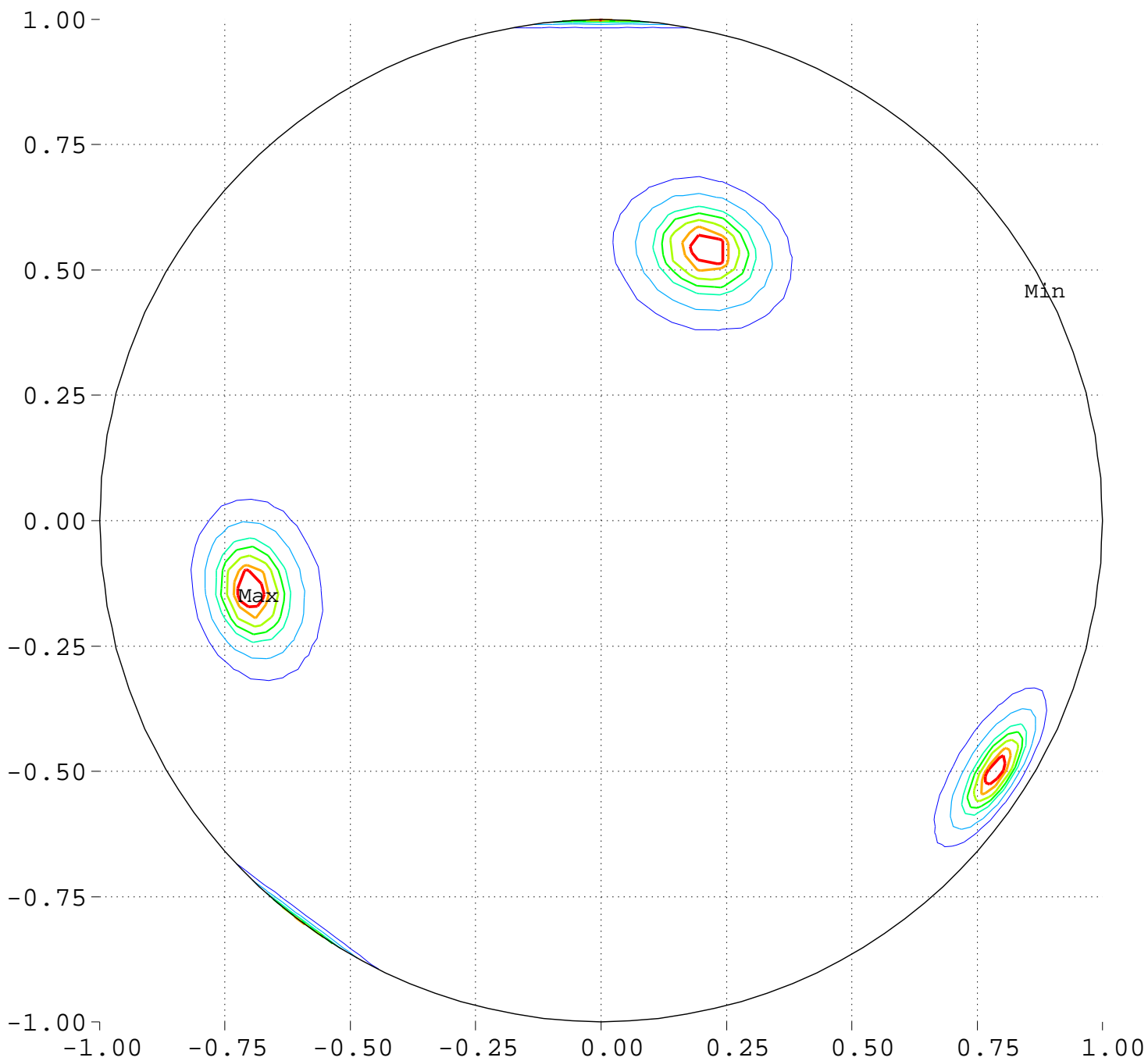
Minimum = 91.88      Maximum = 113.34

Contour Levels of Scaled Intensity

<u>92.5000</u>	<u>95.0000</u>	<u>97.5000</u>	<u>100.0000</u>	<u>102.5000</u>
<u>105.0000</u>	<u>107.5000</u>	<u>110.0000</u>	<u>112.5000</u>	

# Maximize Minimum Intensity for 8 Sources Source Locations

Equator View, Longitude 90 Deg



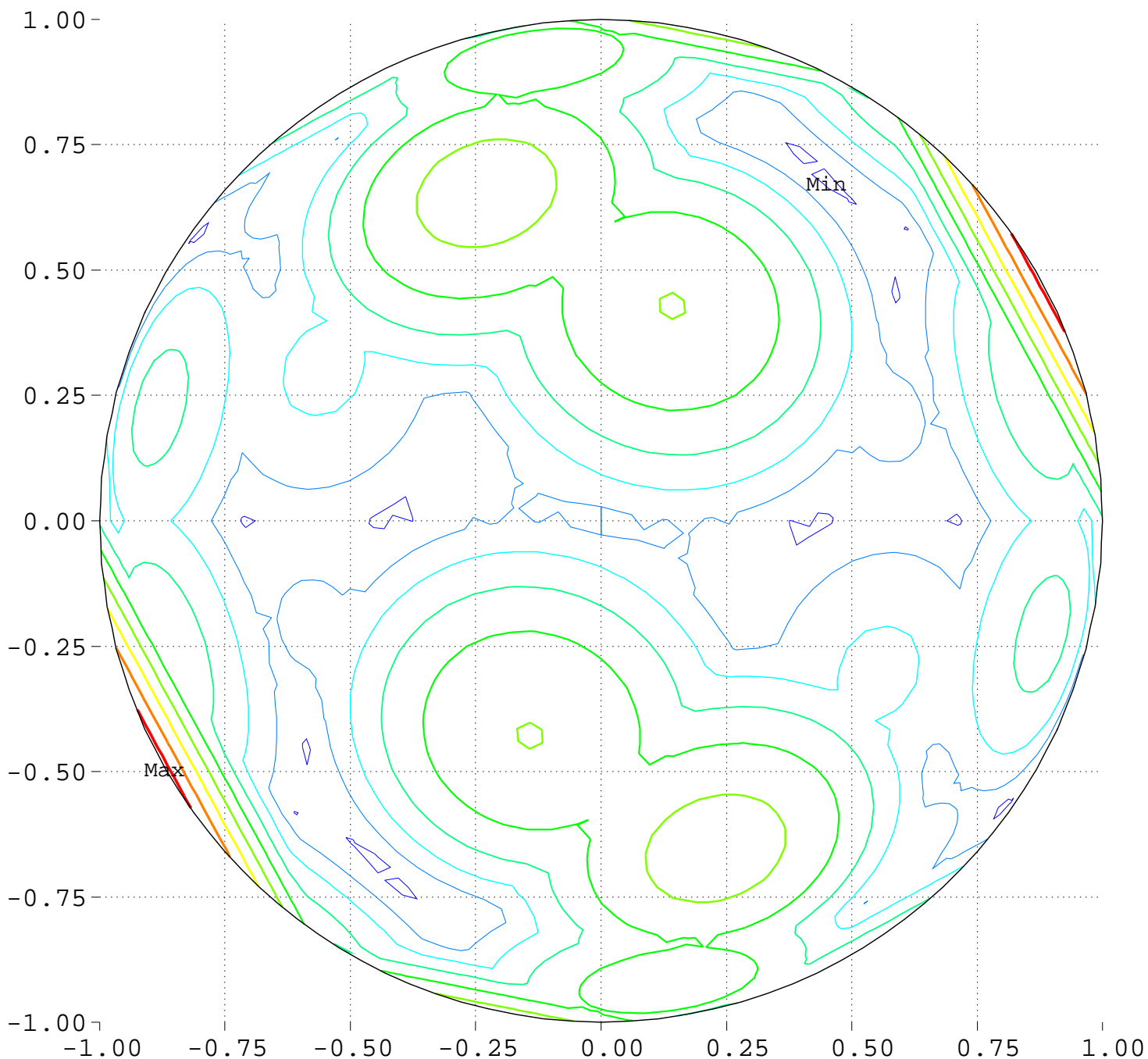
Minimum = 0.00      Maximum = 100.00

Contours around Nadirs of Sources



Maximize Minimum Intensity for 8 Sources  
Lowest Intensity: 1.830334

Equator View, Longitude 90 Deg



Minimum = 92.09      Maximum = 113.32

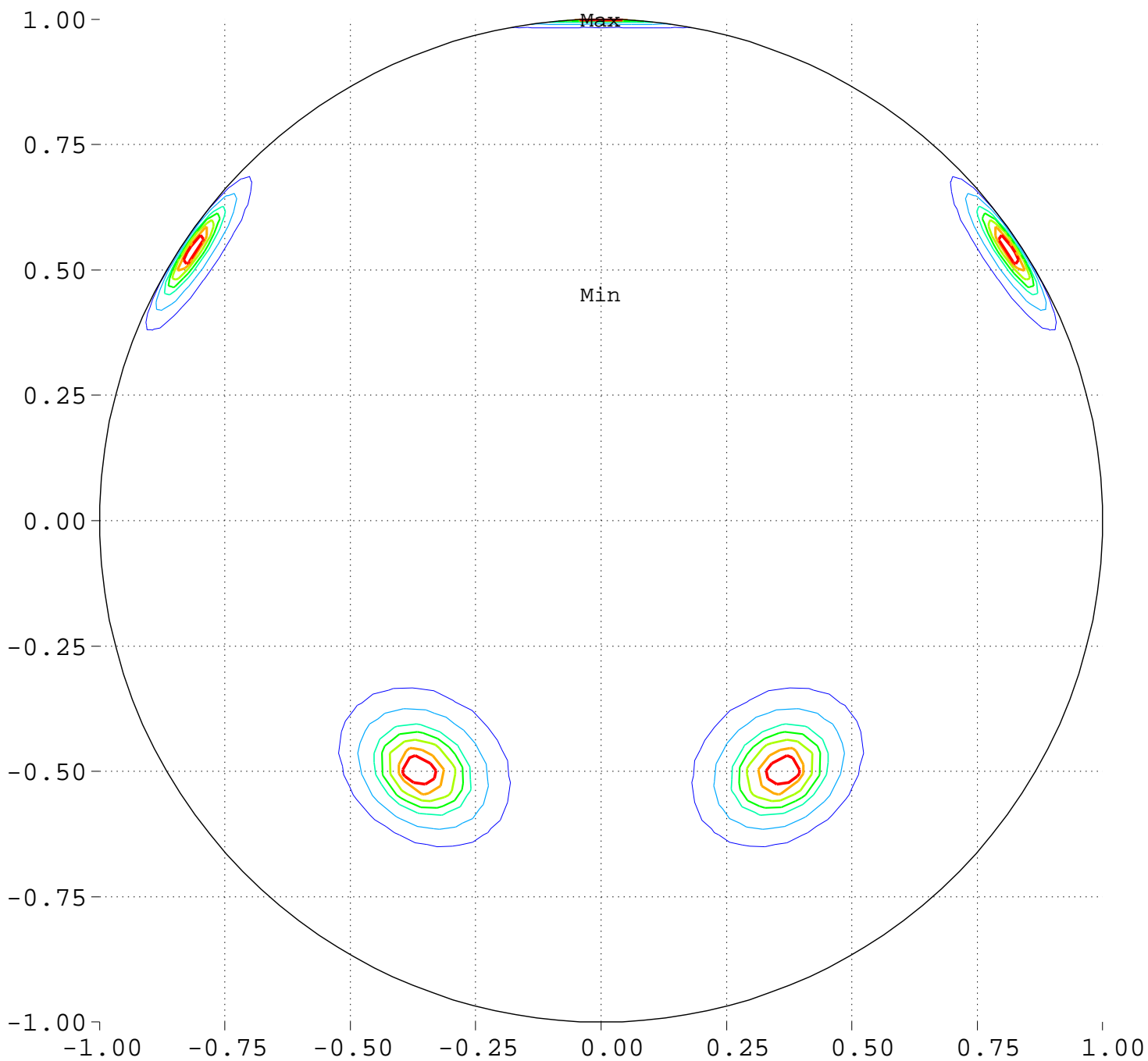
Contour Levels of Scaled Intensity

<u>92.5000</u>	<u>95.0000</u>	<u>97.5000</u>	<u>100.0000</u>	<u>102.5000</u>
<u>105.0000</u>	<u>107.5000</u>	<u>110.0000</u>	<u>112.5000</u>	



# Maximize Minimum Intensity for 8 Sources Source Locations

Equator View, Longitude 180 Deg



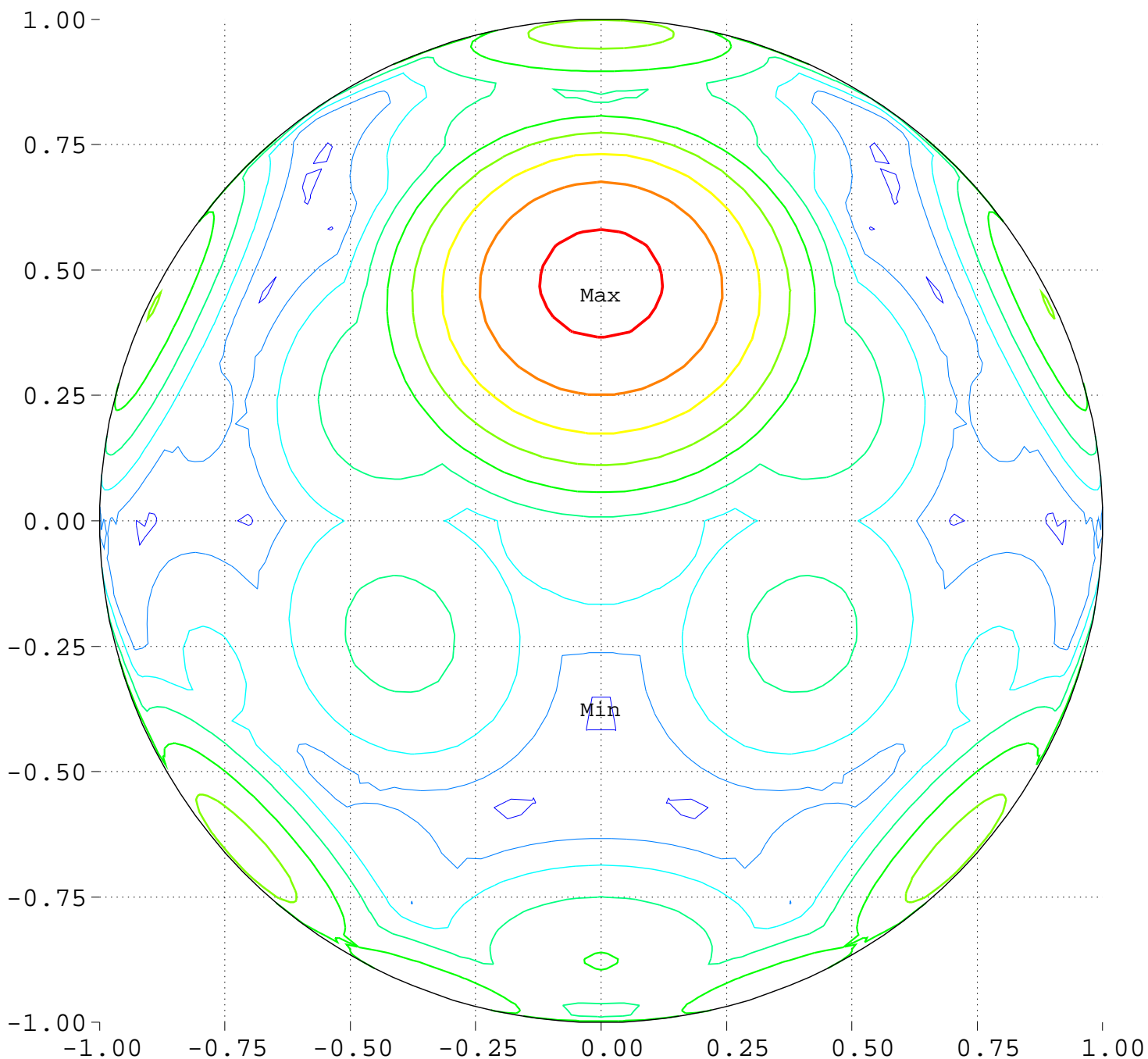
Minimum = 0.00      Maximum = 100.00

Contours around Nadirs of Sources

20.0000    40.0000    60.0000    70.0000    80.0000  
90.0000    95.0000

Maximize Minimum Intensity for 8 Sources  
Lowest Intensity: 1.830334

Equator View, Longitude 180 Deg



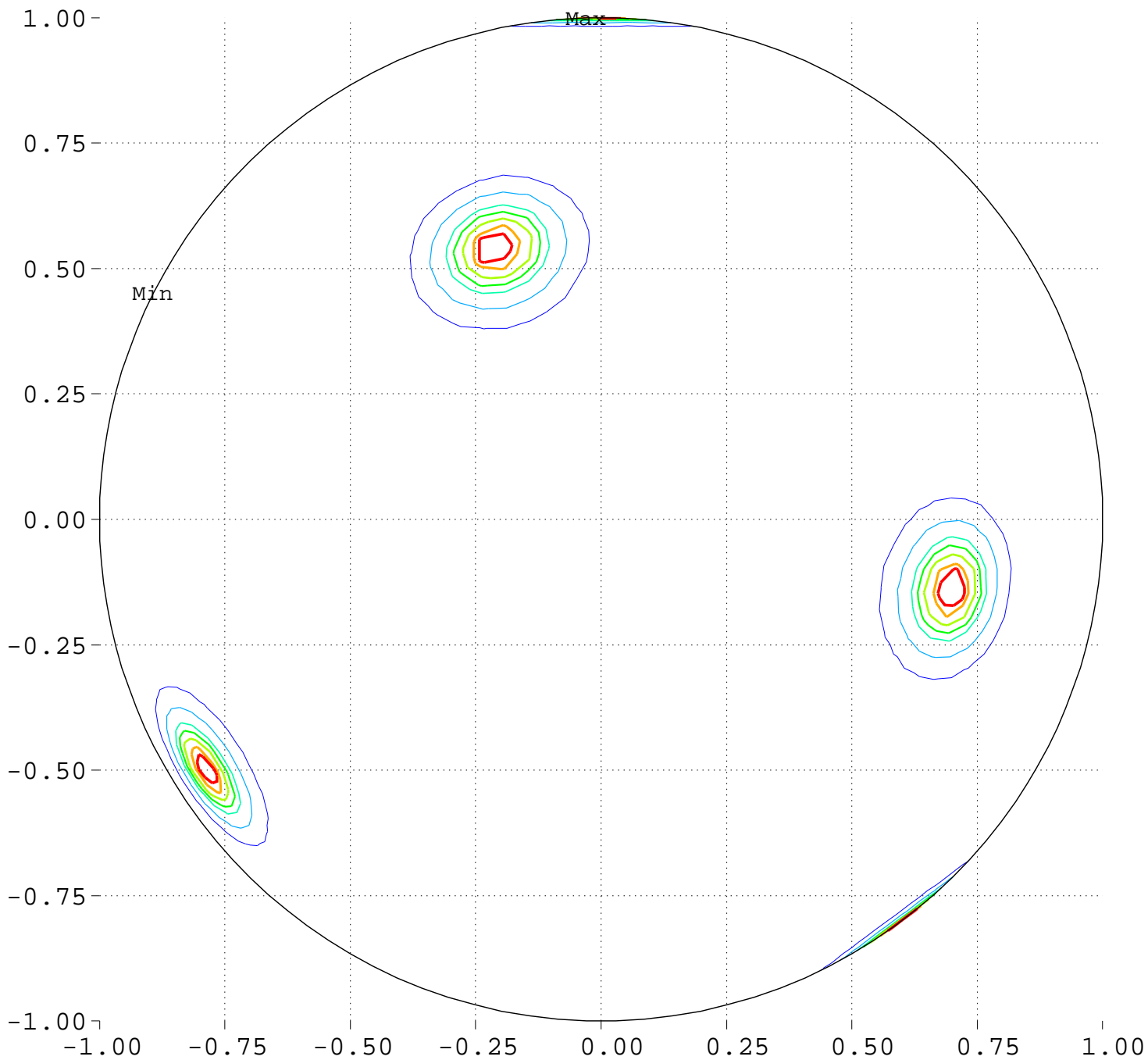
Minimum = 91.87      Maximum = 113.34

Contour Levels of Scaled Intensity

<u>92.5000</u>	<u>95.0000</u>	<u>97.5000</u>	<u>100.0000</u>	<u>102.5000</u>
<u>105.0000</u>	<u>107.5000</u>	<u>110.0000</u>	<u>112.5000</u>	

# Maximize Minimum Intensity for 8 Sources Source Locations

Equator View, Longitude 270 Deg



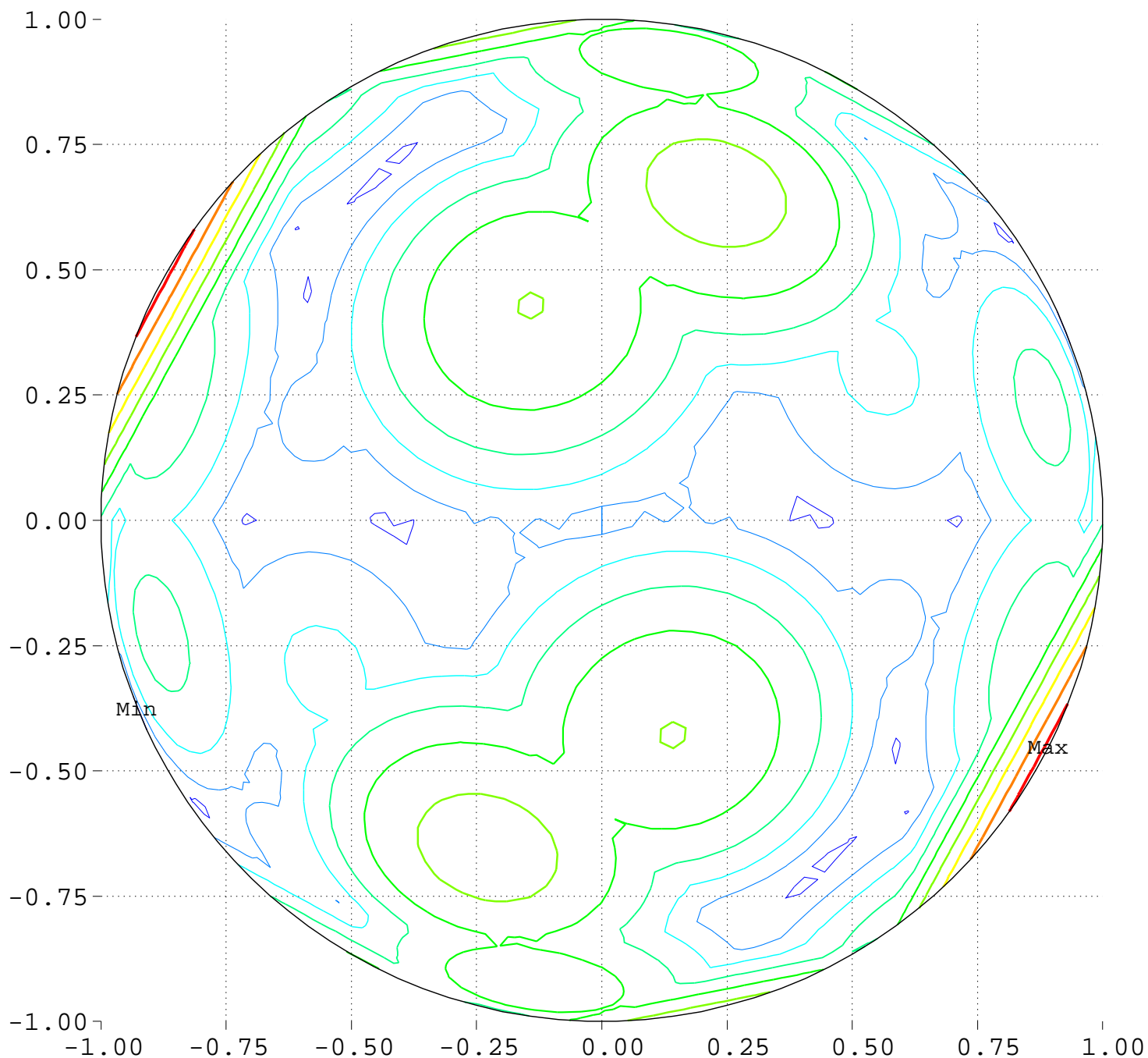
Minimum = 0.00      Maximum = 100.00

Contours around Nadirs of Sources

20.0000    40.0000    60.0000    70.0000    80.0000  
90.0000    95.0000

Maximize Minimum Intensity for 8 Sources  
Lowest Intensity: 1.830334

Equator View, Longitude 270 Deg



Minimum = 91.87      Maximum = 113.34

Contour Levels of Scaled Intensity

<u>92.5000</u>	<u>95.0000</u>	<u>97.5000</u>	<u>100.0000</u>	<u>102.5000</u>
<u>105.0000</u>	<u>107.5000</u>	<u>110.0000</u>	<u>112.5000</u>	