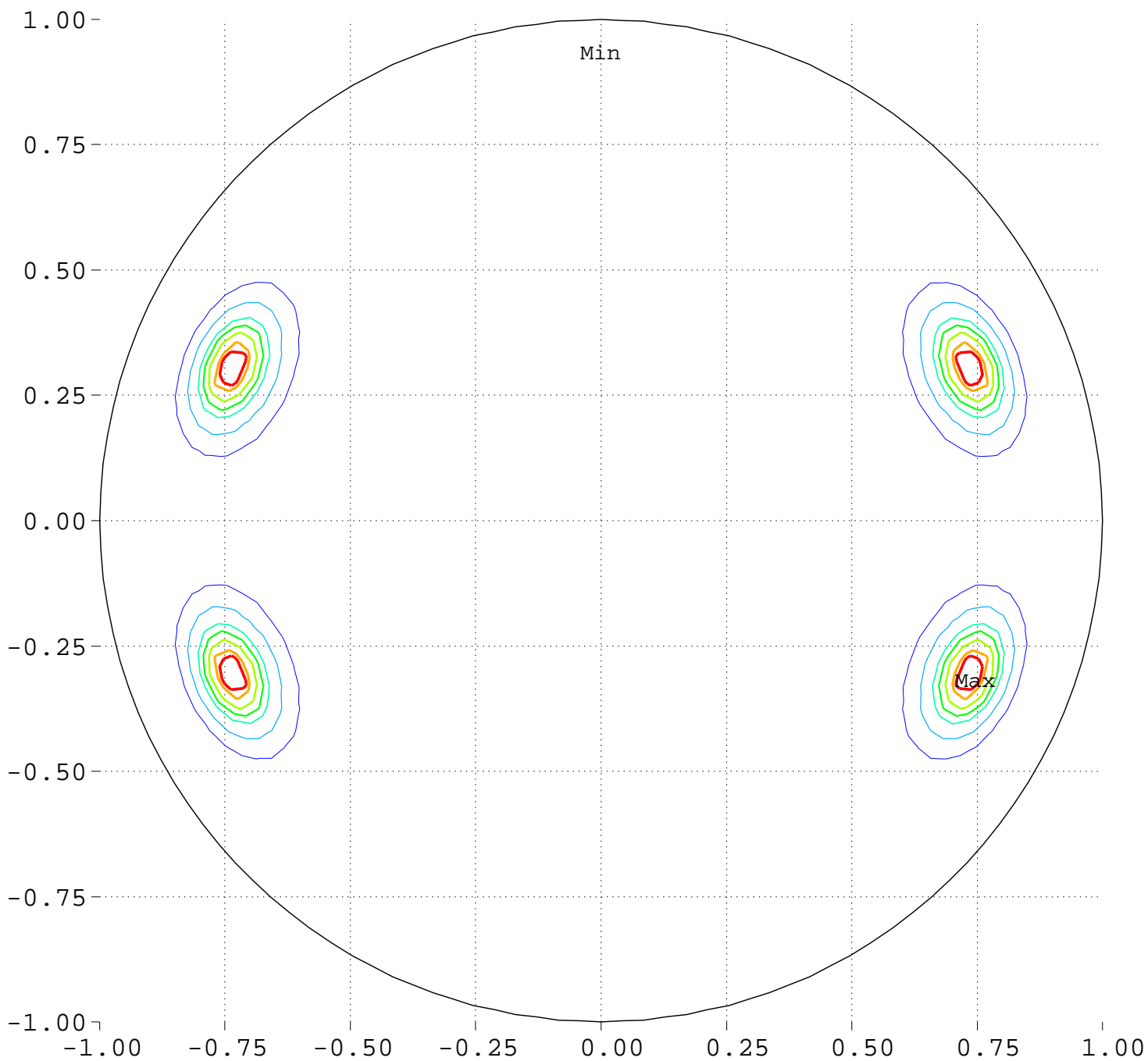


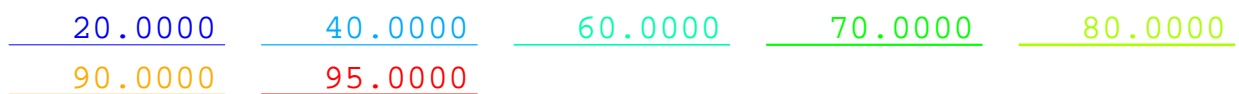
Maximize Minimum Intensity for 8 Sources Source Locations

North Pole, 0 Deg = Right, 90 Deg = Top



Minimum = 0.00 Maximum = 100.00

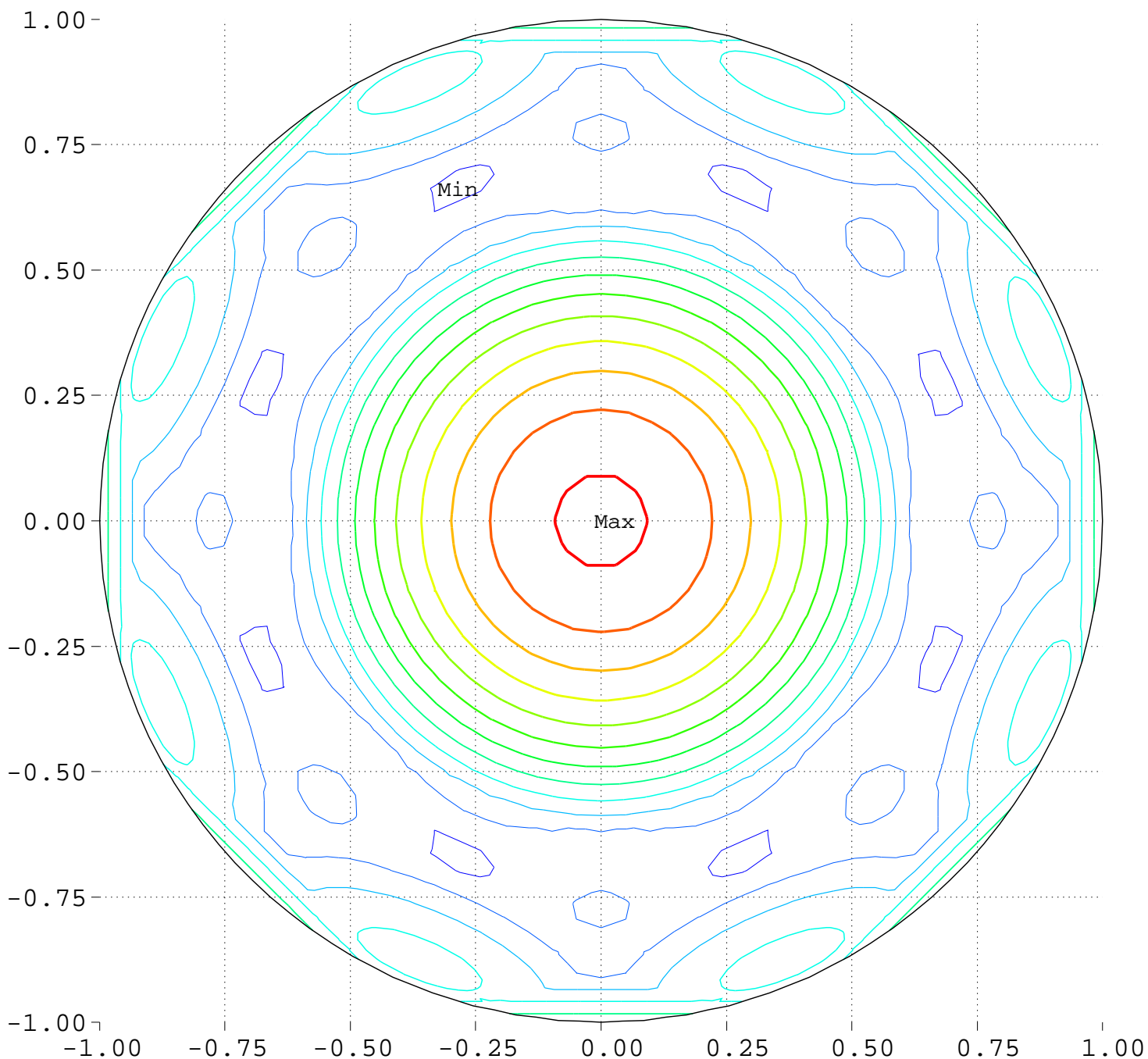
Contours around Nadirs of Sources



Maximize Minimum Intensity for 8 Sources

Lowest Intensity: 1.819992

North Pole, 0 Deg = Right, 90 Deg = Top



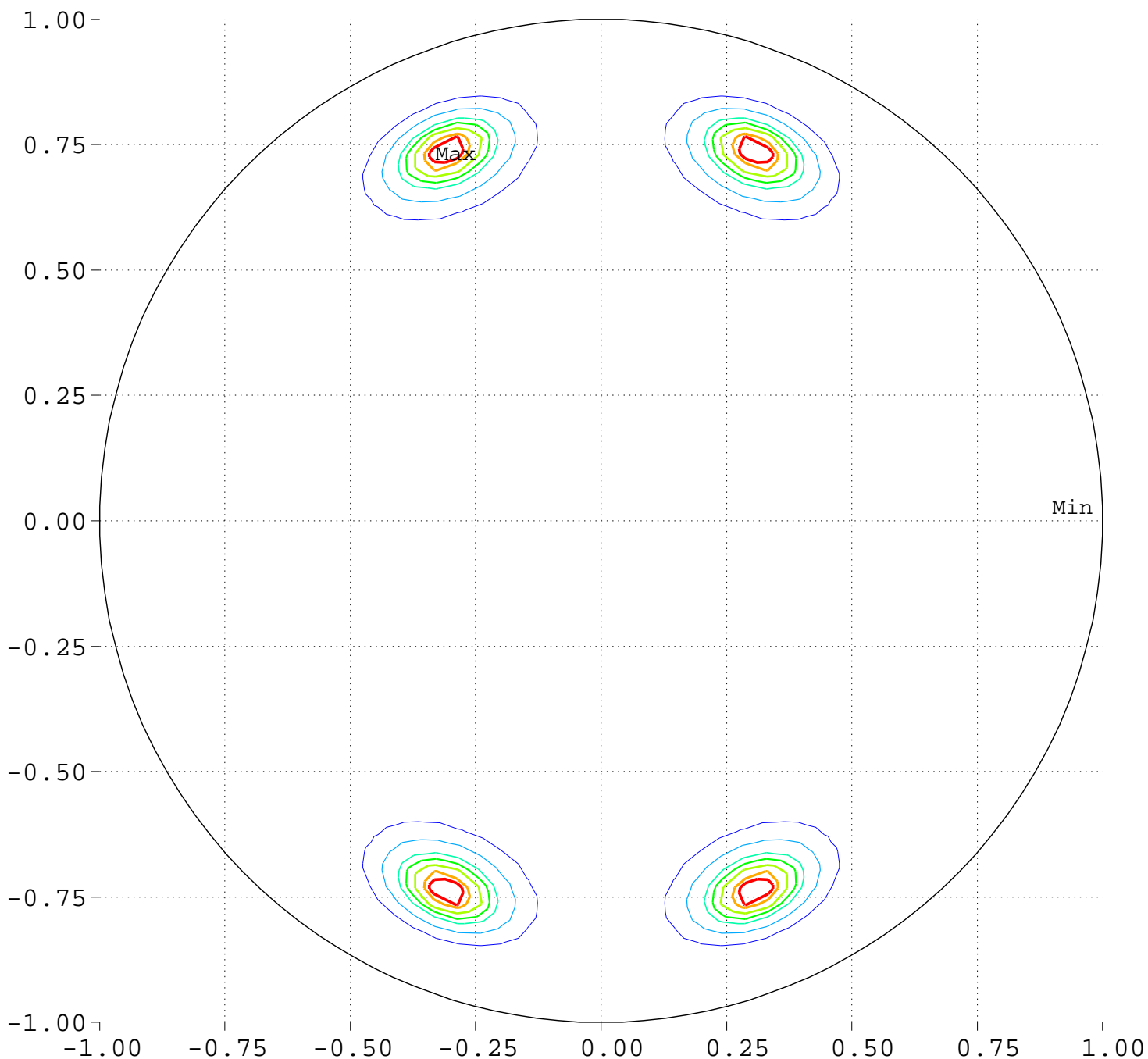
Minimum = 91.52 Maximum = 120.48

Contour Levels of Scaled Intensity

<u>92.5000</u>	<u>95.0000</u>	<u>97.5000</u>	<u>100.0000</u>	<u>102.5000</u>
<u>105.0000</u>	<u>107.5000</u>	<u>110.0000</u>	<u>112.5000</u>	<u>115.0000</u>
<u>117.5000</u>	<u>120.0000</u>			

Maximize Minimum Intensity for 8 Sources Source Locations

South Pole, 0 Deg = Right, 270 Deg = Top



Minimum = 0.00 Maximum = 100.00

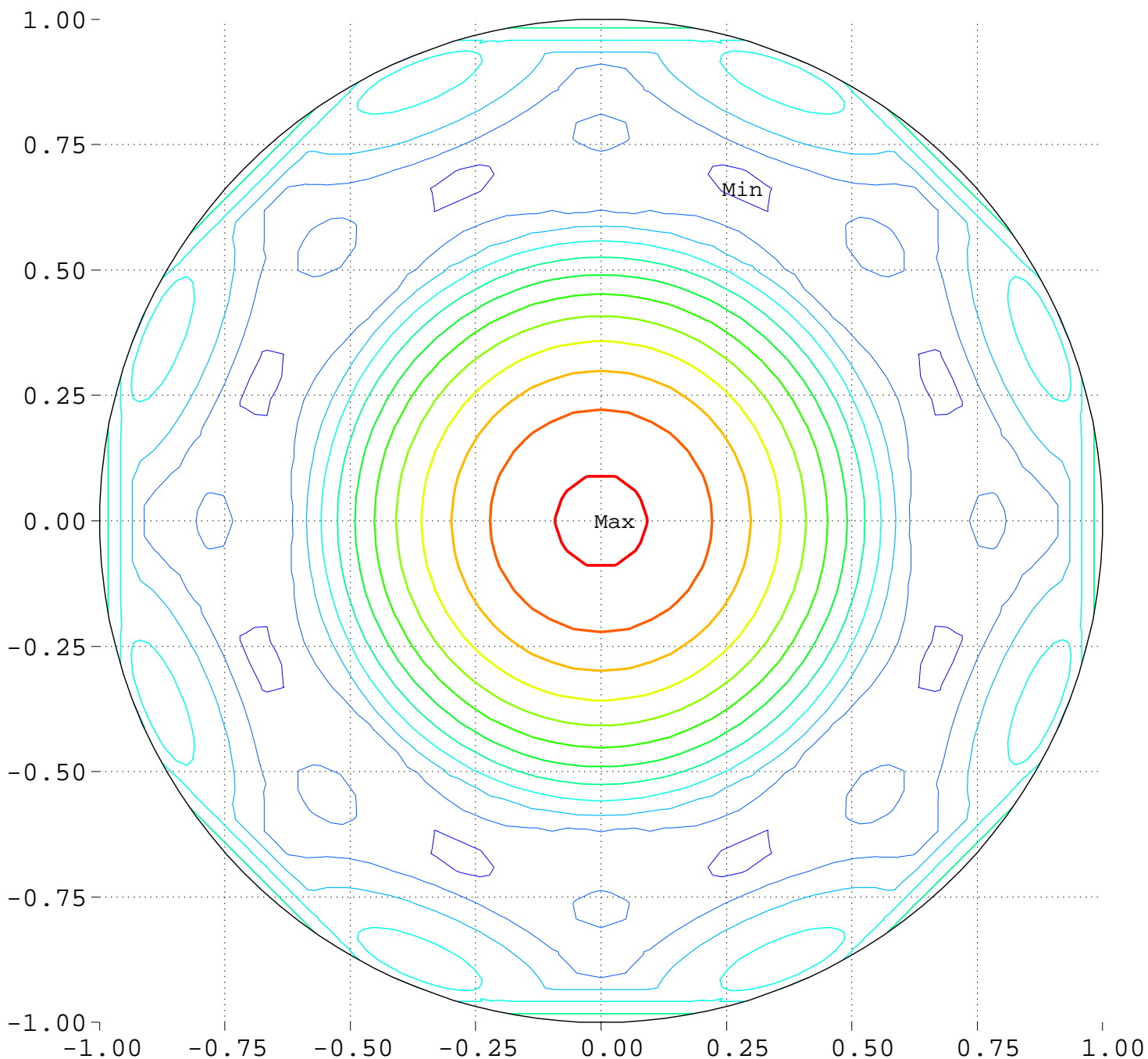
Contours around Nadirs of Sources



Maximize Minimum Intensity for 8 Sources

Lowest Intensity: 1.819992

South Pole, 0 Deg = Right, 270 Deg = Top



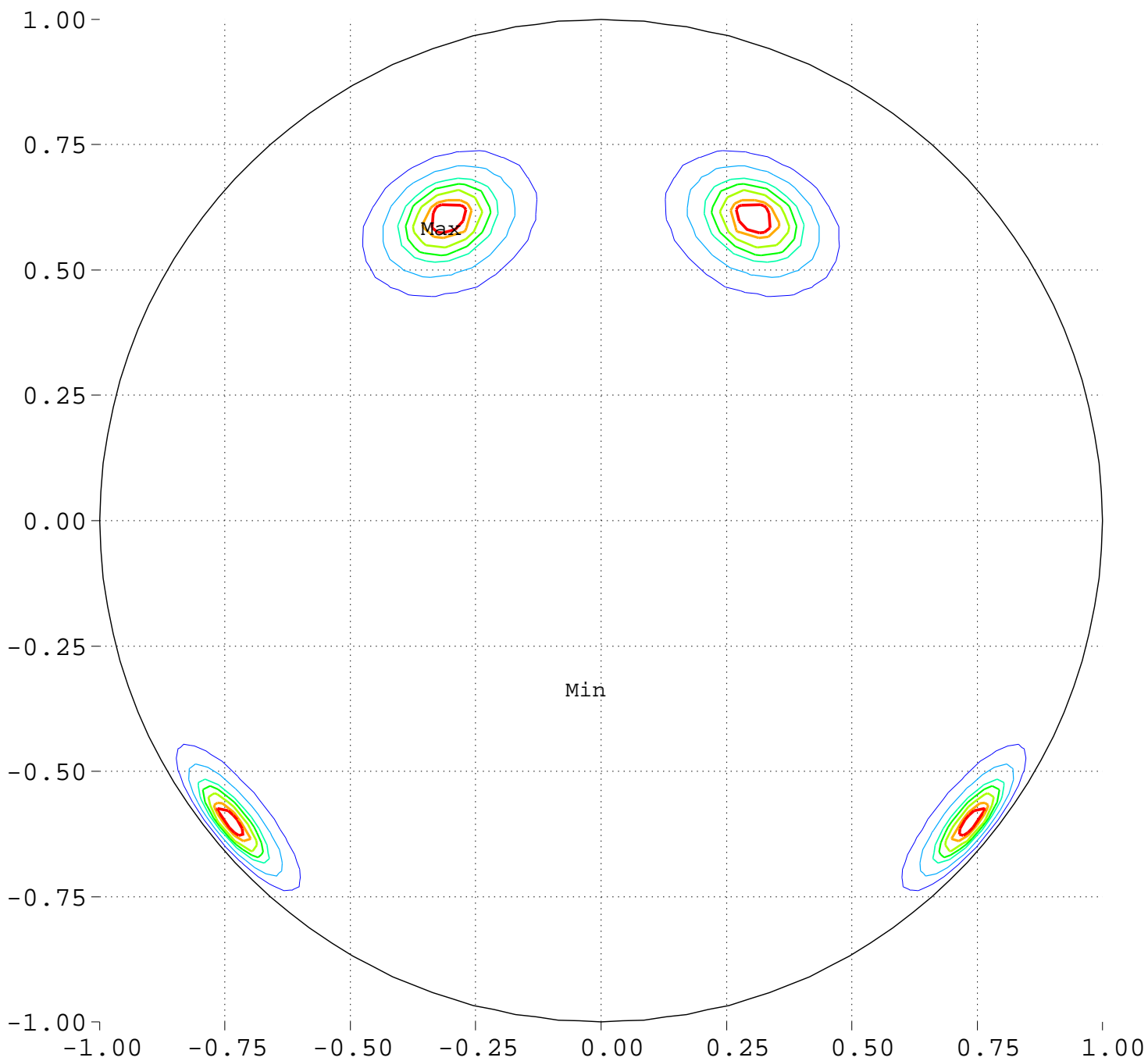
Minimum = 91.52 Maximum = 120.48

Contour Levels of Scaled Intensity

<u>92.5000</u>	<u>95.0000</u>	<u>97.5000</u>	<u>100.0000</u>	<u>102.5000</u>
<u>105.0000</u>	<u>107.5000</u>	<u>110.0000</u>	<u>112.5000</u>	<u>115.0000</u>
<u>117.5000</u>	<u>120.0000</u>			

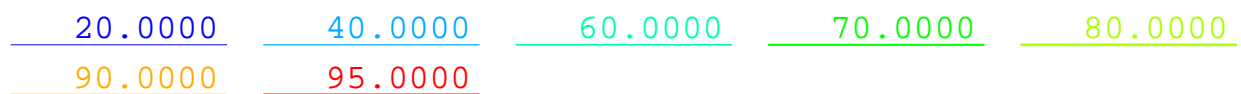
Maximize Minimum Intensity for 8 Sources Source Locations

Equator View, Longitude 0 Deg



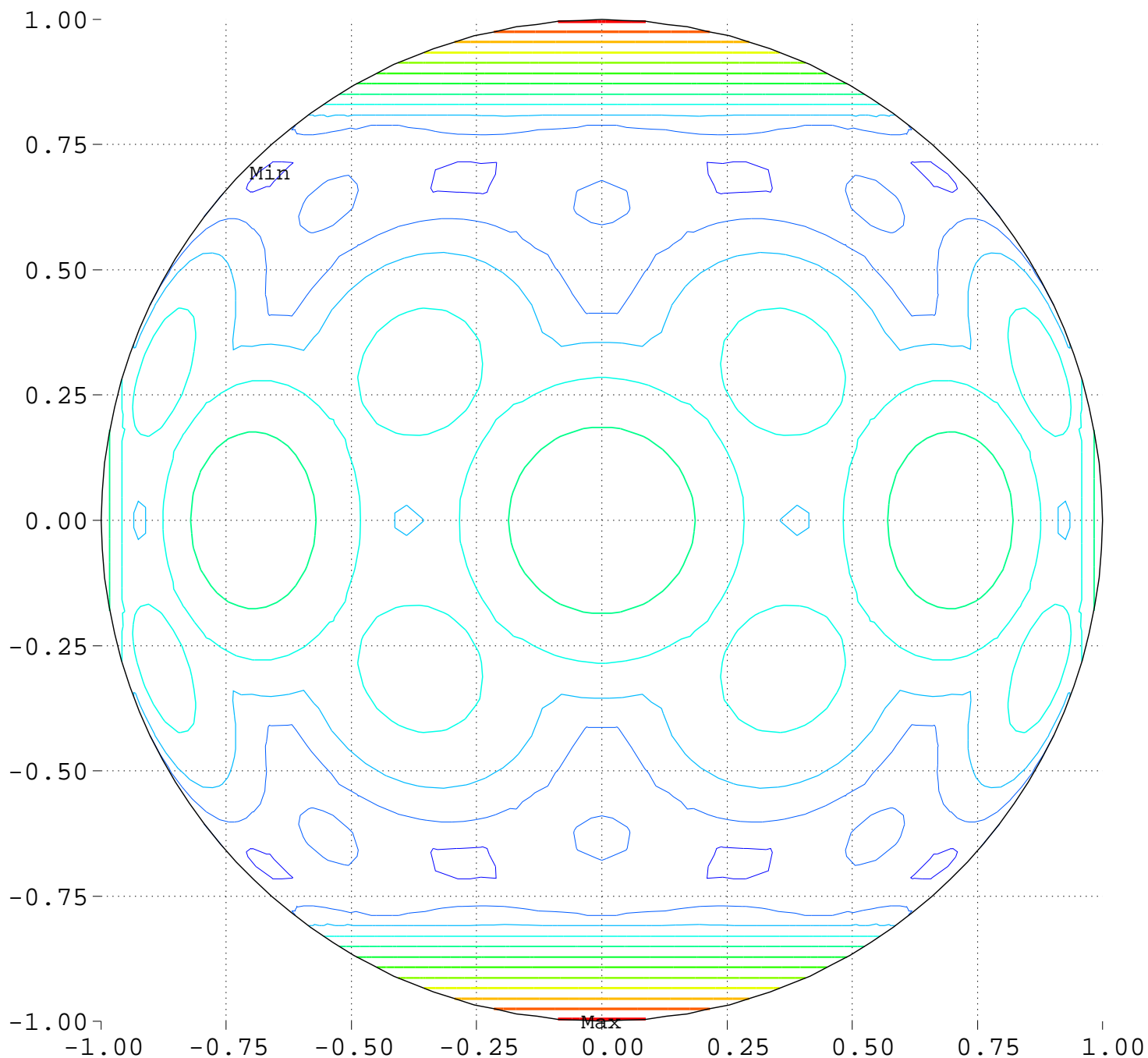
Minimum = 0.00 Maximum = 100.00

Contours around Nadirs of Sources



Maximize Minimum Intensity for 8 Sources
Lowest Intensity: 1.819992

Equator View, Longitude 0 Deg



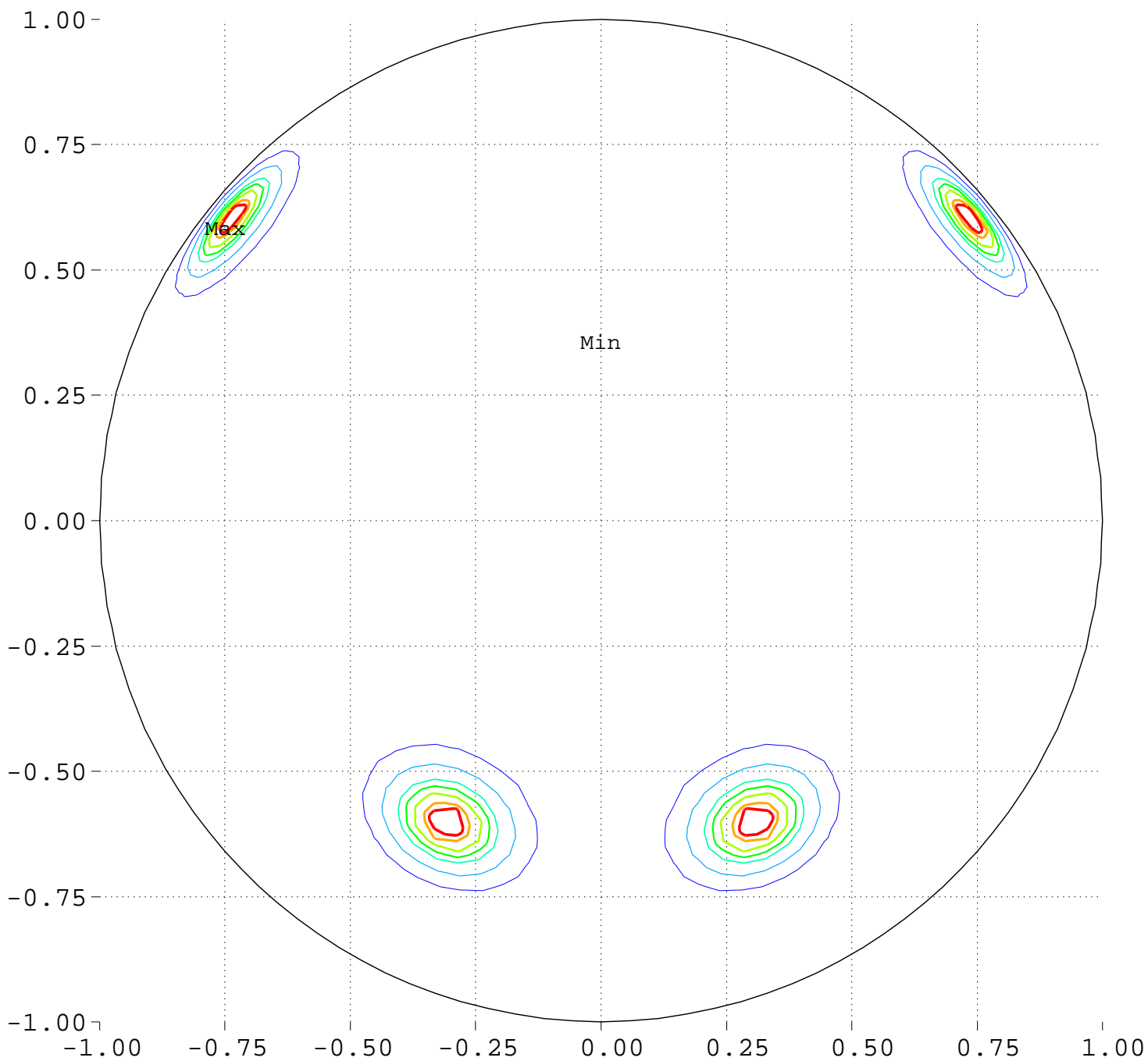
Minimum = 91.52 Maximum = 120.48

Contour Levels of Scaled Intensity

<u>92.5000</u>	<u>95.0000</u>	<u>97.5000</u>	<u>100.0000</u>	<u>102.5000</u>
<u>105.0000</u>	<u>107.5000</u>	<u>110.0000</u>	<u>112.5000</u>	<u>115.0000</u>
<u>117.5000</u>	<u>120.0000</u>			

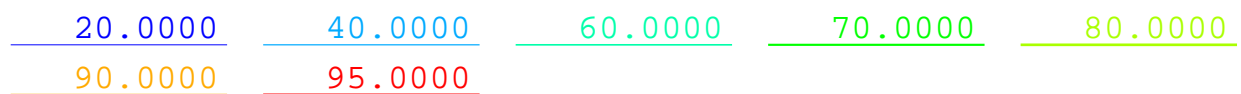
Maximize Minimum Intensity for 8 Sources Source Locations

Equator View, Longitude 90 Deg



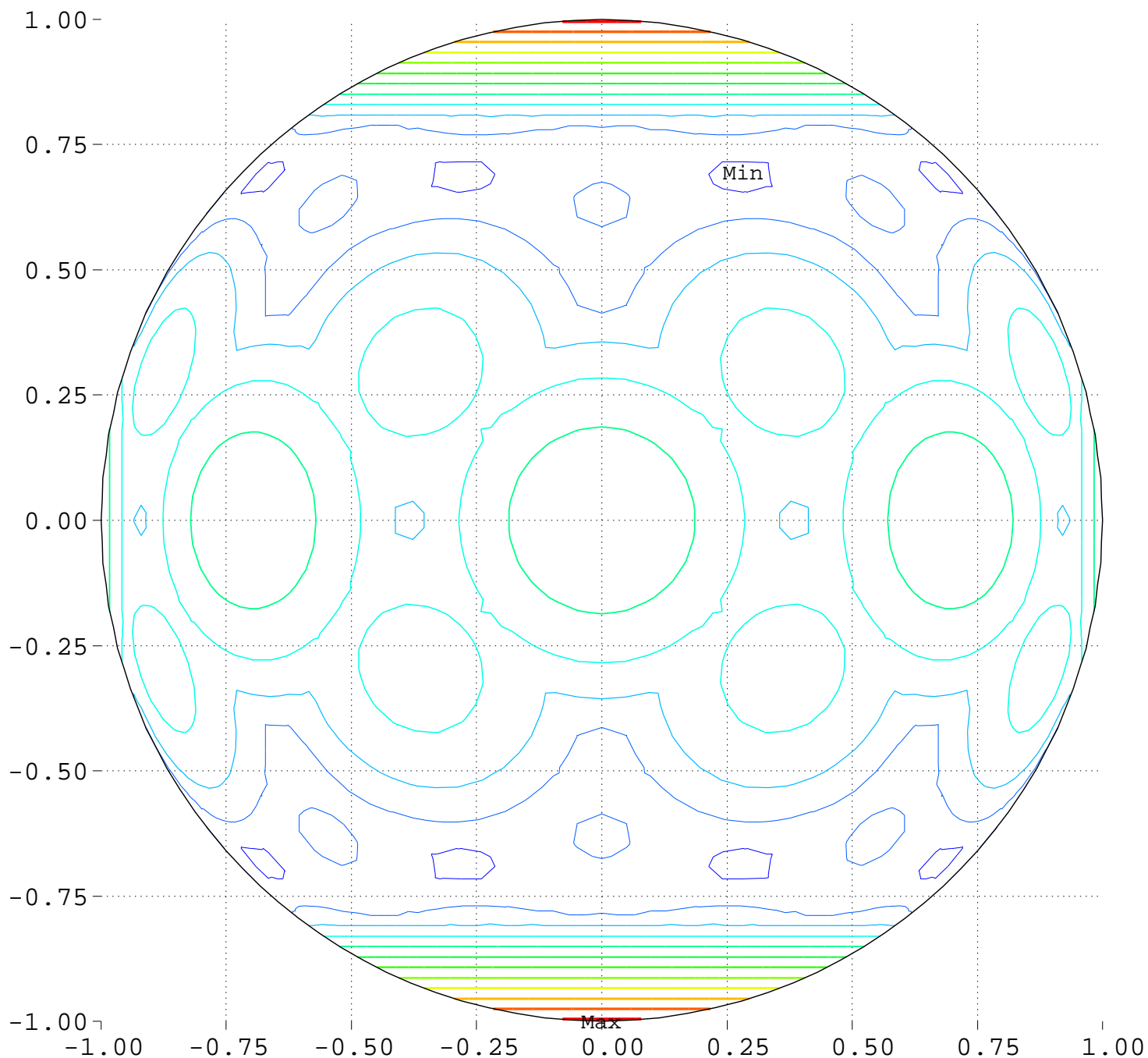
Minimum = 0.00 Maximum = 100.00

Contours around Nadirs of Sources



Maximize Minimum Intensity for 8 Sources
Lowest Intensity: 1.819992

Equator View, Longitude 90 Deg



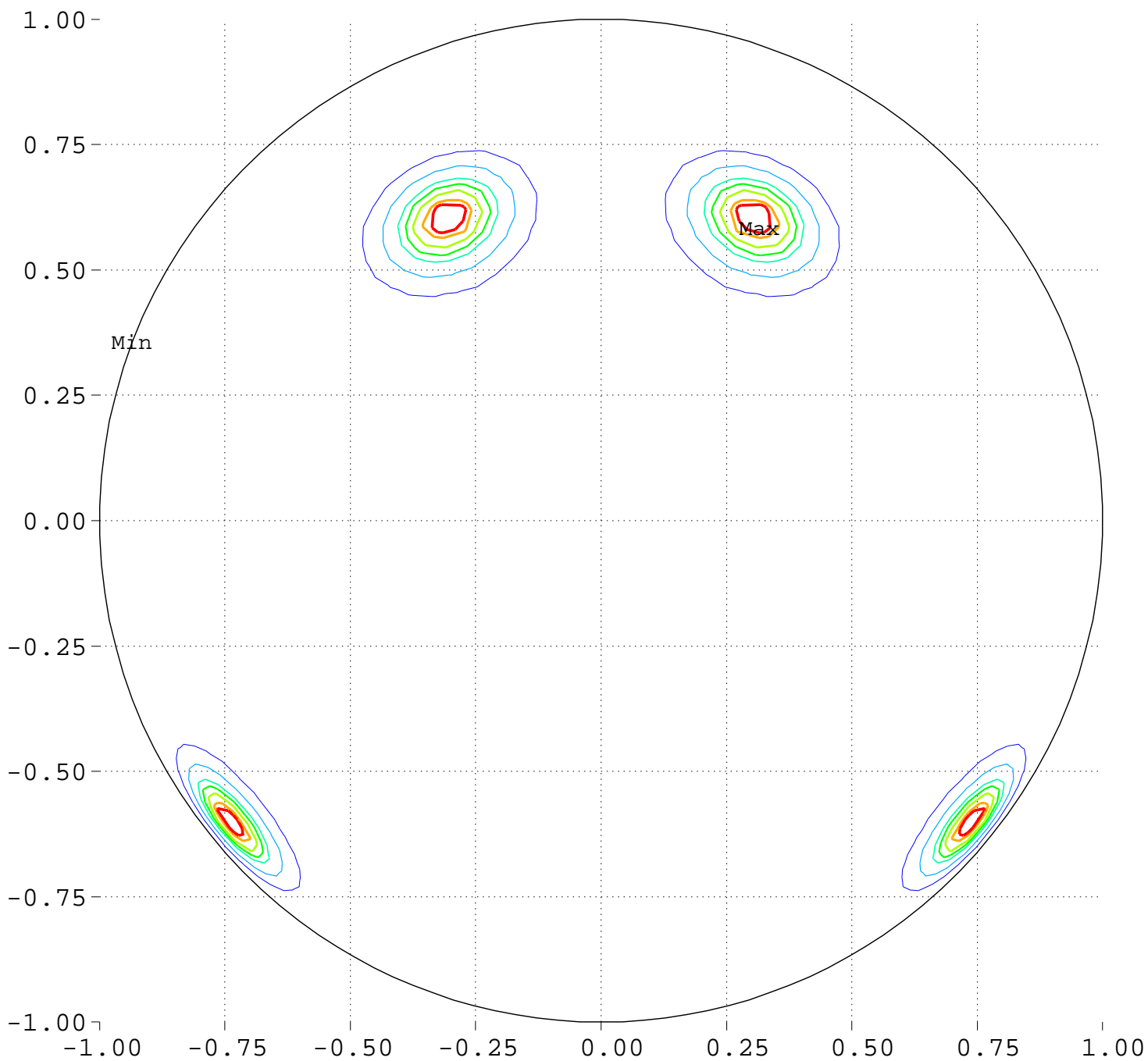
Minimum = 91.52 Maximum = 120.42

Contour Levels of Scaled Intensity

<u>92.5000</u>	<u>95.0000</u>	<u>97.5000</u>	<u>100.0000</u>	<u>102.5000</u>
<u>105.0000</u>	<u>107.5000</u>	<u>110.0000</u>	<u>112.5000</u>	<u>115.0000</u>
<u>117.5000</u>	<u>120.0000</u>			

Maximize Minimum Intensity for 8 Sources Source Locations

Equator View, Longitude 180 Deg



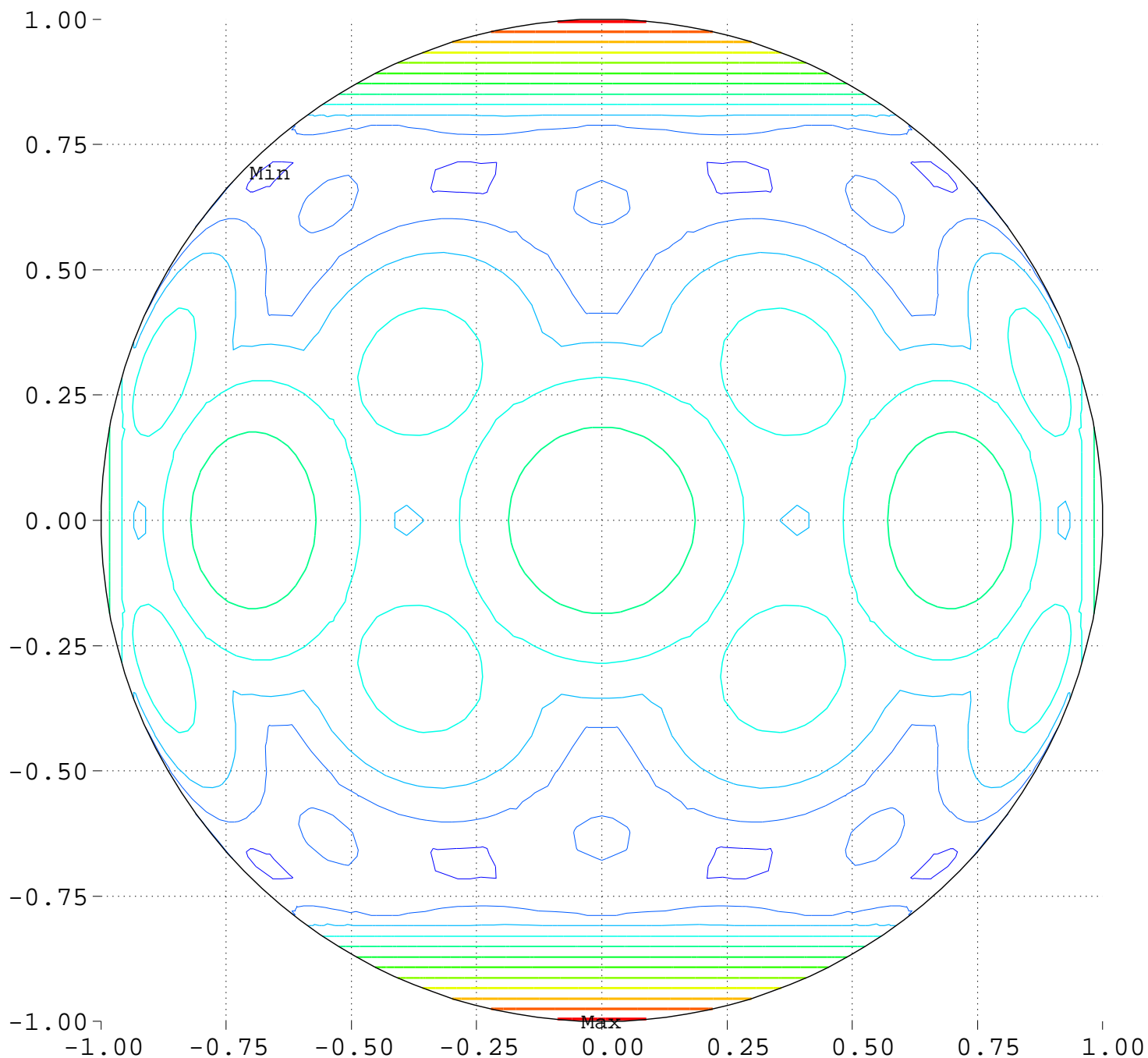
Minimum = 0.00 Maximum = 100.00

Contours around Nadirs of Sources



Maximize Minimum Intensity for 8 Sources
Lowest Intensity: 1.819992

Equator View, Longitude 180 Deg



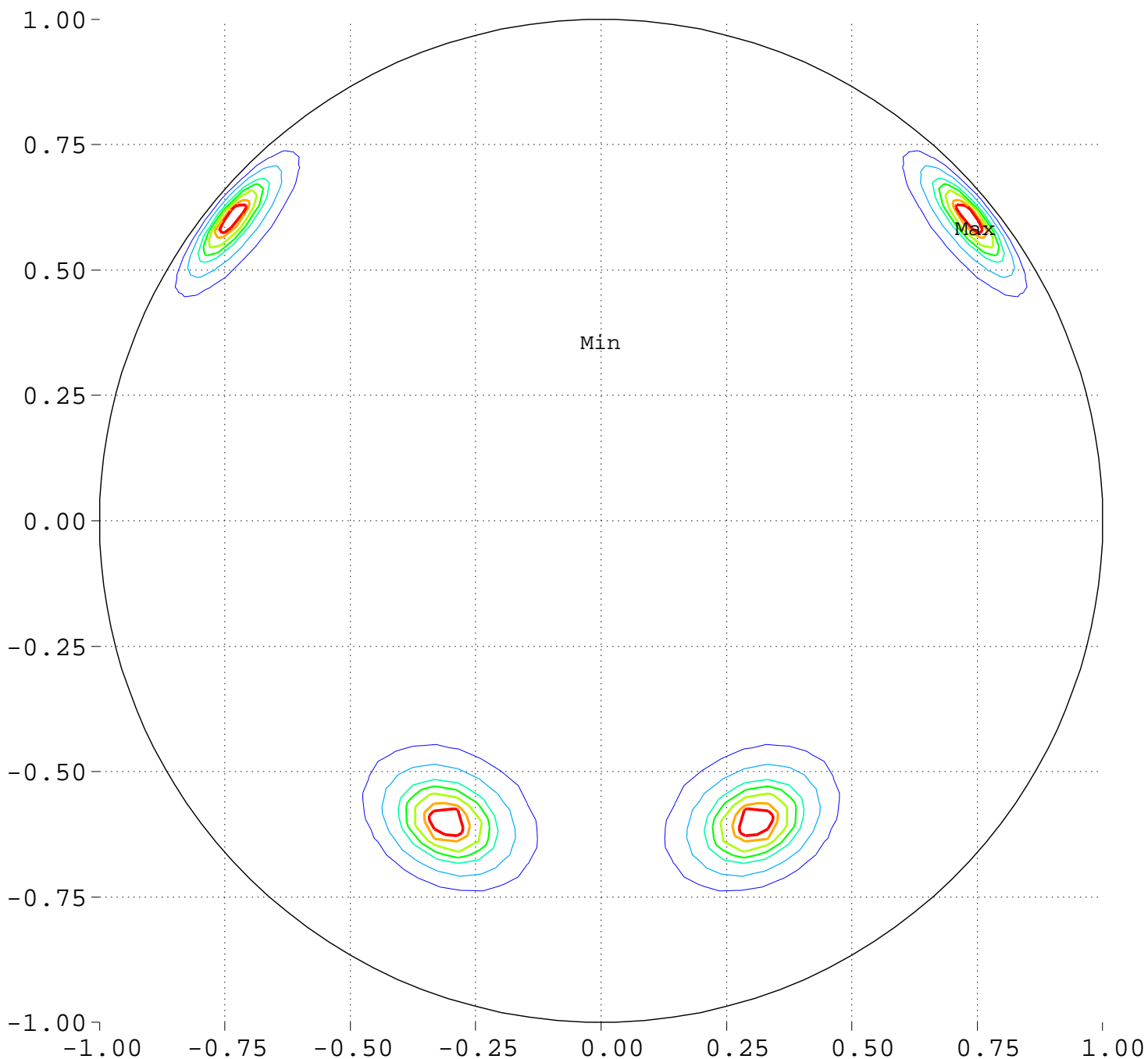
Minimum = 91.52 Maximum = 120.48

Contour Levels of Scaled Intensity

<u>92.5000</u>	<u>95.0000</u>	<u>97.5000</u>	<u>100.0000</u>	<u>102.5000</u>
<u>105.0000</u>	<u>107.5000</u>	<u>110.0000</u>	<u>112.5000</u>	<u>115.0000</u>
<u>117.5000</u>	<u>120.0000</u>			

Maximize Minimum Intensity for 8 Sources Source Locations

Equator View, Longitude 270 Deg



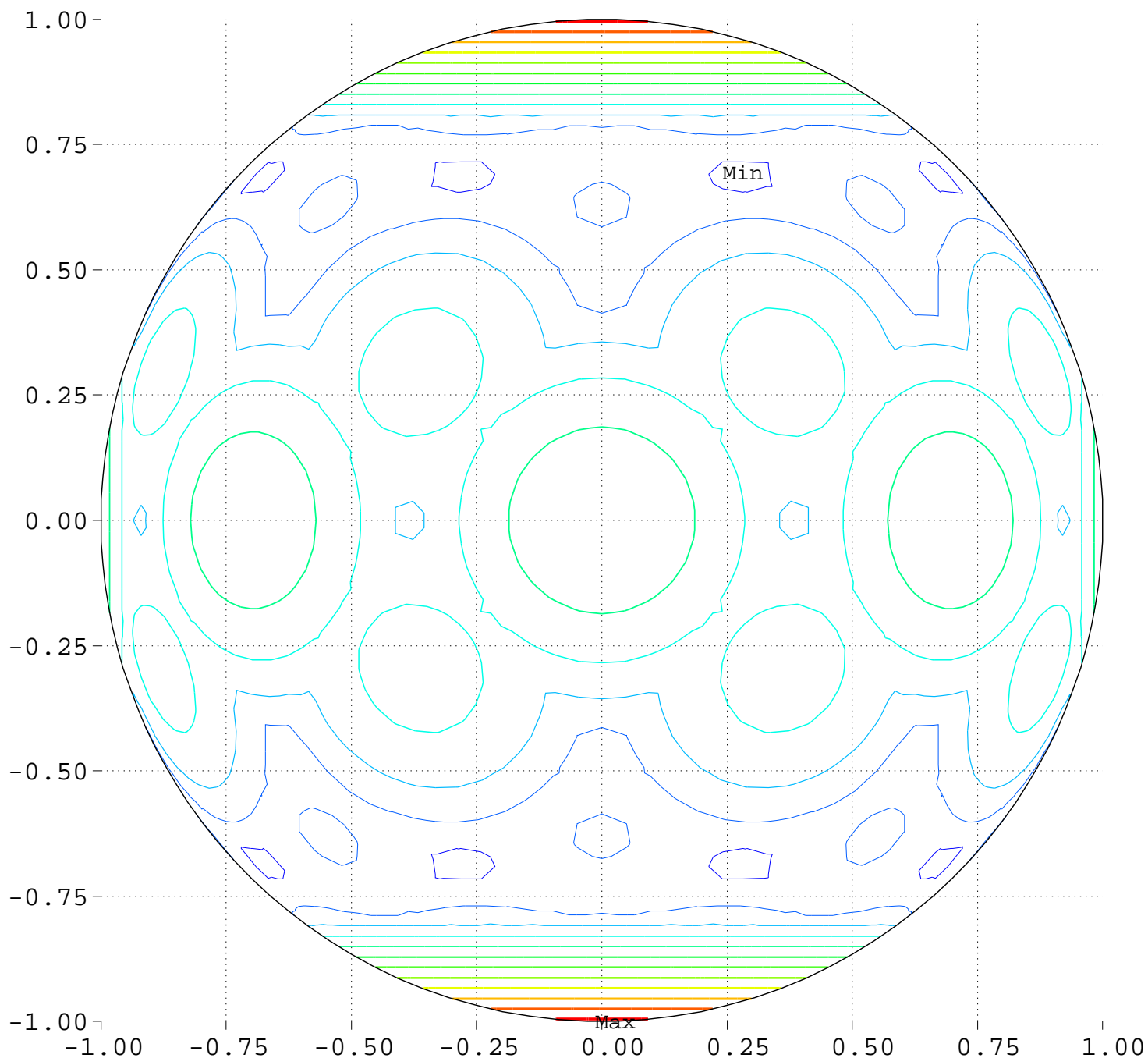
Minimum = 0.00 Maximum = 100.00

Contours around Nadirs of Sources



Maximize Minimum Intensity for 8 Sources
Lowest Intensity: 1.819992

Equator View, Longitude 270 Deg



Minimum = 91.52 Maximum = 120.48

Contour Levels of Scaled Intensity

<u>92.5000</u>	<u>95.0000</u>	<u>97.5000</u>	<u>100.0000</u>	<u>102.5000</u>
<u>105.0000</u>	<u>107.5000</u>	<u>110.0000</u>	<u>112.5000</u>	<u>115.0000</u>
<u>117.5000</u>	<u>120.0000</u>			