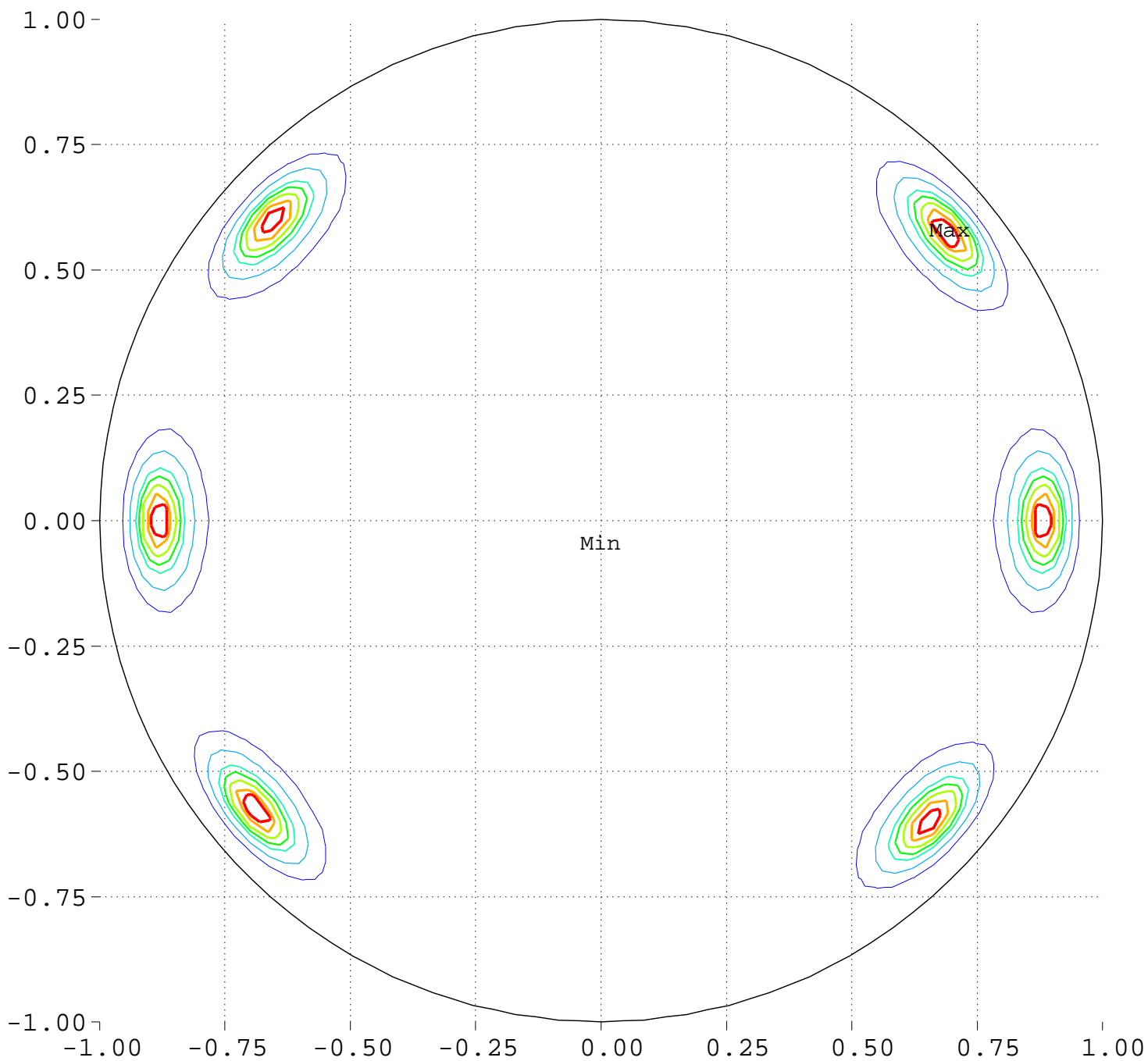


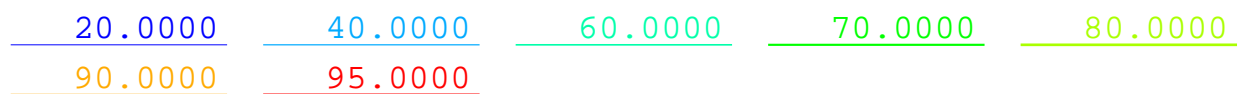
# Maximize Minimum Intensity for 10 Sources Source Locations

North Pole, 0 Deg = Right, 90 Deg = Top



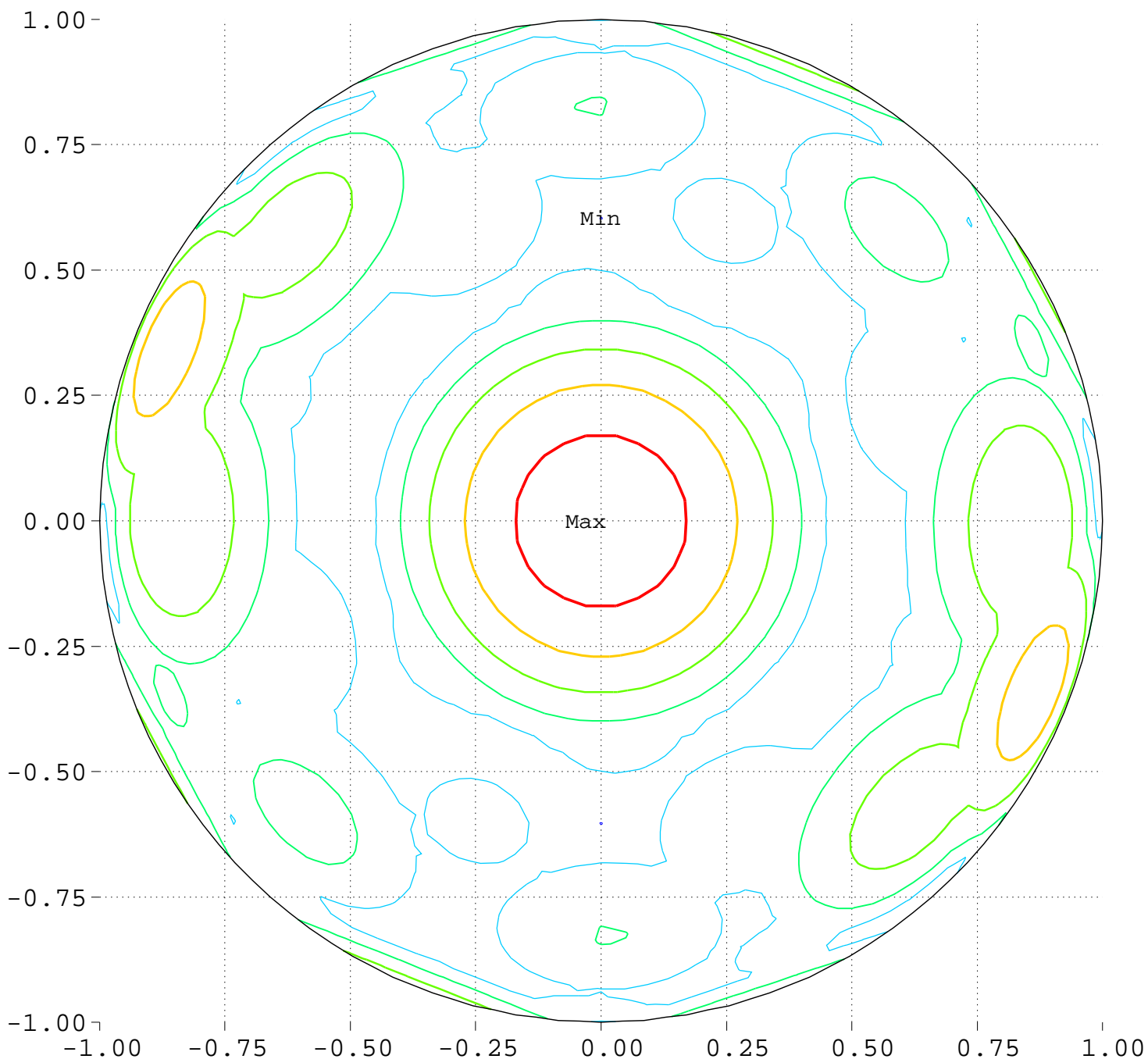
Minimum = 0.00      Maximum = 100.00

Contours around Nadirs of Sources



Maximize Minimum Intensity for 10 Sources  
Lowest Intensity: 2.371861

North Pole, 0 Deg = Right, 90 Deg = Top



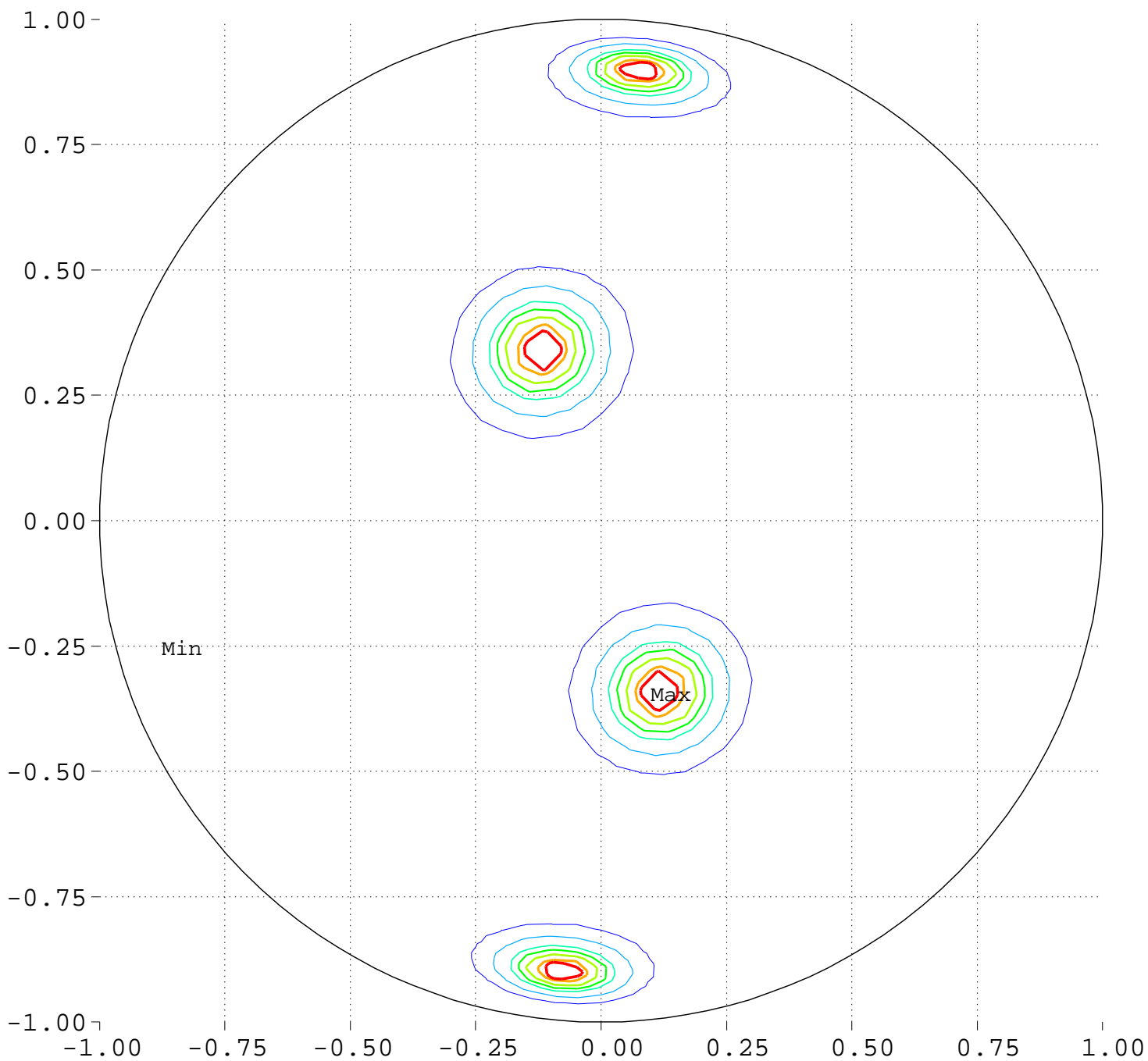
Minimum = 94.95      Maximum = 109.09

Contour Levels of Scaled Intensity

95.0000    97.5000    100.0000    102.5000    105.0000  
107.5000

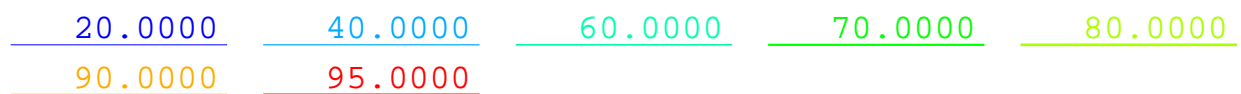
# Maximize Minimum Intensity for 10 Sources Source Locations

South Pole, 0 Deg = Right, 270 Deg = Top



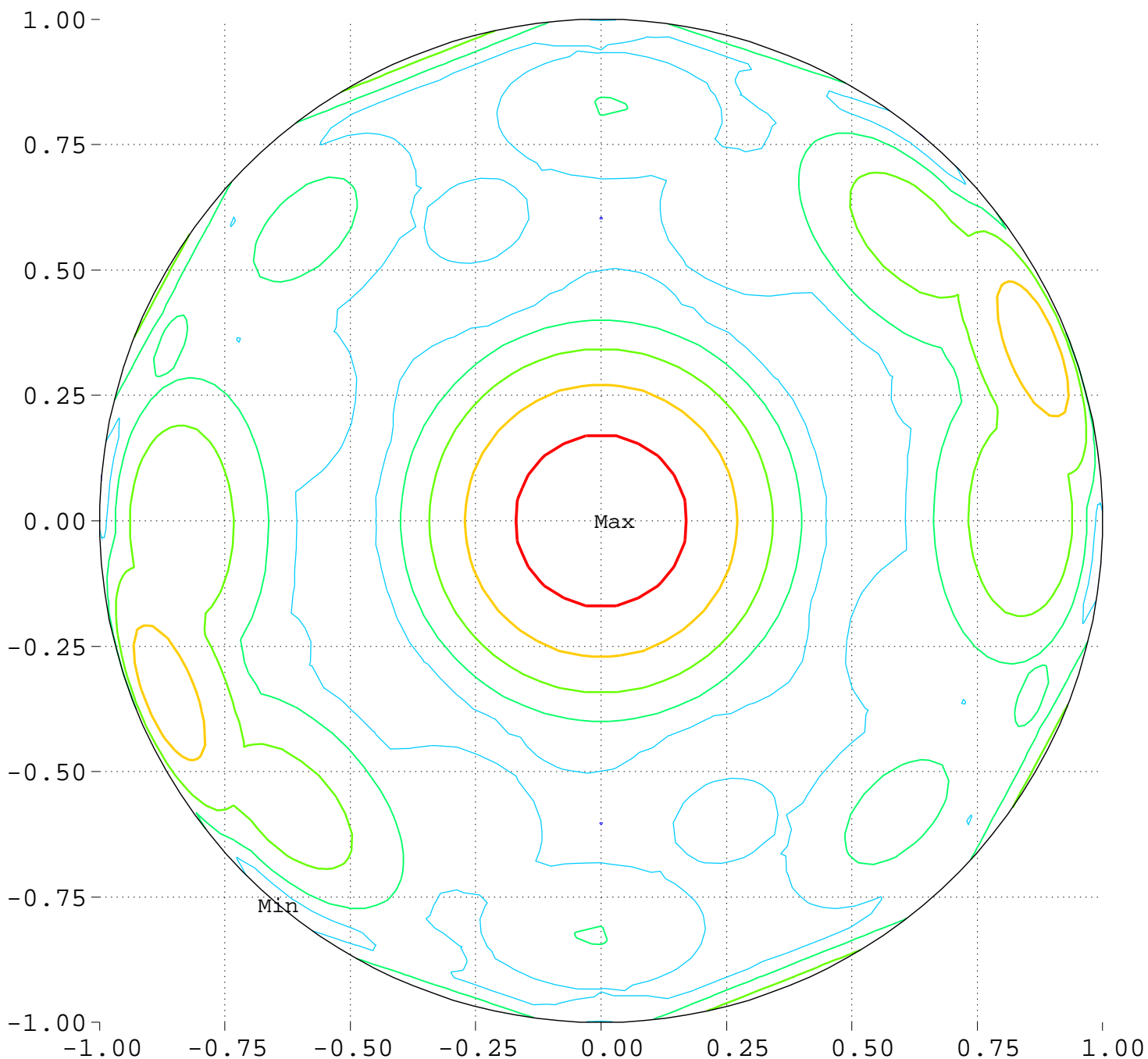
Minimum = 0.00      Maximum = 100.00

Contours around Nadirs of Sources



Maximize Minimum Intensity for 10 Sources  
Lowest Intensity: 2.371861

South Pole, 0 Deg = Right, 270 Deg = Top



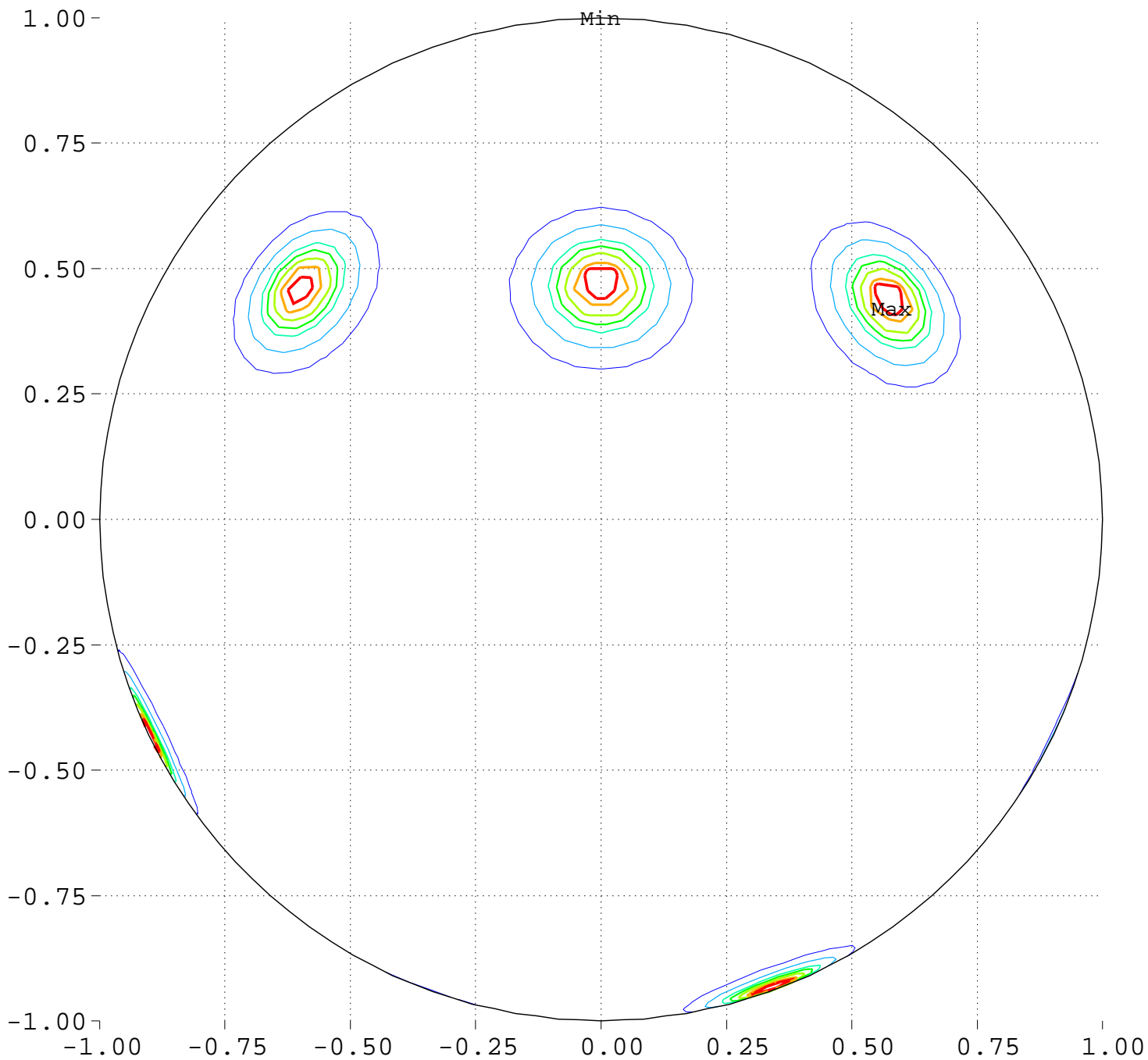
Minimum = 94.83      Maximum = 109.09

Contour Levels of Scaled Intensity

95.0000    97.5000    100.0000    102.5000    105.0000  
107.5000

# Maximize Minimum Intensity for 10 Sources Source Locations

Equator View, Longitude 0 Deg



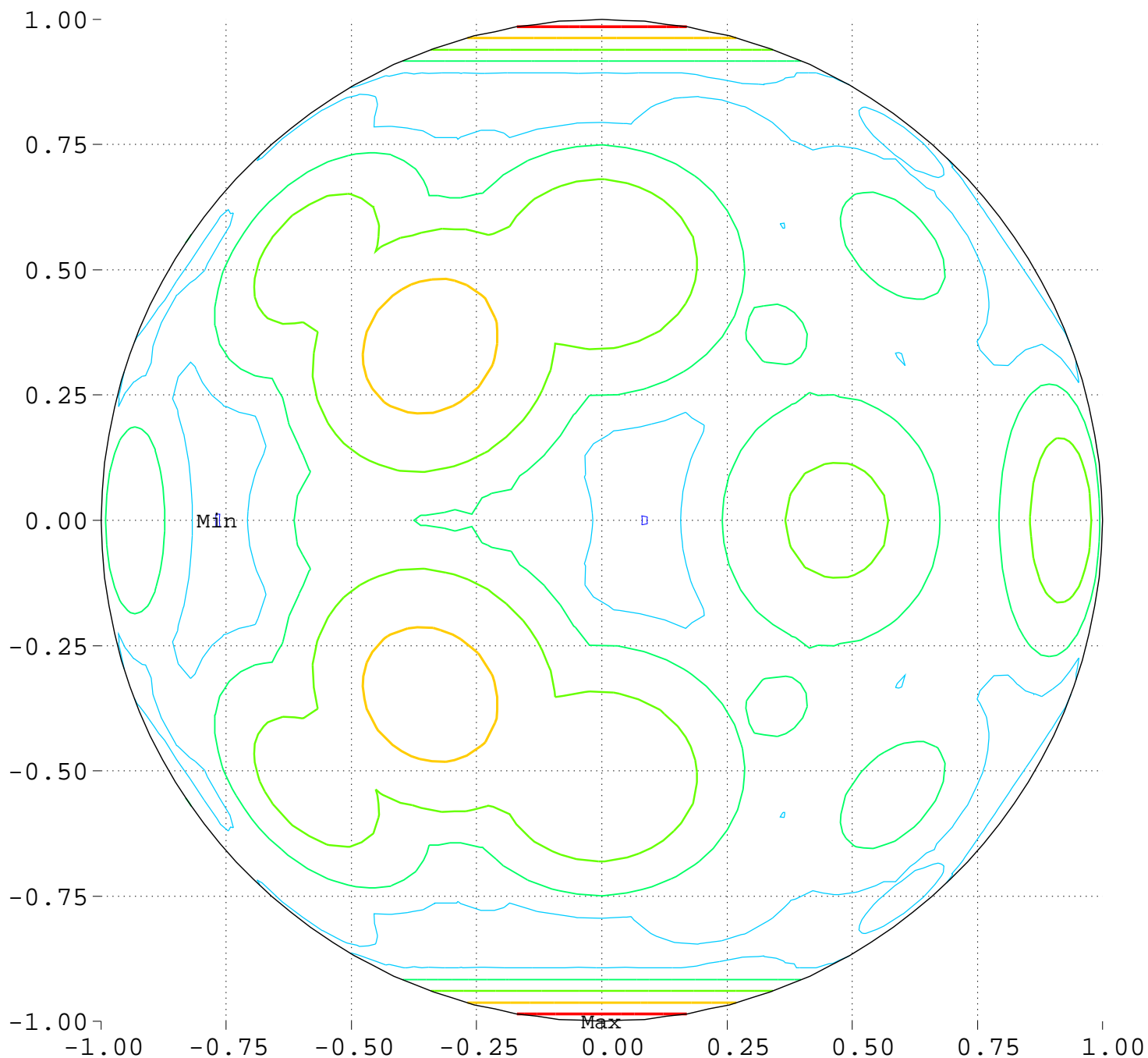
Minimum = 0.00      Maximum = 100.00

Contours around Nadirs of Sources

20.0000    40.0000    60.0000    70.0000    80.0000  
90.0000    95.0000

Maximize Minimum Intensity for 10 Sources  
Lowest Intensity: 2.371861

Equator View, Longitude 0 Deg



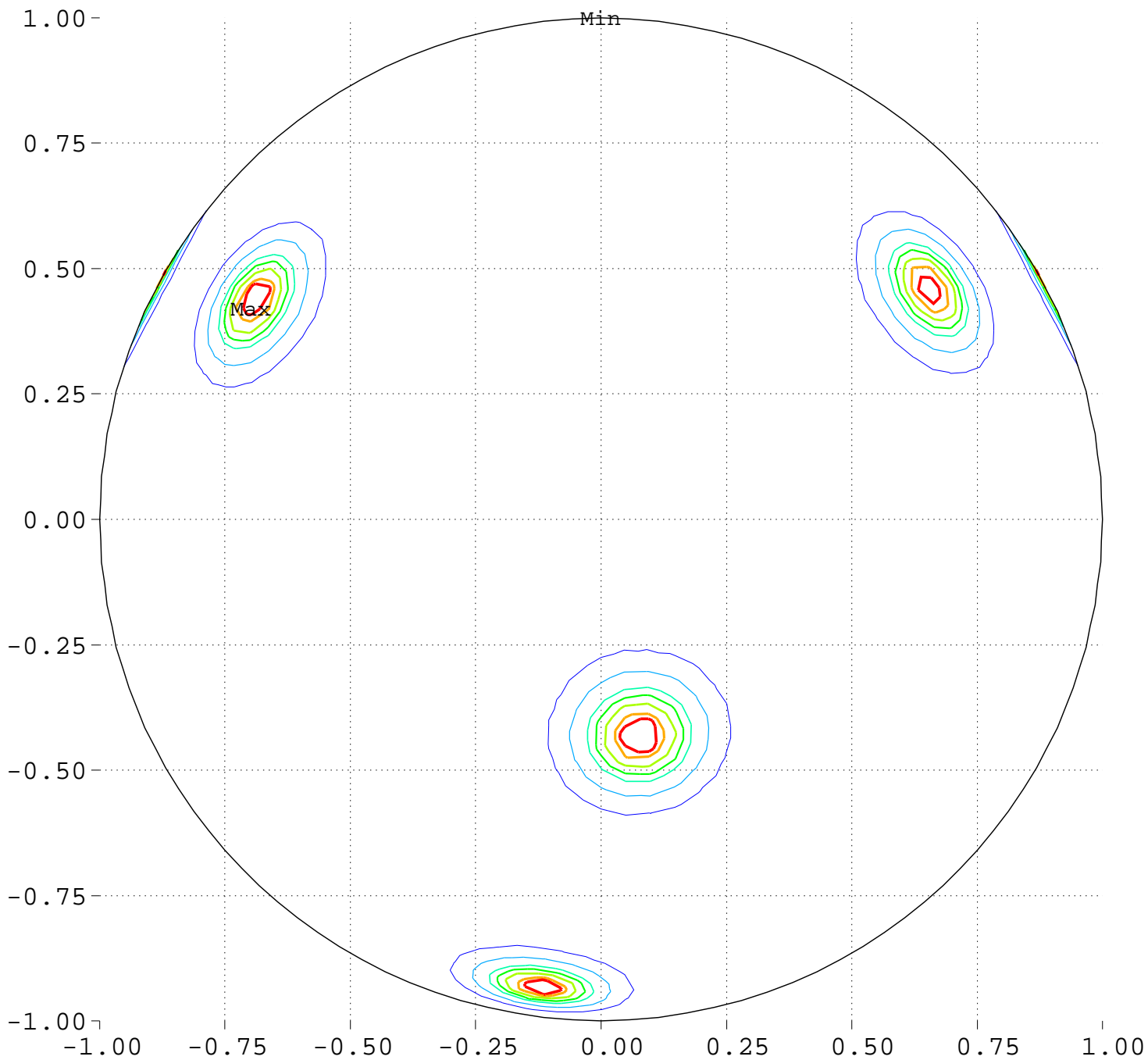
Minimum = 94.83      Maximum = 109.09

Contour Levels of Scaled Intensity

95.0000    97.5000    100.0000    102.5000    105.0000  
107.5000

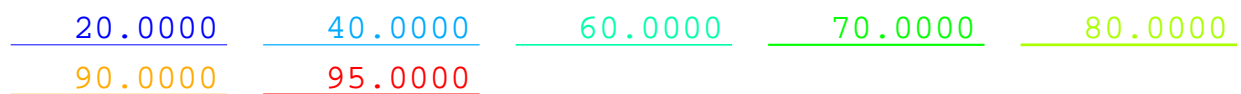
# Maximize Minimum Intensity for 10 Sources Source Locations

Equator View, Longitude 90 Deg



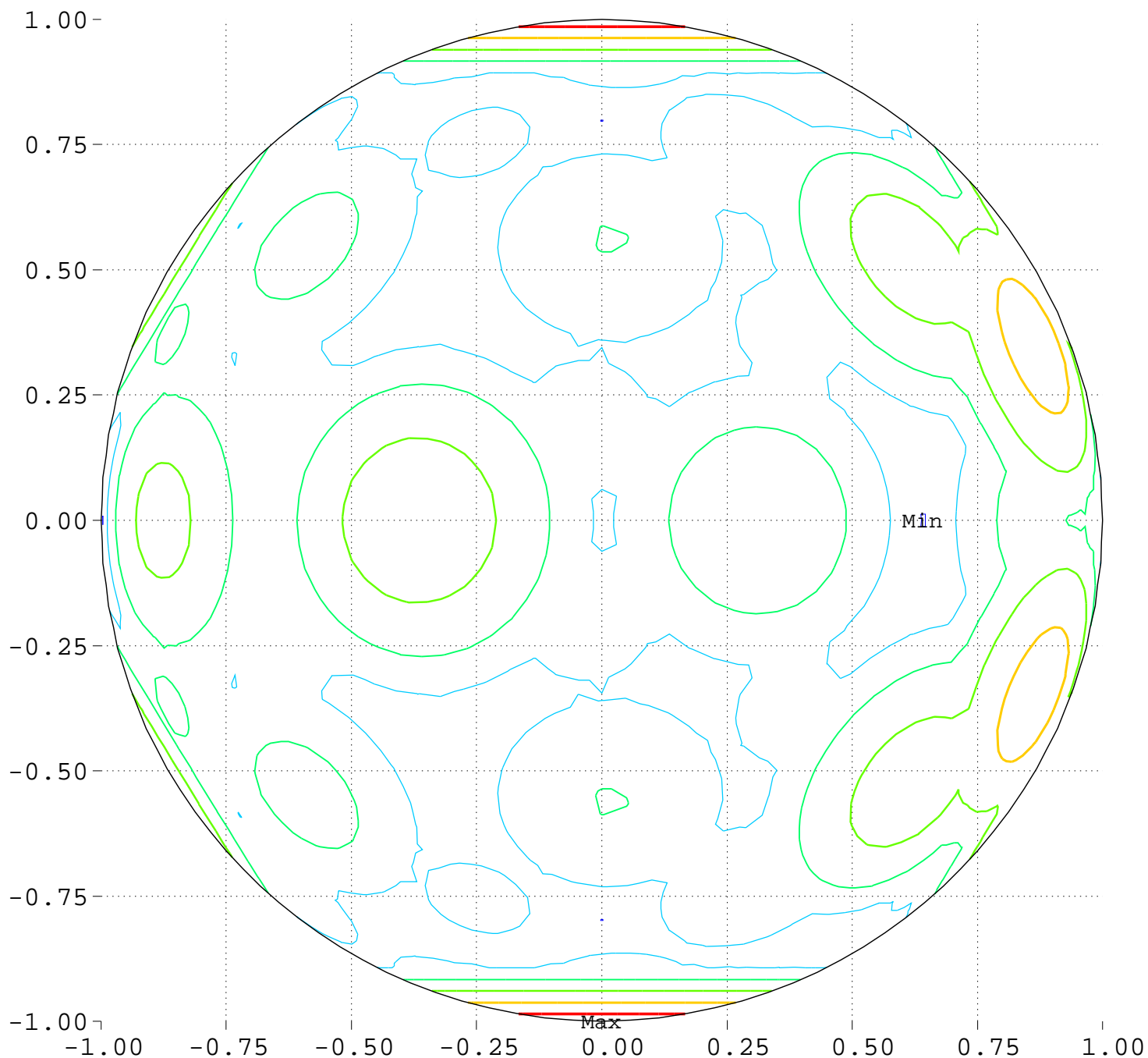
Minimum = 0.00      Maximum = 100.00

Contours around Nadirs of Sources



Maximize Minimum Intensity for 10 Sources  
Lowest Intensity: 2.371861

Equator View, Longitude 90 Deg



Minimum = 94.83      Maximum = 109.03

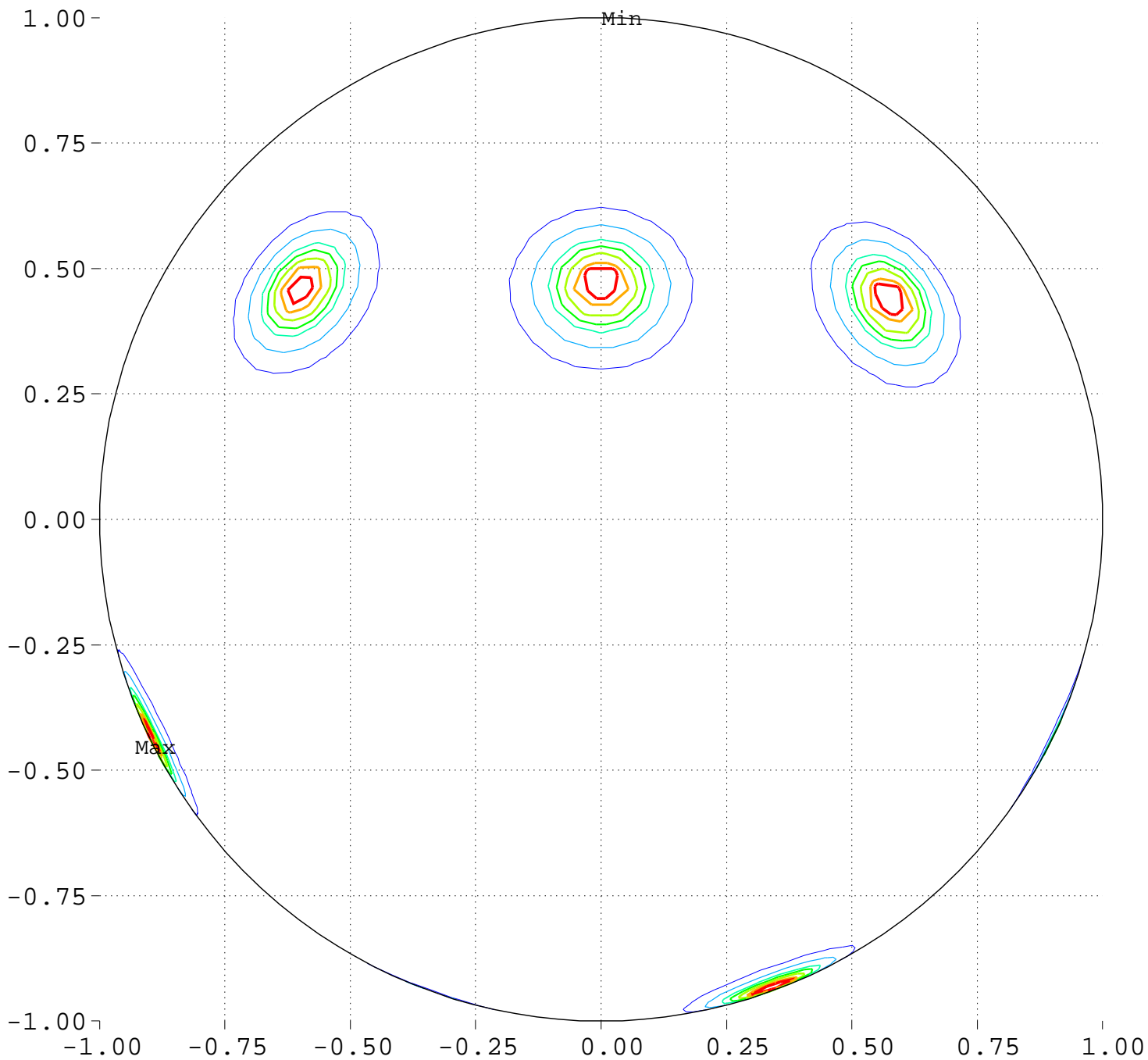
Contour Levels of Scaled Intensity

95.0000    97.5000    100.0000    102.5000    105.0000  
107.5000



# Maximize Minimum Intensity for 10 Sources Source Locations

Equator View, Longitude 180 Deg



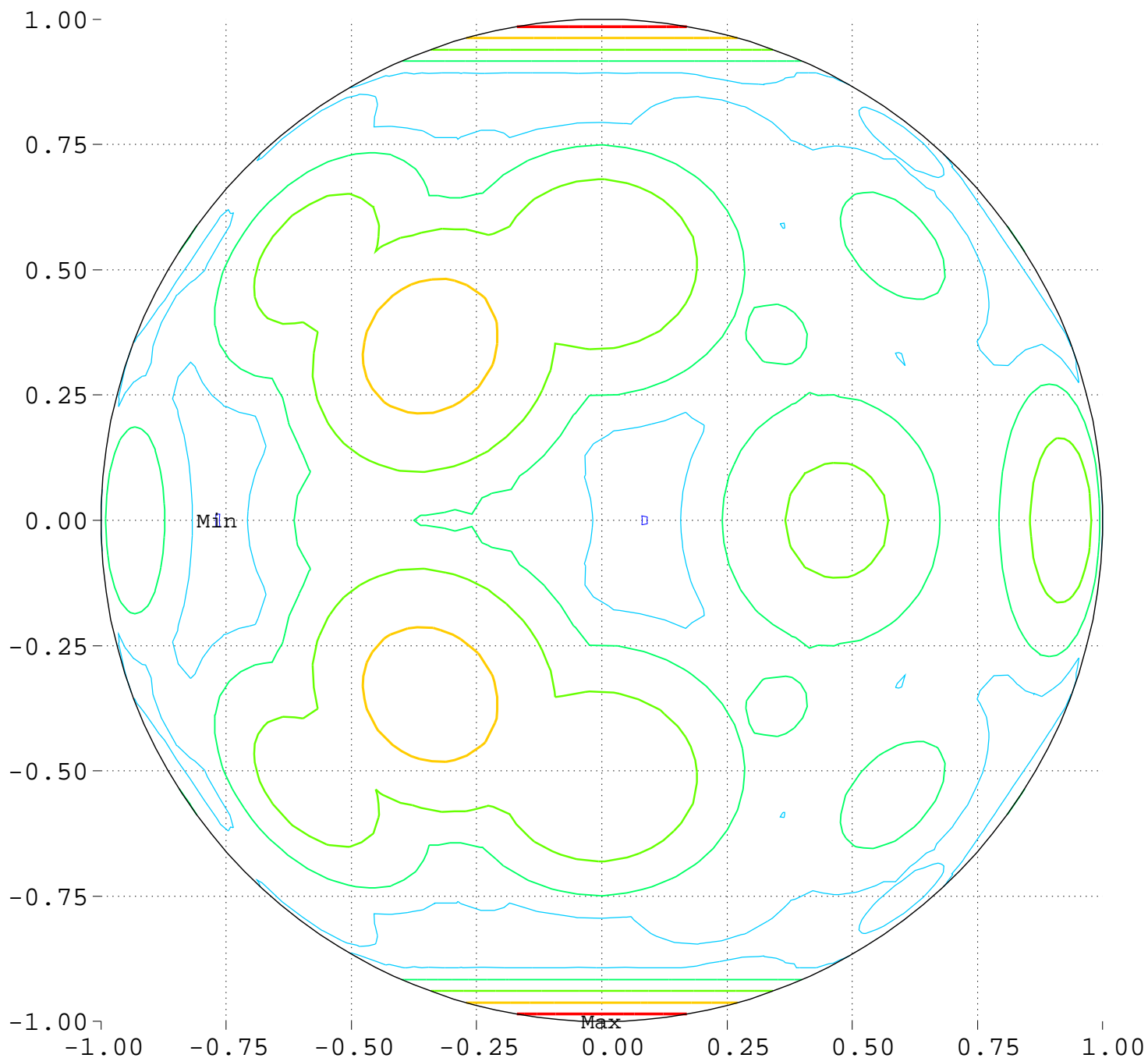
Minimum = 0.00      Maximum = 100.00

Contours around Nadirs of Sources

20.0000    40.0000    60.0000    70.0000    80.0000  
90.0000    95.0000

Maximize Minimum Intensity for 10 Sources  
Lowest Intensity: 2.371861

Equator View, Longitude 180 Deg



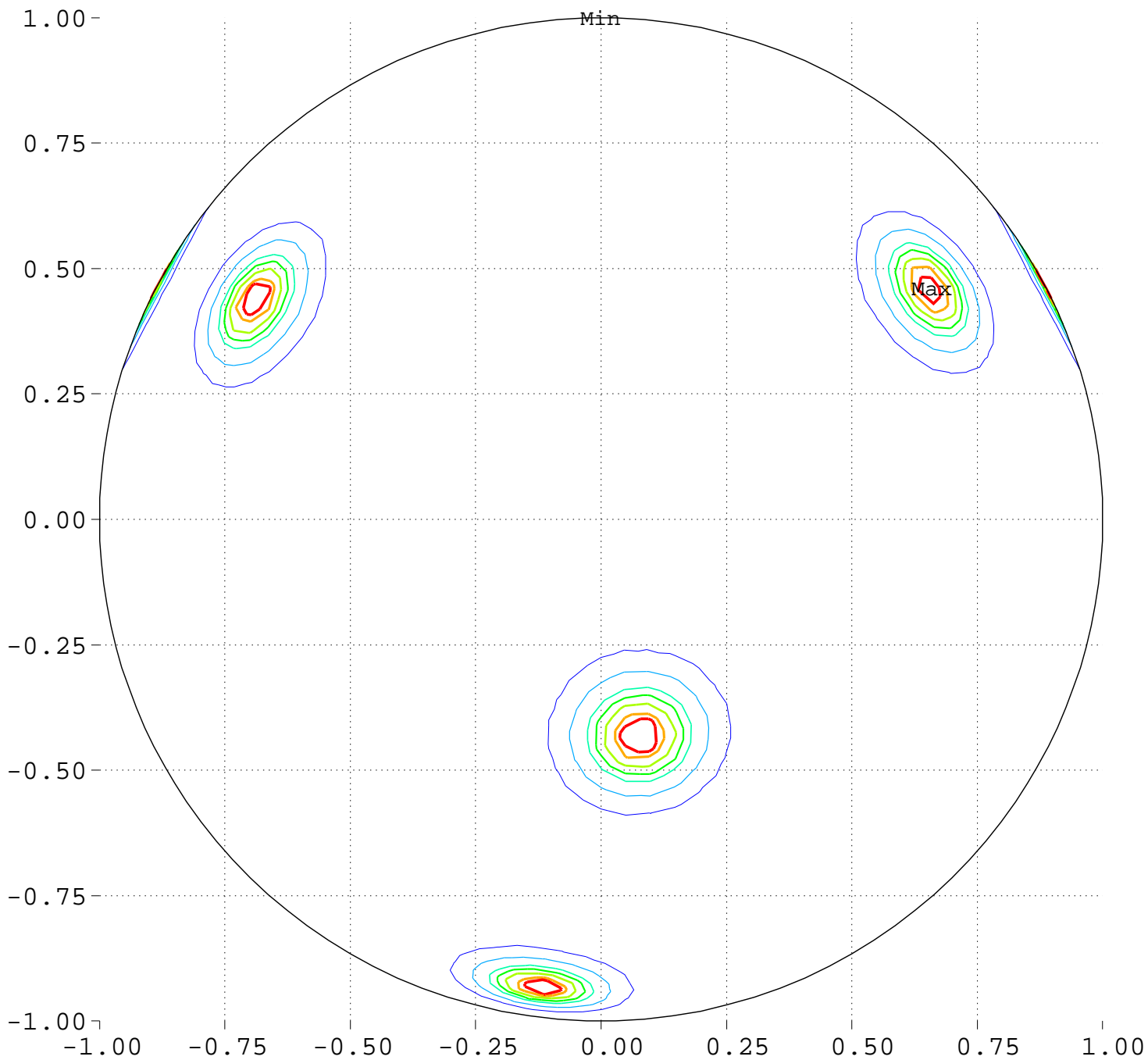
Minimum = 94.83      Maximum = 109.09

Contour Levels of Scaled Intensity

95.0000    97.5000    100.0000    102.5000    105.0000  
107.5000

# Maximize Minimum Intensity for 10 Sources Source Locations

Equator View, Longitude 270 Deg



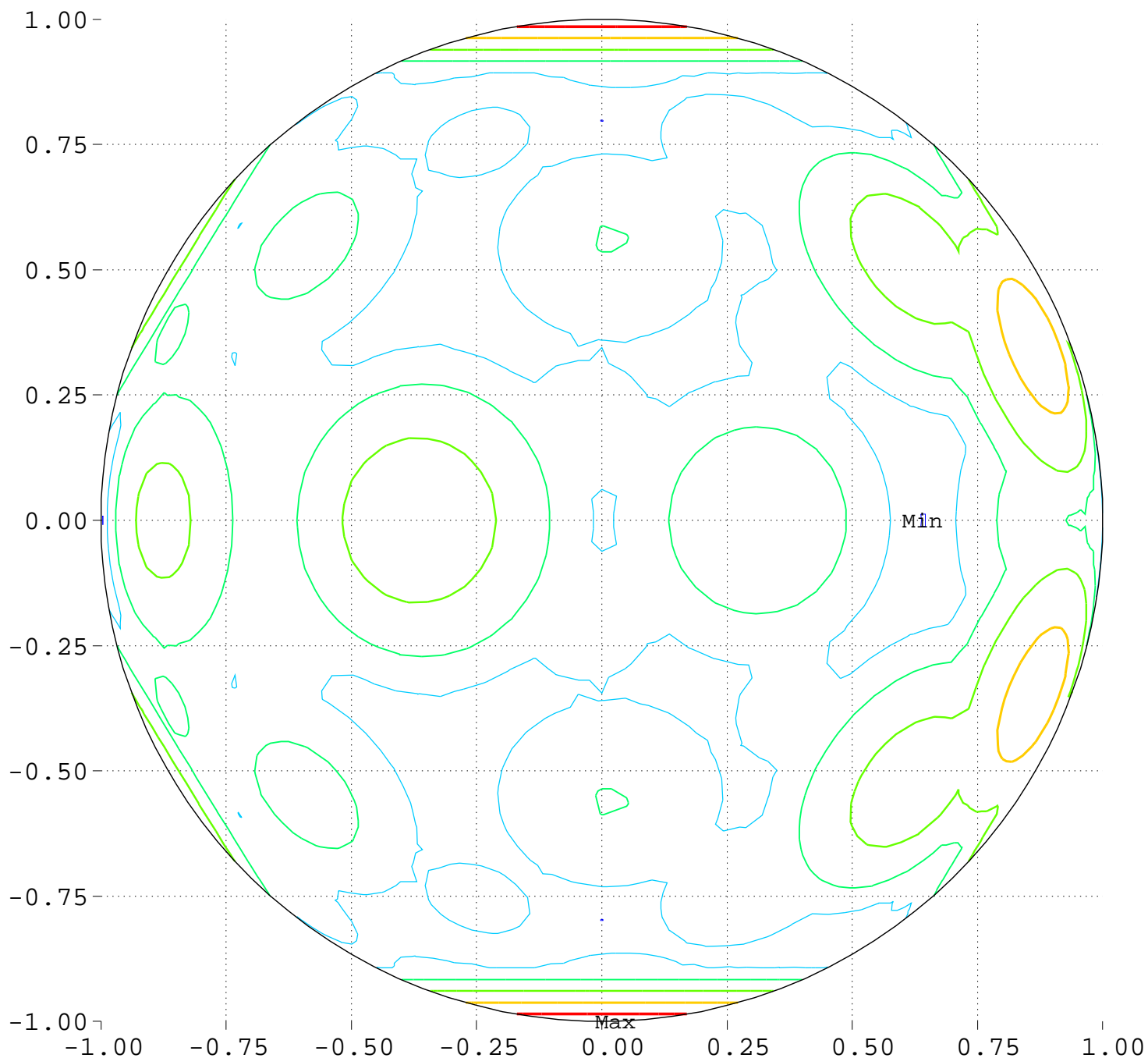
Minimum = 0.00      Maximum = 100.00

Contours around Nadirs of Sources

20.0000    40.0000    60.0000    70.0000    80.0000  
90.0000    95.0000

Maximize Minimum Intensity for 10 Sources  
Lowest Intensity: 2.371861

Equator View, Longitude 270 Deg



Minimum = 94.83      Maximum = 109.09

Contour Levels of Scaled Intensity

95.0000    97.5000    100.0000    102.5000    105.0000  
107.5000