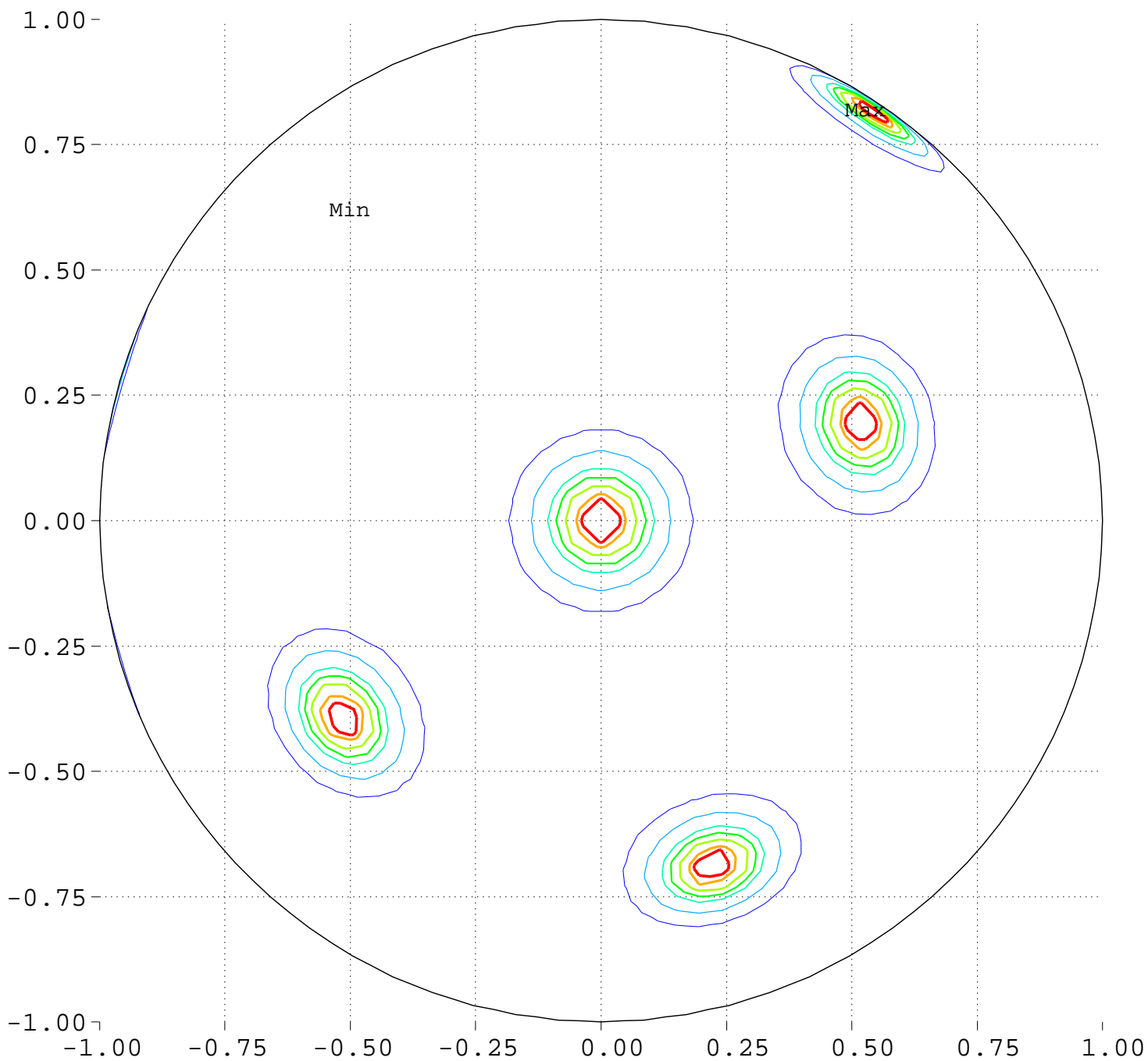


# Maximize Minimum Intensity for 14 Sources Source Locations

North Pole, 0 Deg = Right, 90 Deg = Top



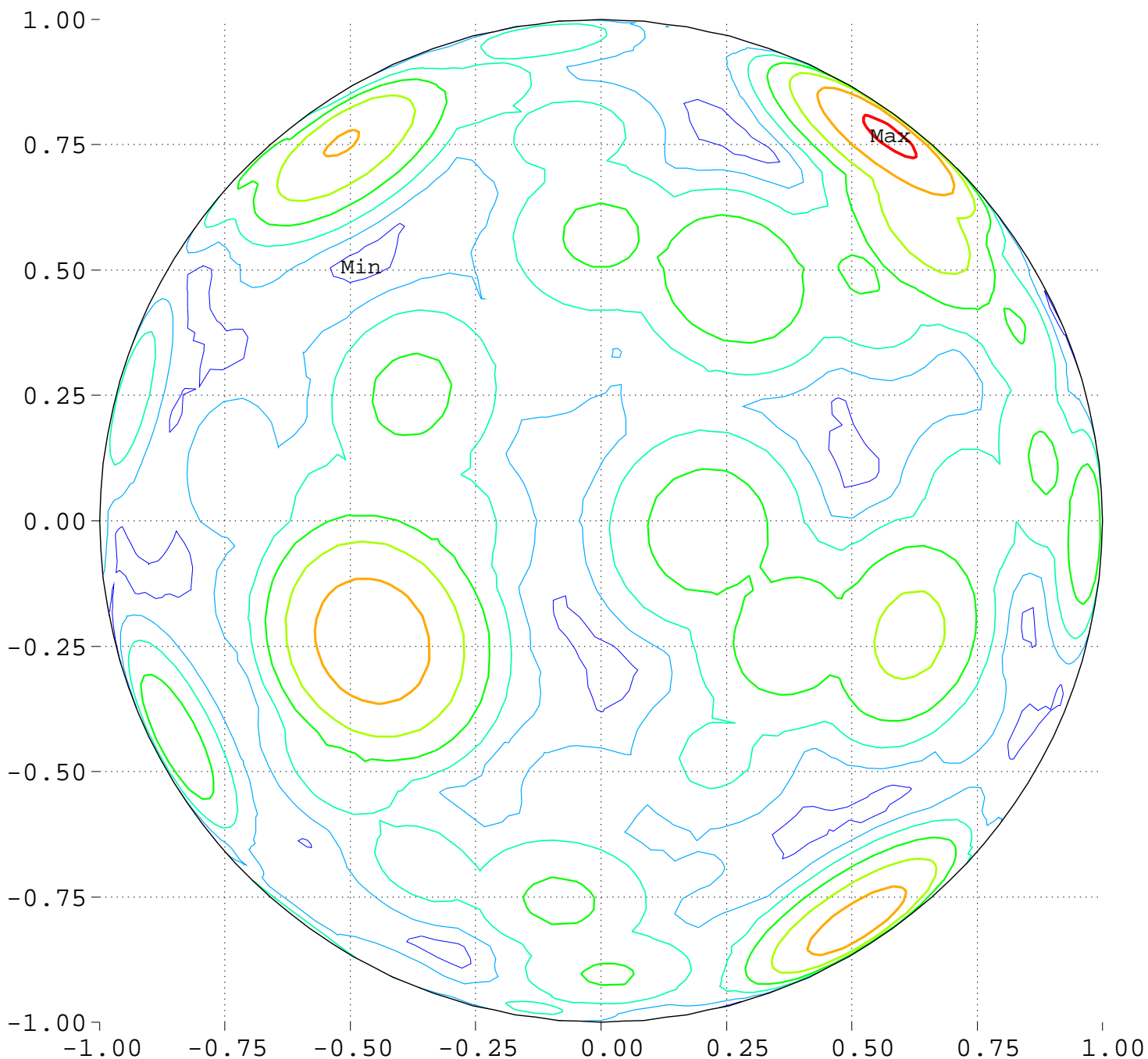
Minimum = 0.00      Maximum = 100.00

Contours around Nadirs of Sources



Maximize Minimum Intensity for 14 Sources  
Lowest Intensity: 3.384472

North Pole, 0 Deg = Right, 90 Deg = Top



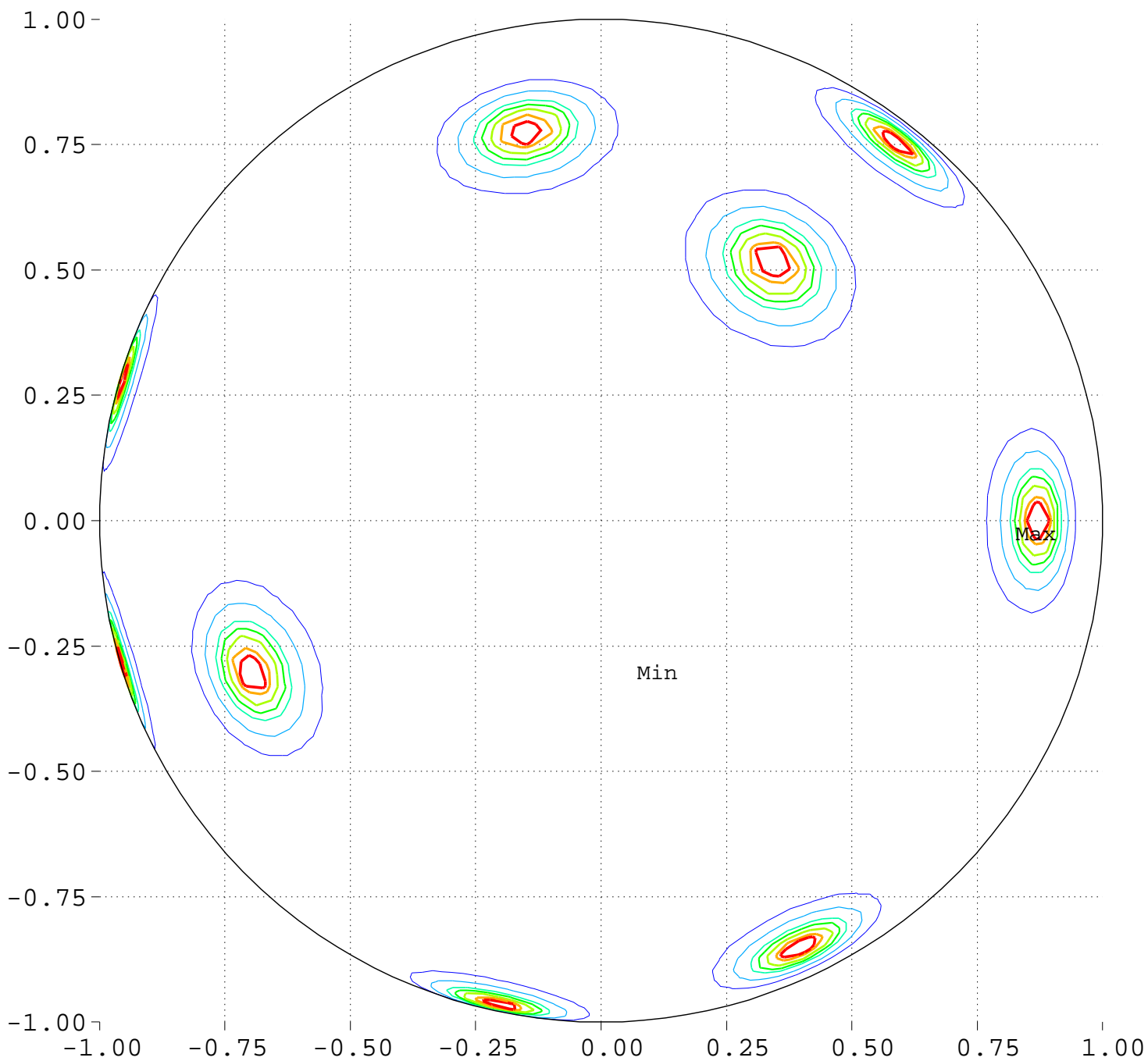
Minimum = 96.83      Maximum = 105.25

Contour Levels of Scaled Intensity

<u>97.5000</u>	<u>98.7500</u>	<u>100.0000</u>	<u>101.2500</u>	<u>102.5000</u>
<u>103.7500</u>	<u>105.0000</u>			

# Maximize Minimum Intensity for 14 Sources Source Locations

South Pole, 0 Deg = Right, 270 Deg = Top



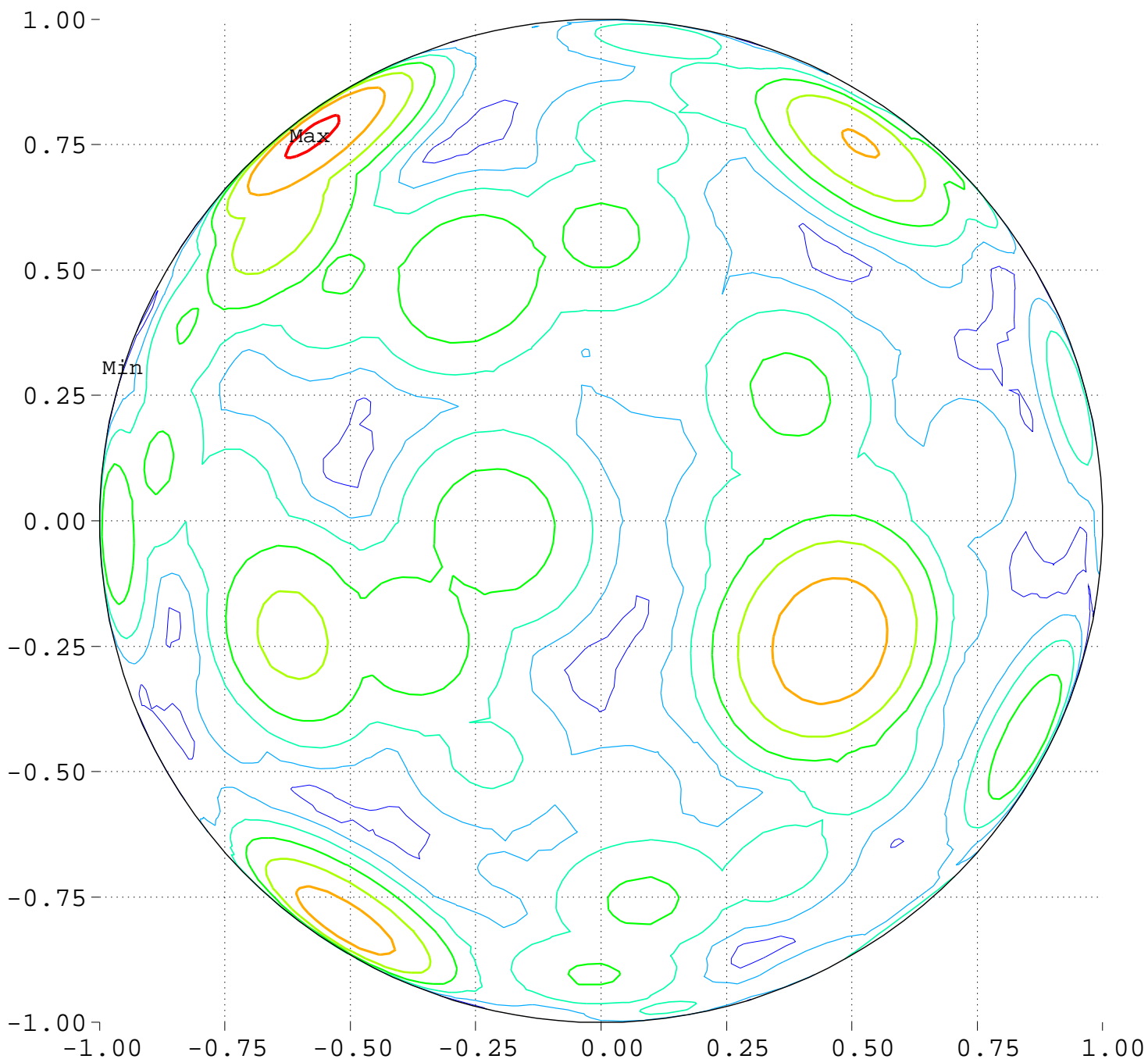
Minimum = 0.00      Maximum = 100.00

Contours around Nadirs of Sources



Maximize Minimum Intensity for 14 Sources  
Lowest Intensity: 3.384472

South Pole, 0 Deg = Right, 270 Deg = Top



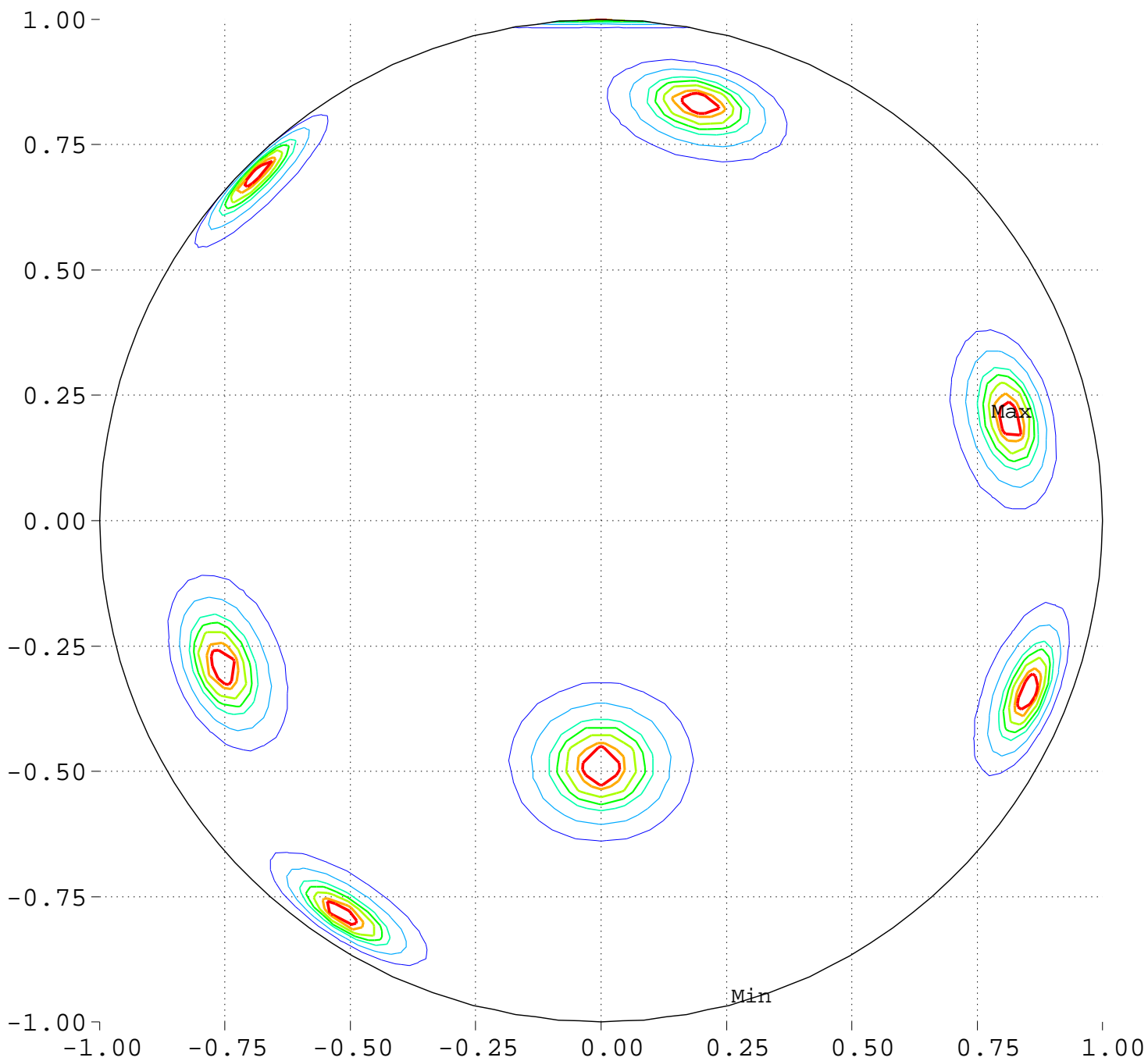
Minimum = 96.72      Maximum = 105.26

Contour Levels of Scaled Intensity

97.5000    98.7500    100.0000    101.2500    102.5000  
103.7500    105.0000

# Maximize Minimum Intensity for 14 Sources Source Locations

Equator View, Longitude 0 Deg



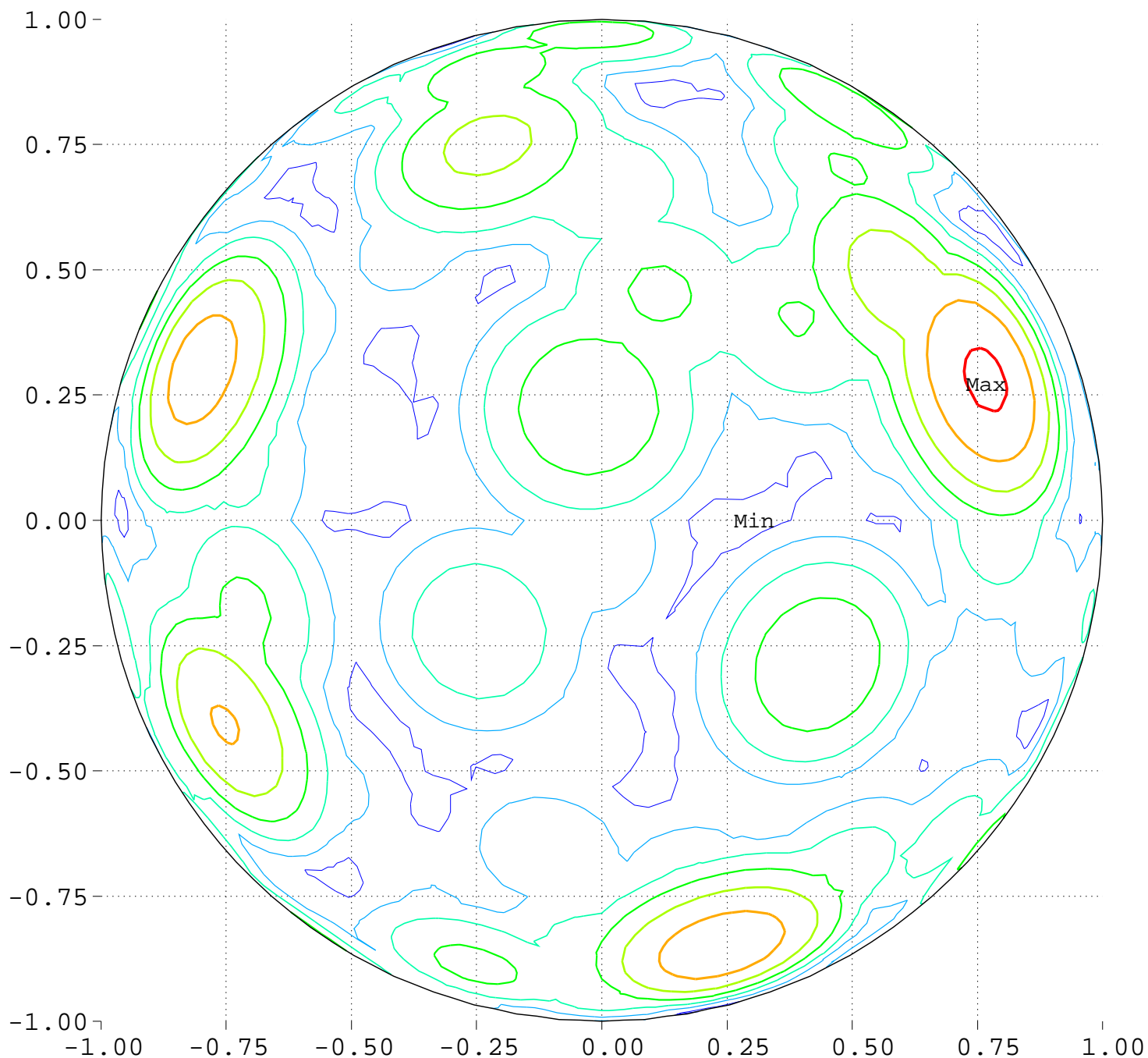
Minimum = 0.00      Maximum = 100.00

Contours around Nadirs of Sources



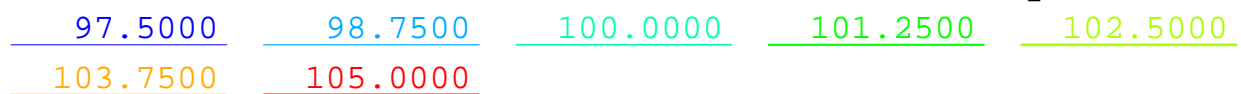
Maximize Minimum Intensity for 14 Sources  
Lowest Intensity: 3.384472

Equator View, Longitude 0 Deg



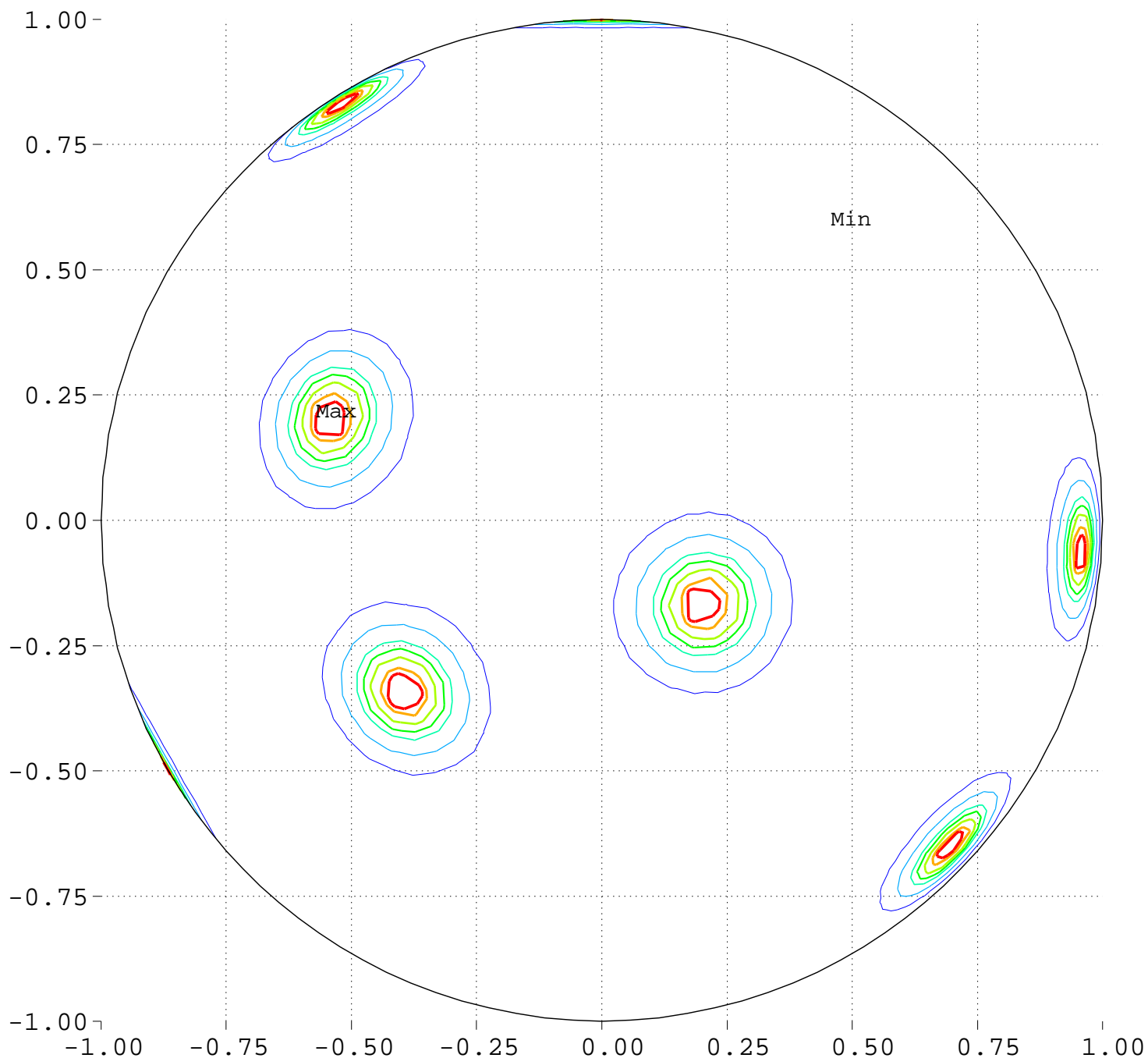
Minimum = 96.72      Maximum = 105.25

Contour Levels of Scaled Intensity



# Maximize Minimum Intensity for 14 Sources Source Locations

Equator View, Longitude 90 Deg



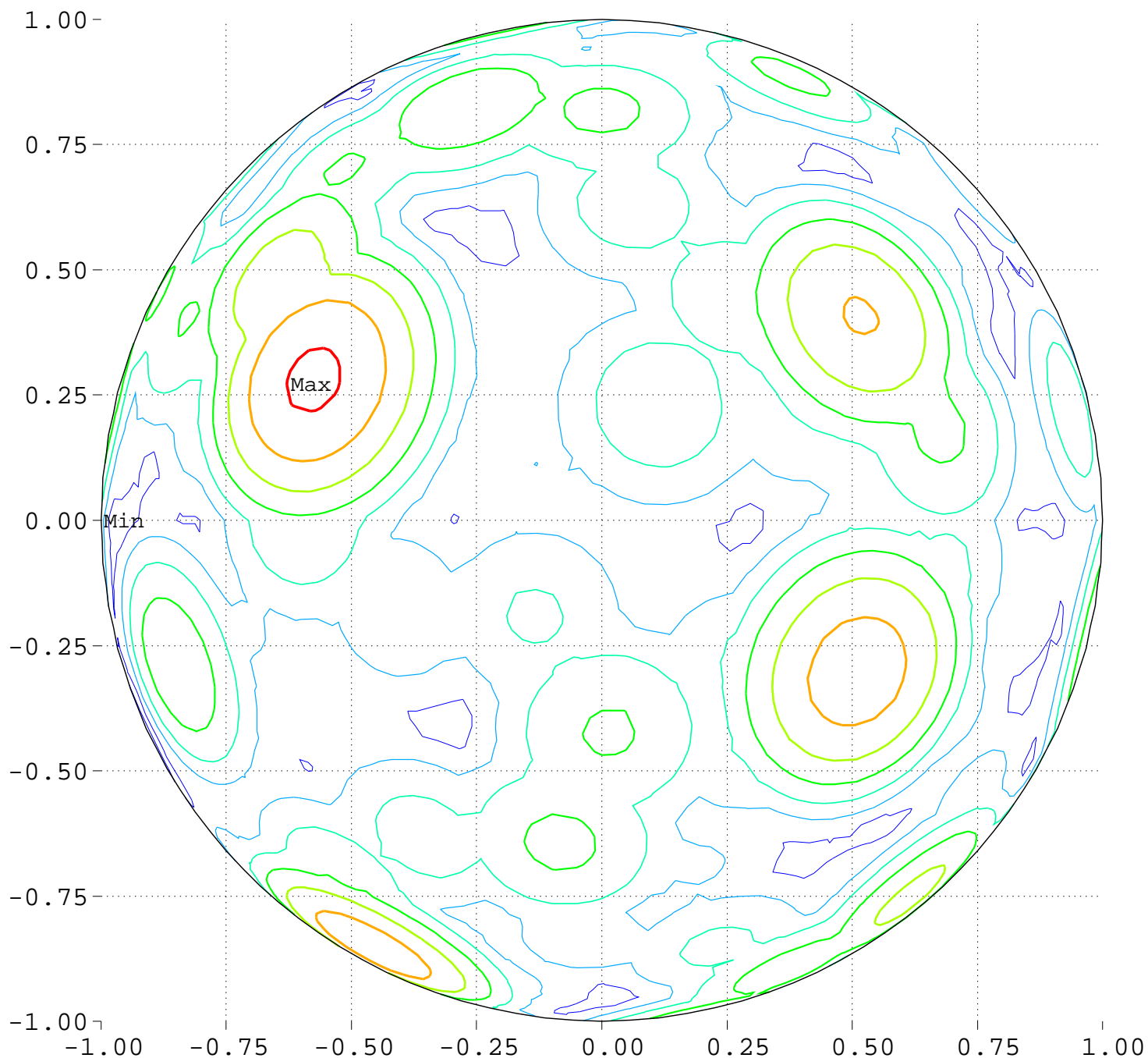
Minimum = 0.00      Maximum = 100.00

Contours around Nadirs of Sources



Maximize Minimum Intensity for 14 Sources  
Lowest Intensity: 3.384472

Equator View, Longitude 90 Deg



Minimum = 96.72      Maximum = 105.25

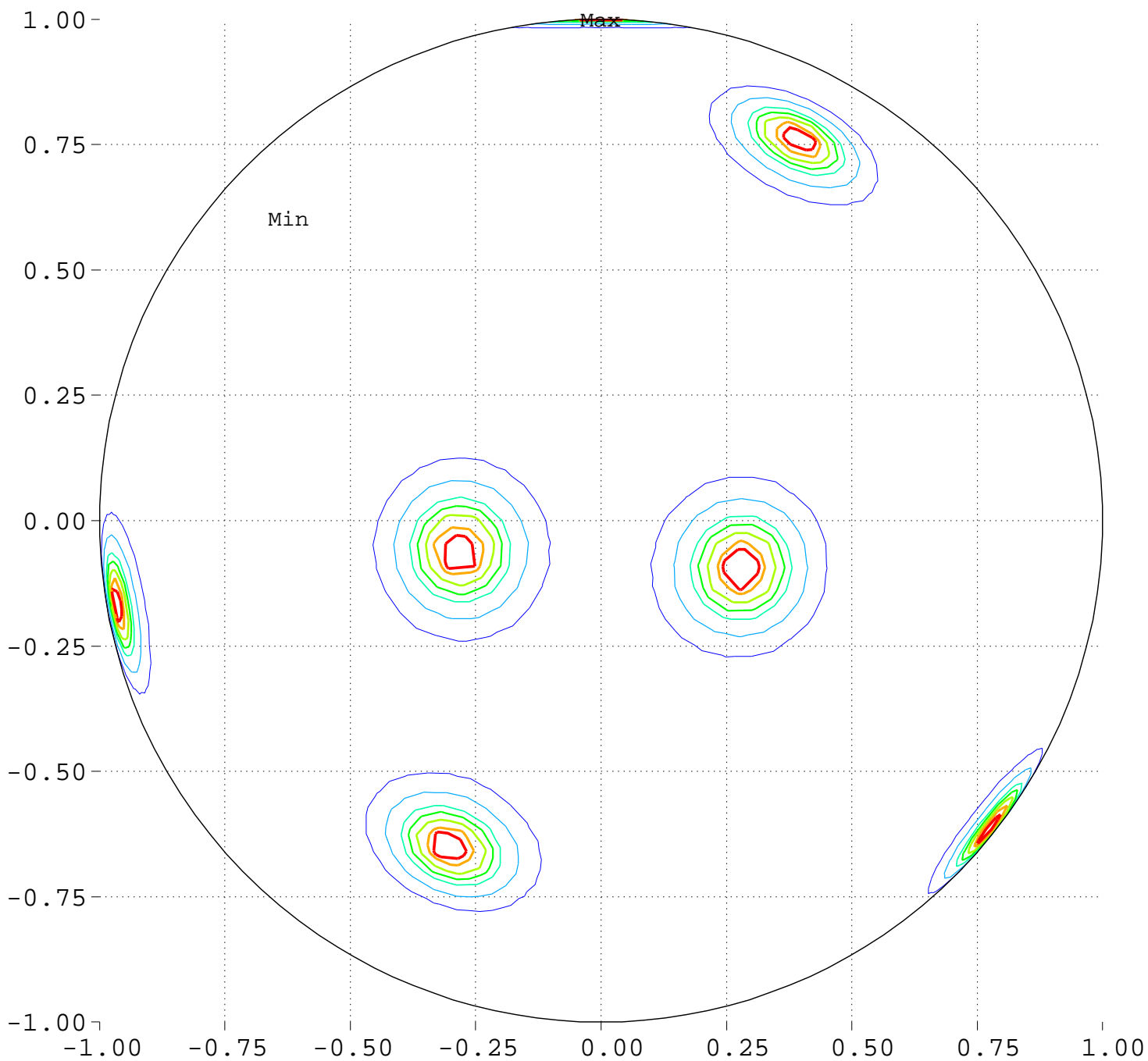
Contour Levels of Scaled Intensity

<u>97.5000</u>	<u>98.7500</u>	<u>100.0000</u>	<u>101.2500</u>	<u>102.5000</u>
<u>103.7500</u>	<u>105.0000</u>			



# Maximize Minimum Intensity for 14 Sources Source Locations

Equator View, Longitude 180 Deg



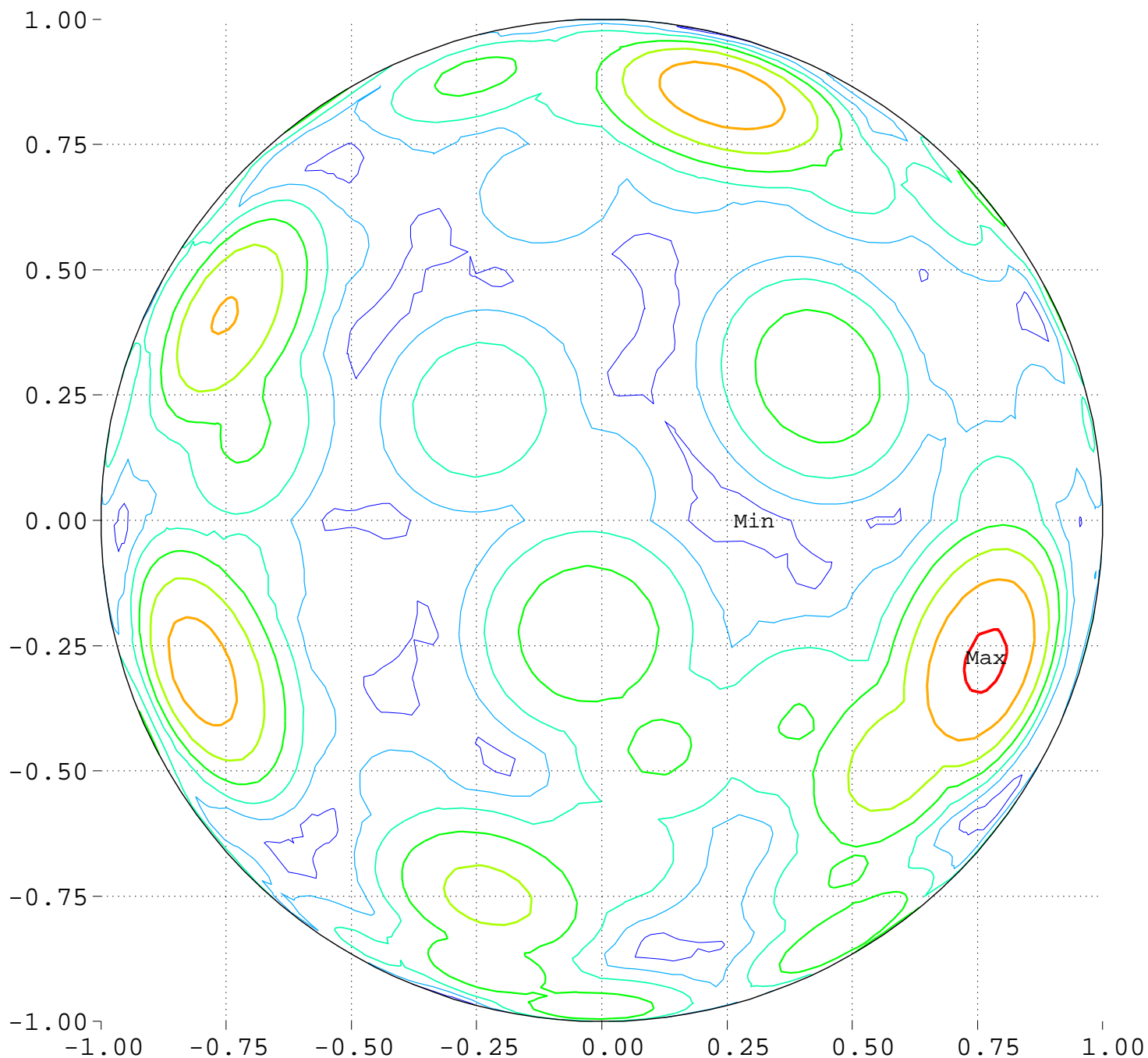
Minimum = 0.00      Maximum = 100.00

Contours around Nadirs of Sources



Maximize Minimum Intensity for 14 Sources  
Lowest Intensity: 3.384472

Equator View, Longitude 180 Deg



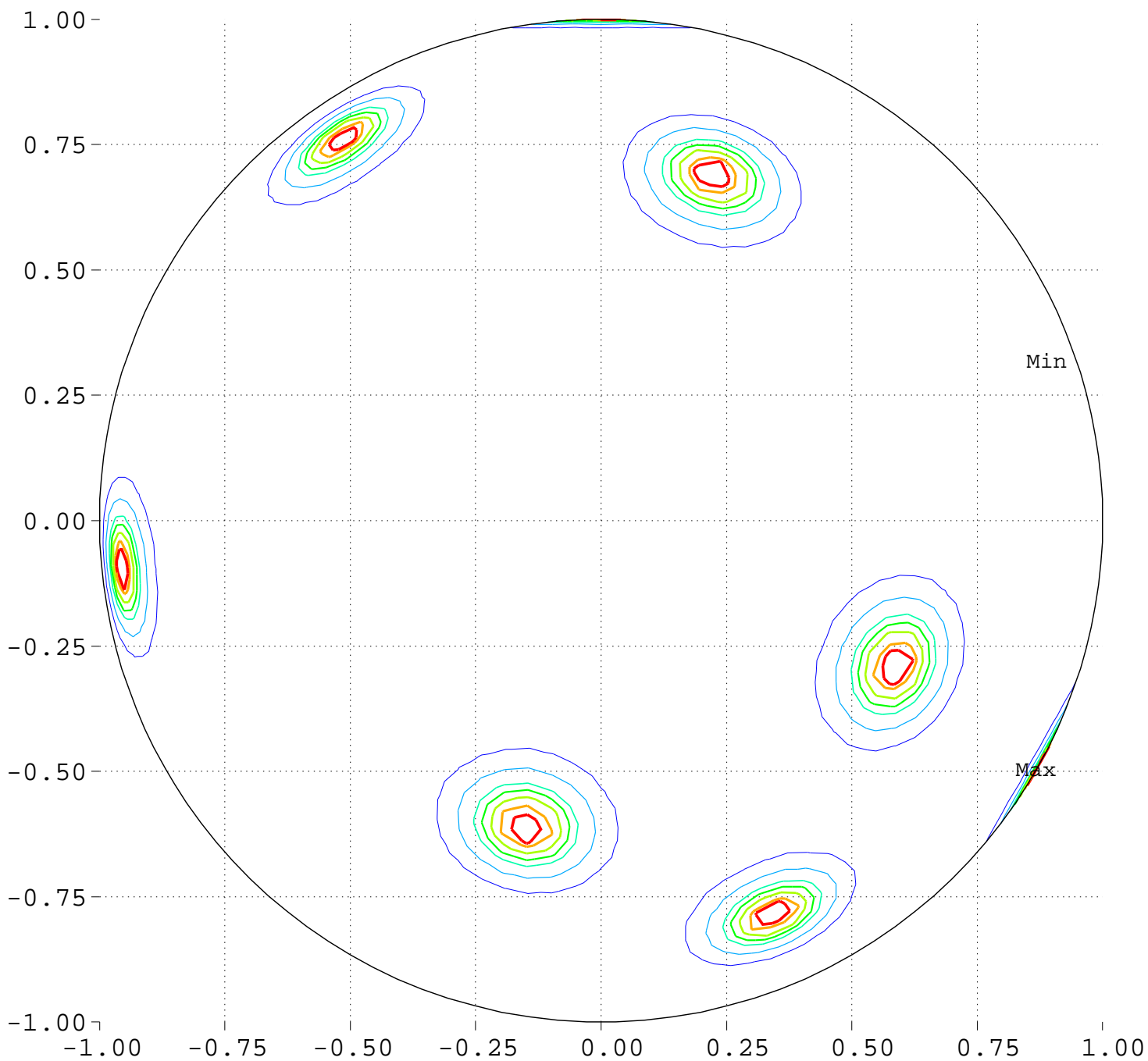
Minimum = 96.72      Maximum = 105.26

Contour Levels of Scaled Intensity

97.5000    98.7500    100.0000    101.2500    102.5000  
103.7500    105.0000

# Maximize Minimum Intensity for 14 Sources Source Locations

Equator View, Longitude 270 Deg



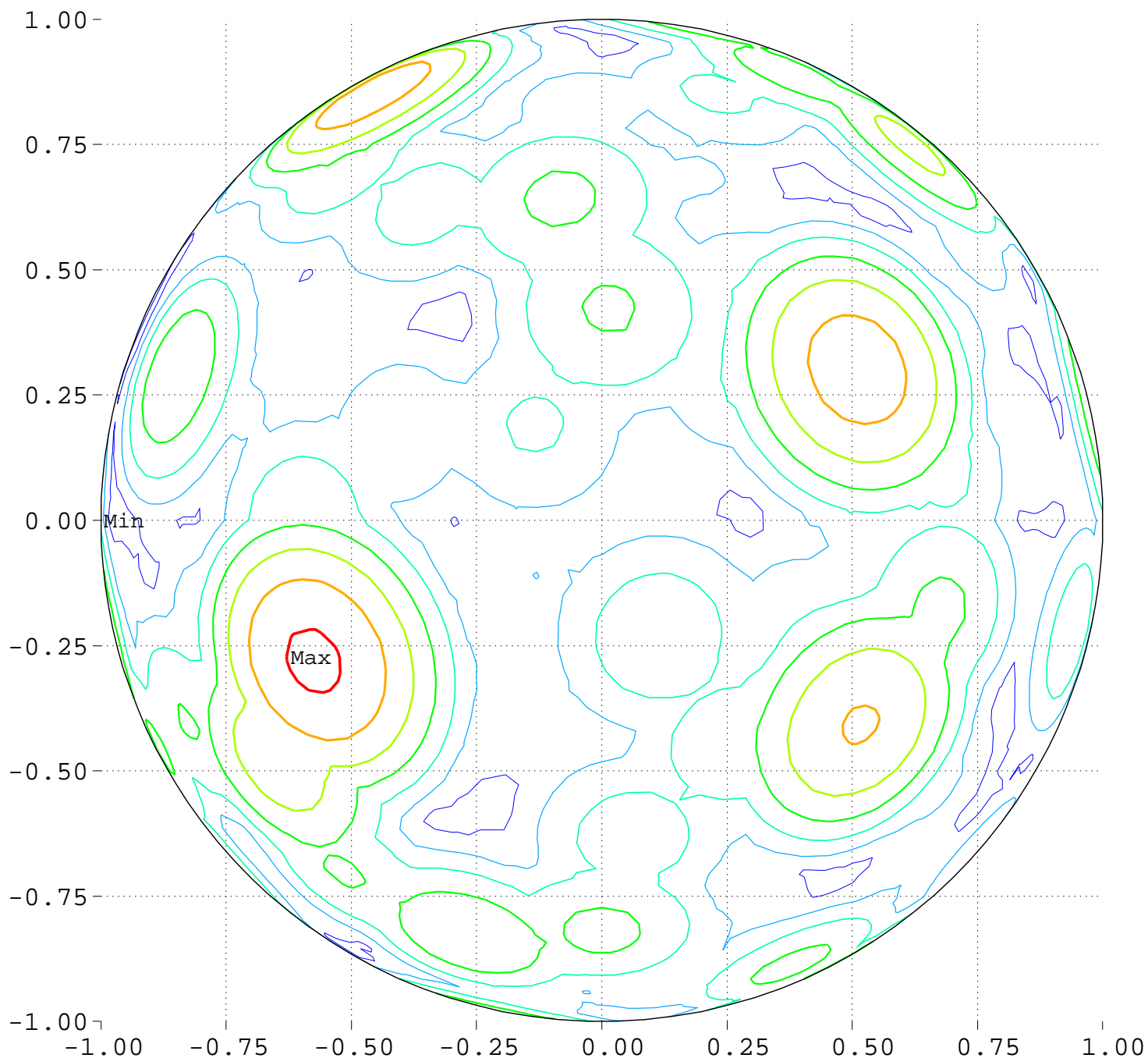
Minimum = 0.00      Maximum = 100.00

Contours around Nadirs of Sources



Maximize Minimum Intensity for 14 Sources  
Lowest Intensity: 3.384472

Equator View, Longitude 270 Deg



Minimum = 96.72      Maximum = 105.26

Contour Levels of Scaled Intensity

97.5000    98.7500    100.0000    101.2500    102.5000  
103.7500    105.0000