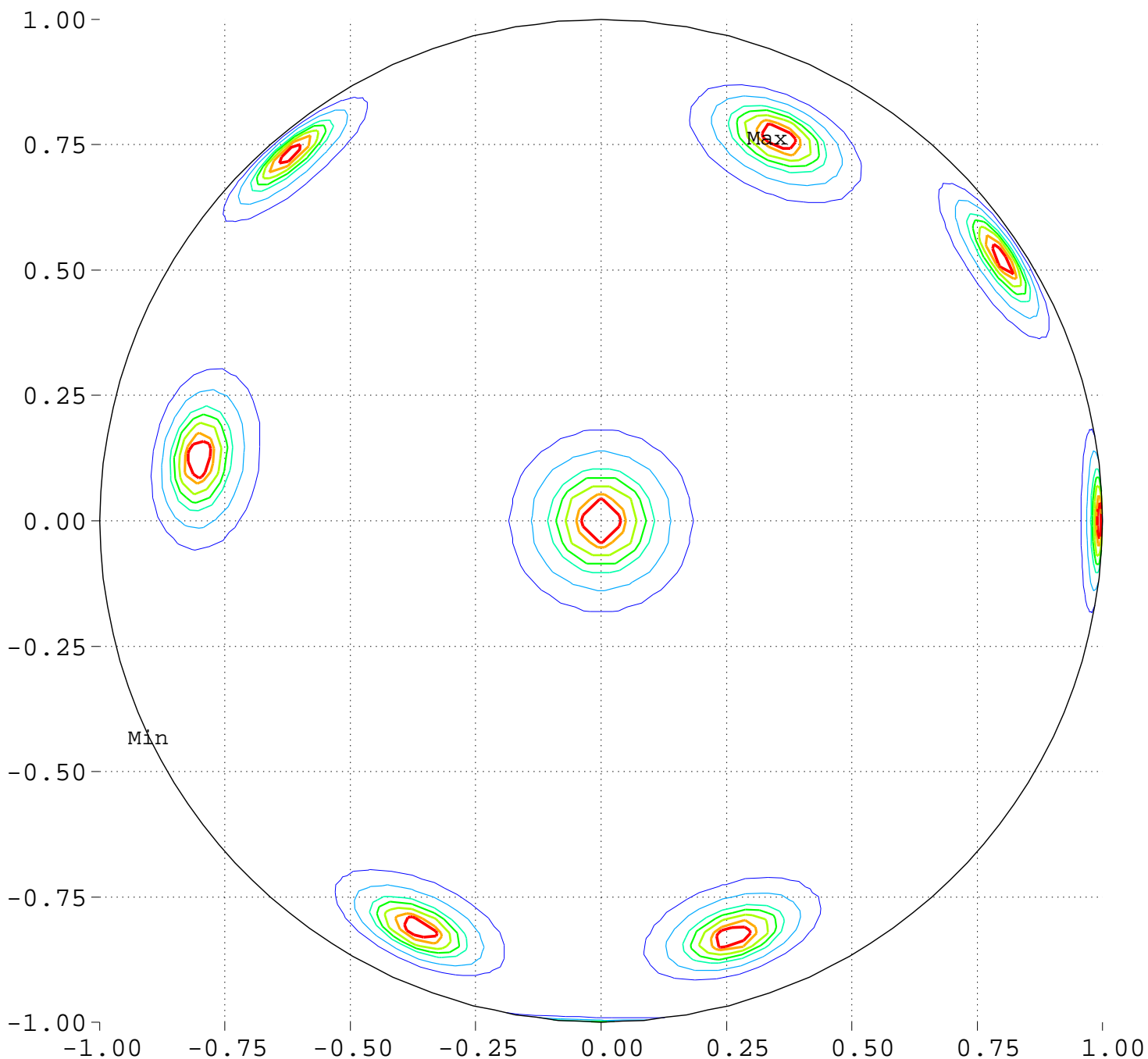


# Minimize Maximum Intensity for 15 Sources Source Locations

North Pole, 0 Deg = Right, 90 Deg = Top



Minimum = 0.00      Maximum = 100.00

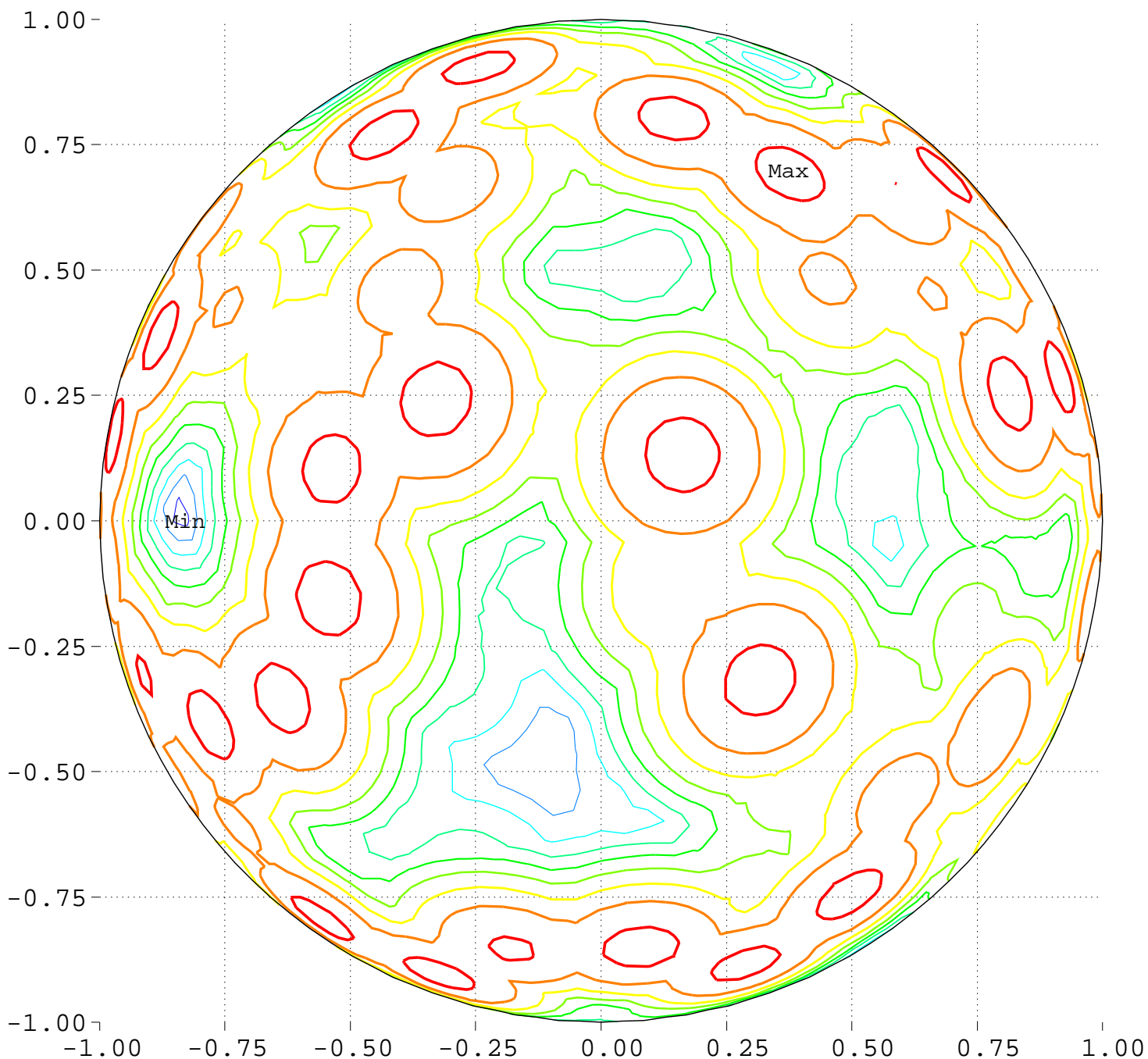
Contours around Nadirs of Sources



# Minimize Maximum Intensity for 15 Sources

Highest Intensity: 3.836995

North Pole, 0 Deg = Right, 90 Deg = Top



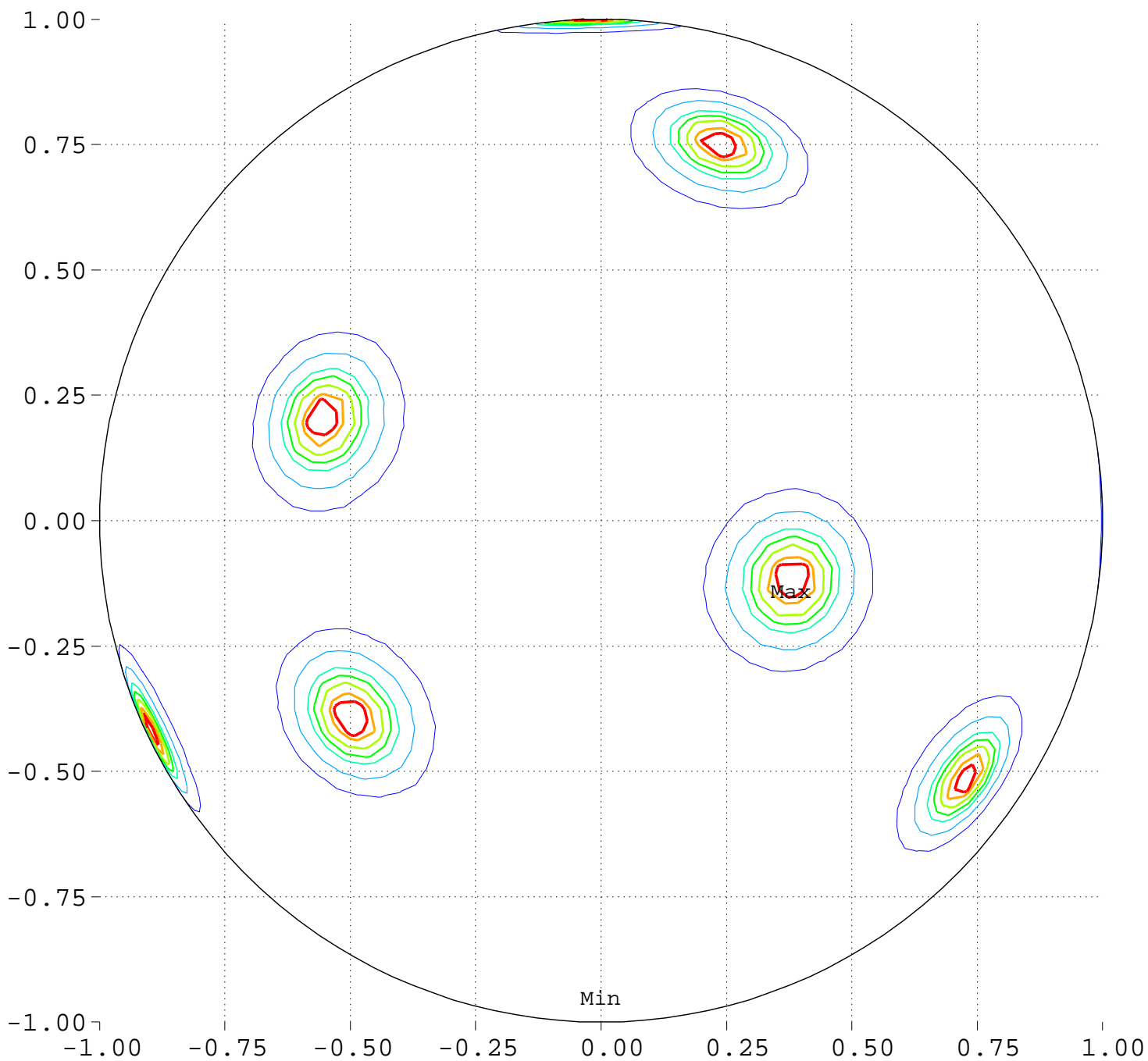
Minimum = 93.68      Maximum = 102.32

Contour Levels of Scaled Intensity

<u>94.0000</u>	<u>95.0000</u>	<u>96.0000</u>	<u>97.0000</u>	<u>98.0000</u>
<u>99.0000</u>	<u>100.0000</u>	<u>101.0000</u>	<u>102.0000</u>	

# Minimize Maximum Intensity for 15 Sources Source Locations

South Pole, 0 Deg = Right, 270 Deg = Top



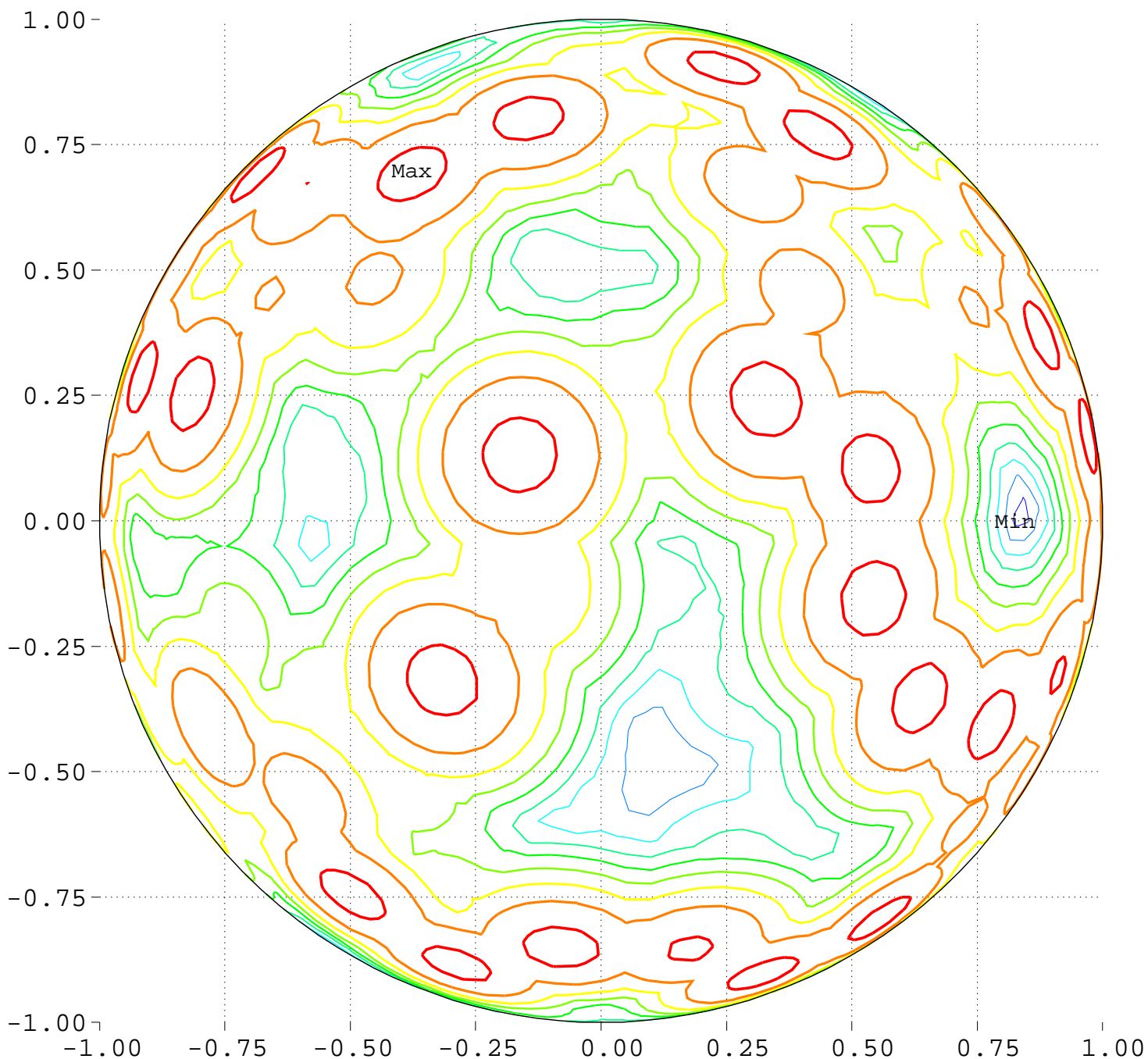
Minimum = 0.00      Maximum = 100.00

Contours around Nadirs of Sources



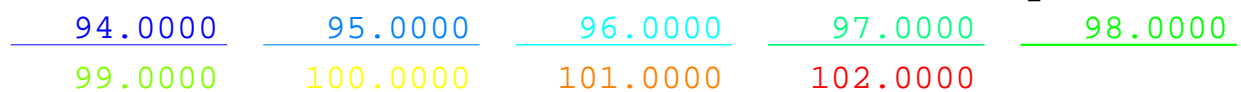
Minimize Maximum Intensity for 15 Sources  
Highest Intensity: 3.836995

South Pole, 0 Deg = Right, 270 Deg = Top



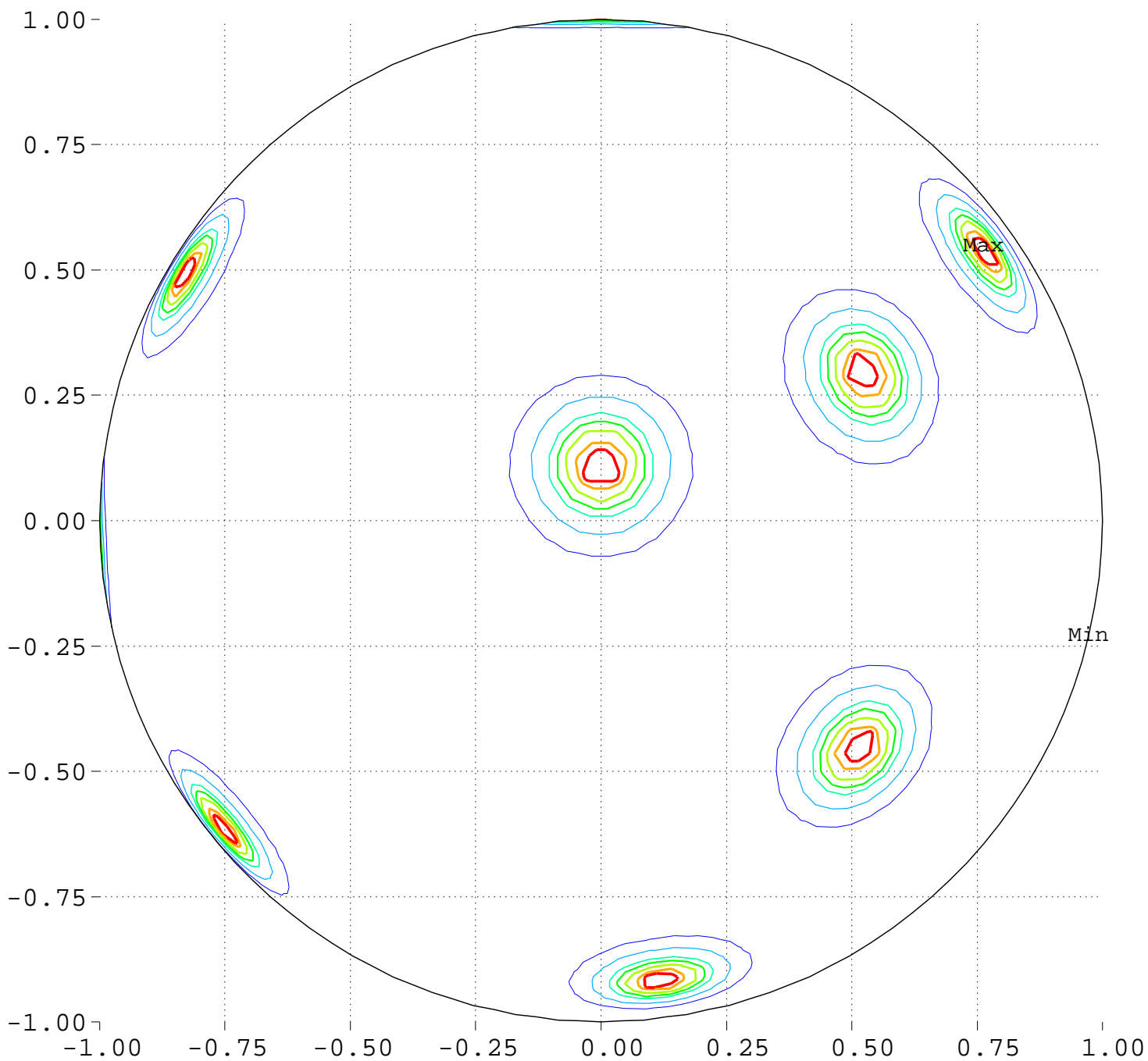
Minimum = 93.68      Maximum = 102.32

Contour Levels of Scaled Intensity



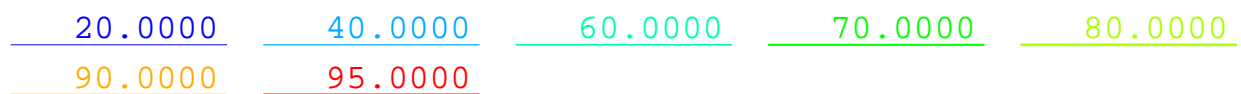
# Minimize Maximum Intensity for 15 Sources Source Locations

Equator View, Longitude 0 Deg



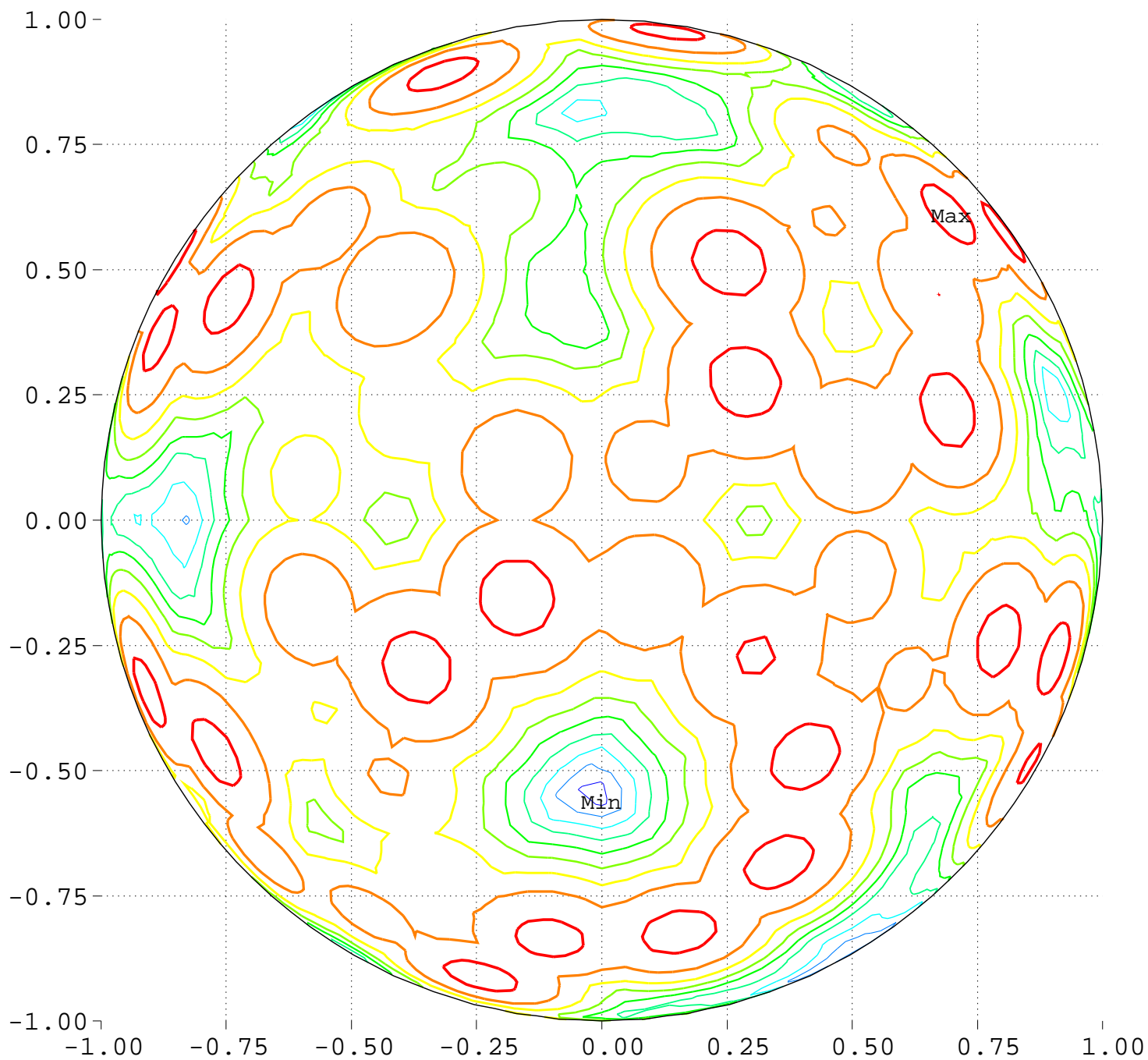
Minimum = 0.00      Maximum = 100.00

Contours around Nadirs of Sources



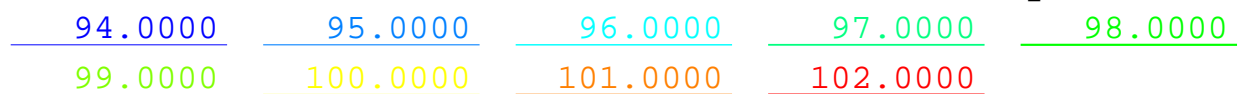
Minimize Maximum Intensity for 15 Sources  
Highest Intensity: 3.836995

Equator View, Longitude 0 Deg



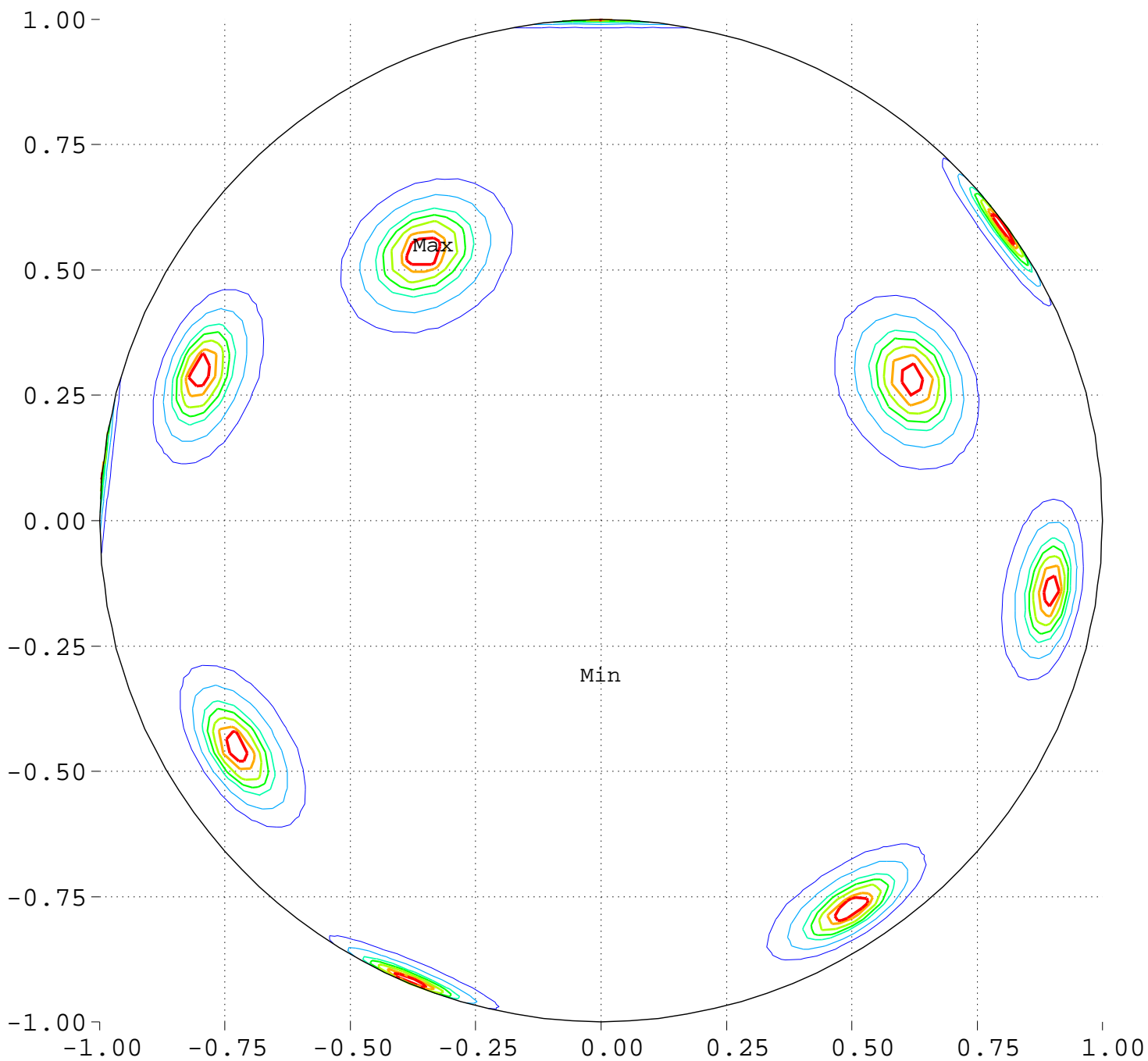
Minimum = 93.68      Maximum = 102.32

Contour Levels of Scaled Intensity



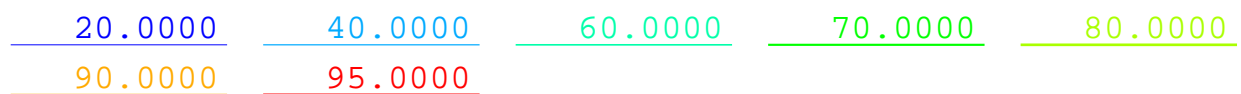
# Minimize Maximum Intensity for 15 Sources Source Locations

Equator View, Longitude 90 Deg



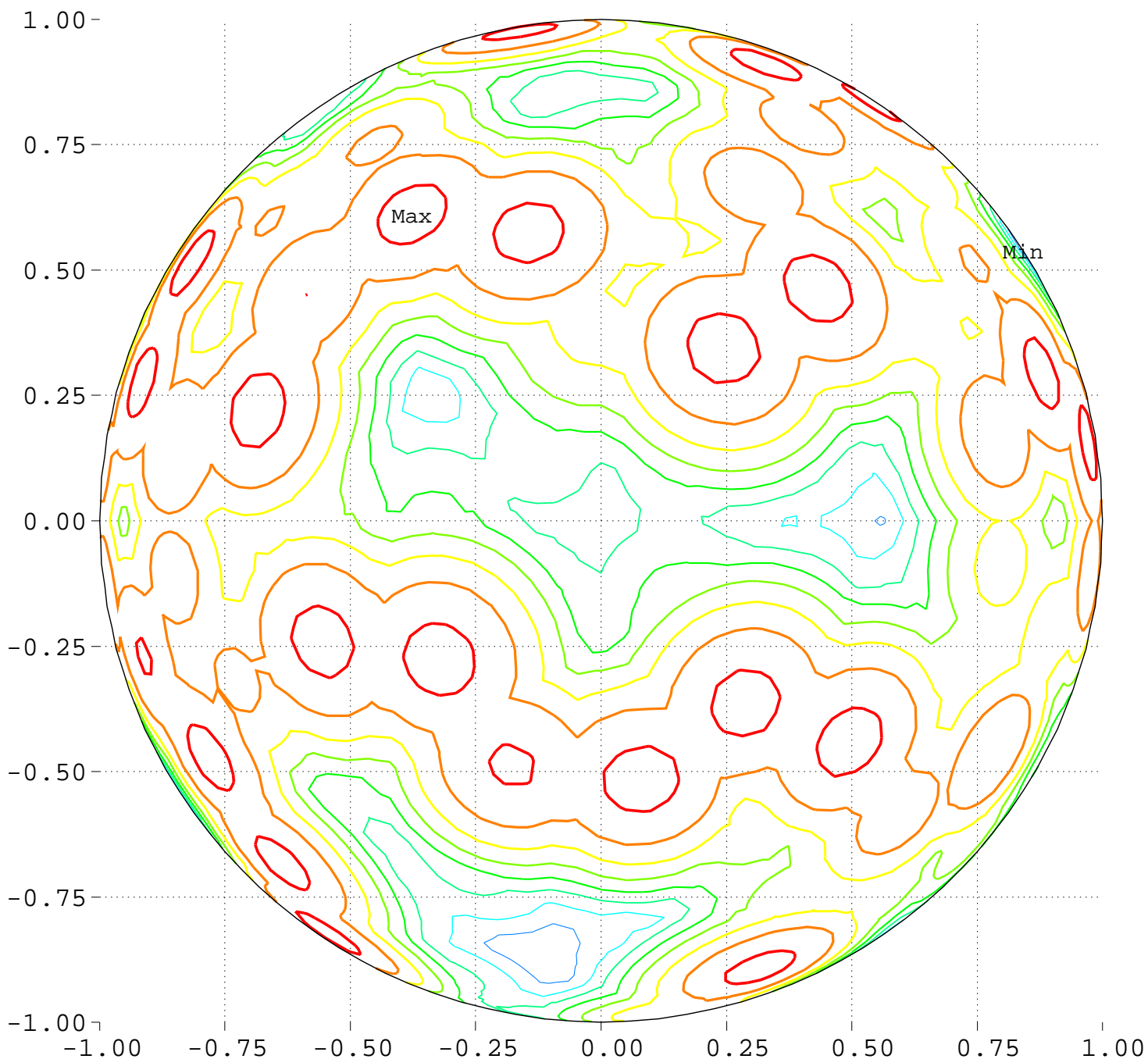
Minimum = 0.00      Maximum = 100.00

Contours around Nadirs of Sources



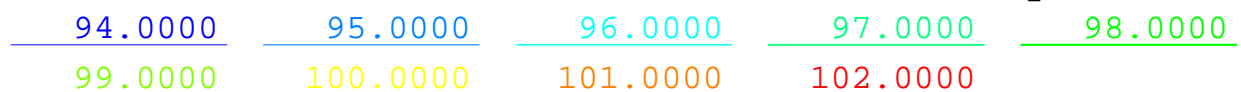
Minimize Maximum Intensity for 15 Sources  
Highest Intensity: 3.836995

Equator View, Longitude 90 Deg



Minimum = 93.89      Maximum = 102.32

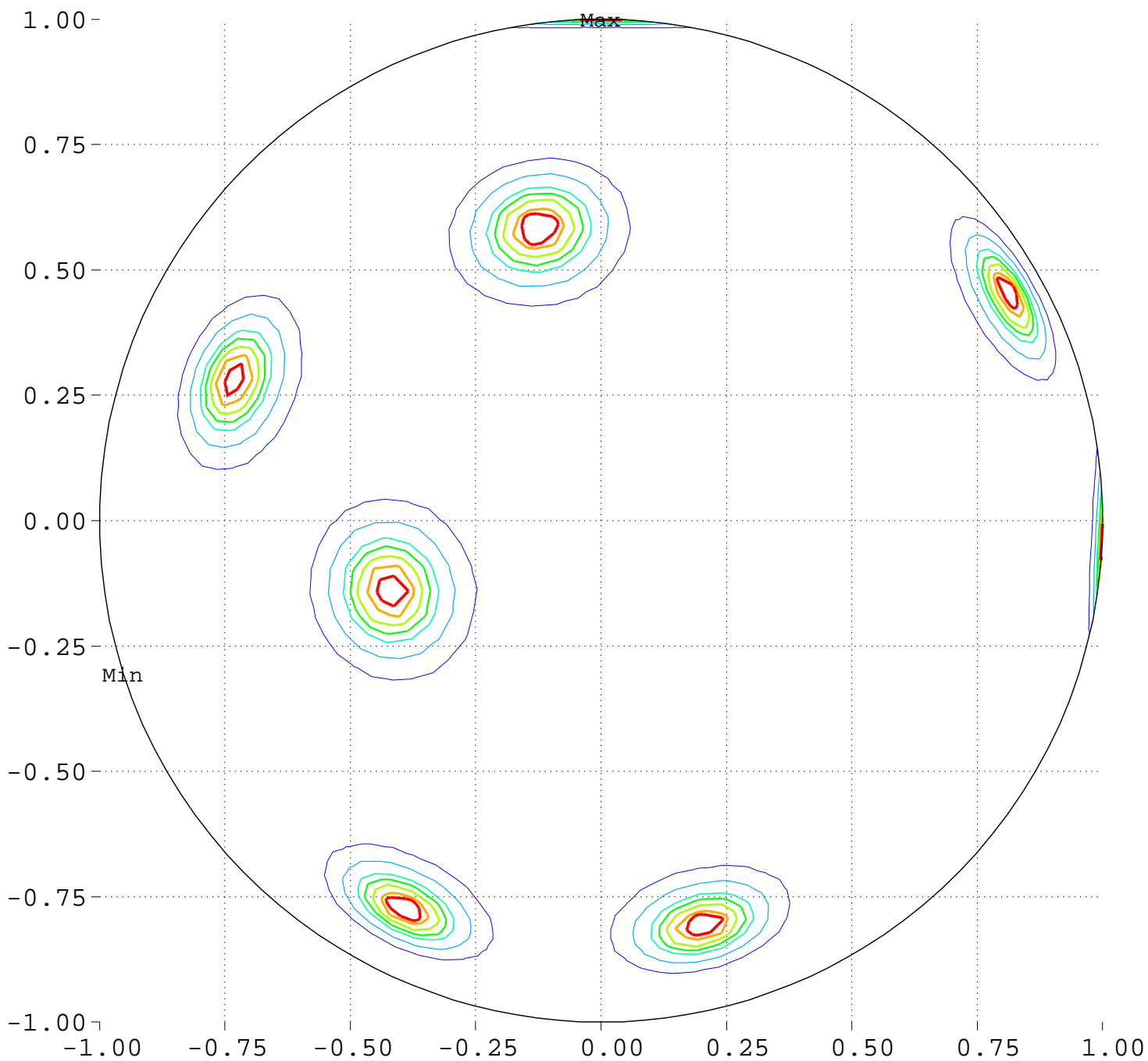
Contour Levels of Scaled Intensity





# Minimize Maximum Intensity for 15 Sources Source Locations

Equator View, Longitude 180 Deg



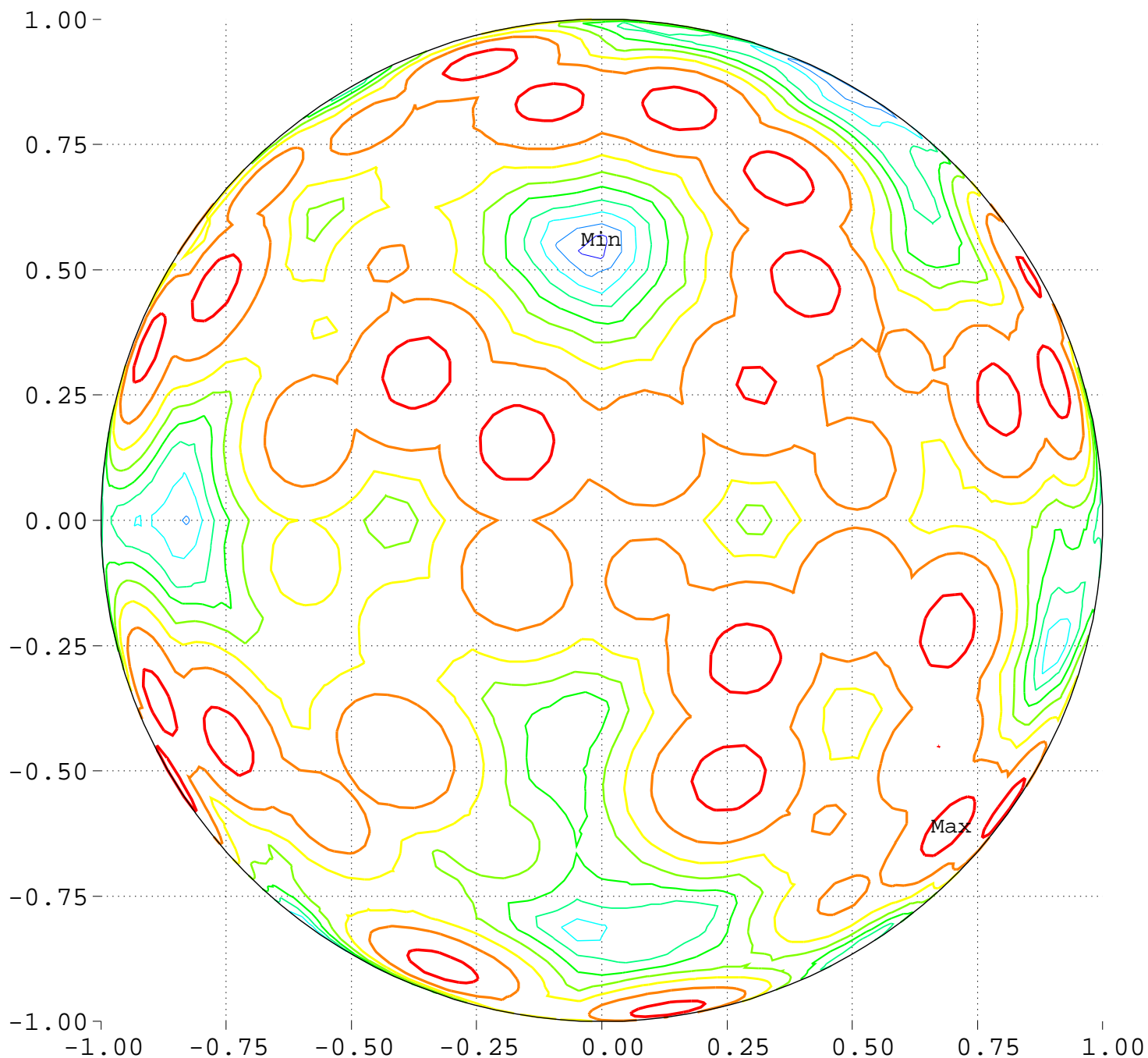
Minimum = 0.00      Maximum = 100.00

Contours around Nadirs of Sources



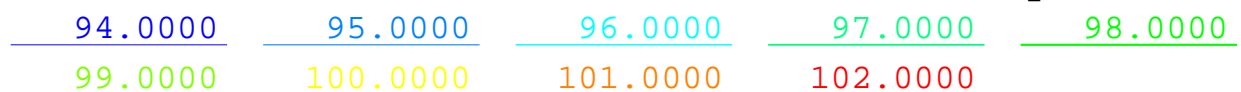
Minimize Maximum Intensity for 15 Sources  
Highest Intensity: 3.836995

Equator View, Longitude 180 Deg



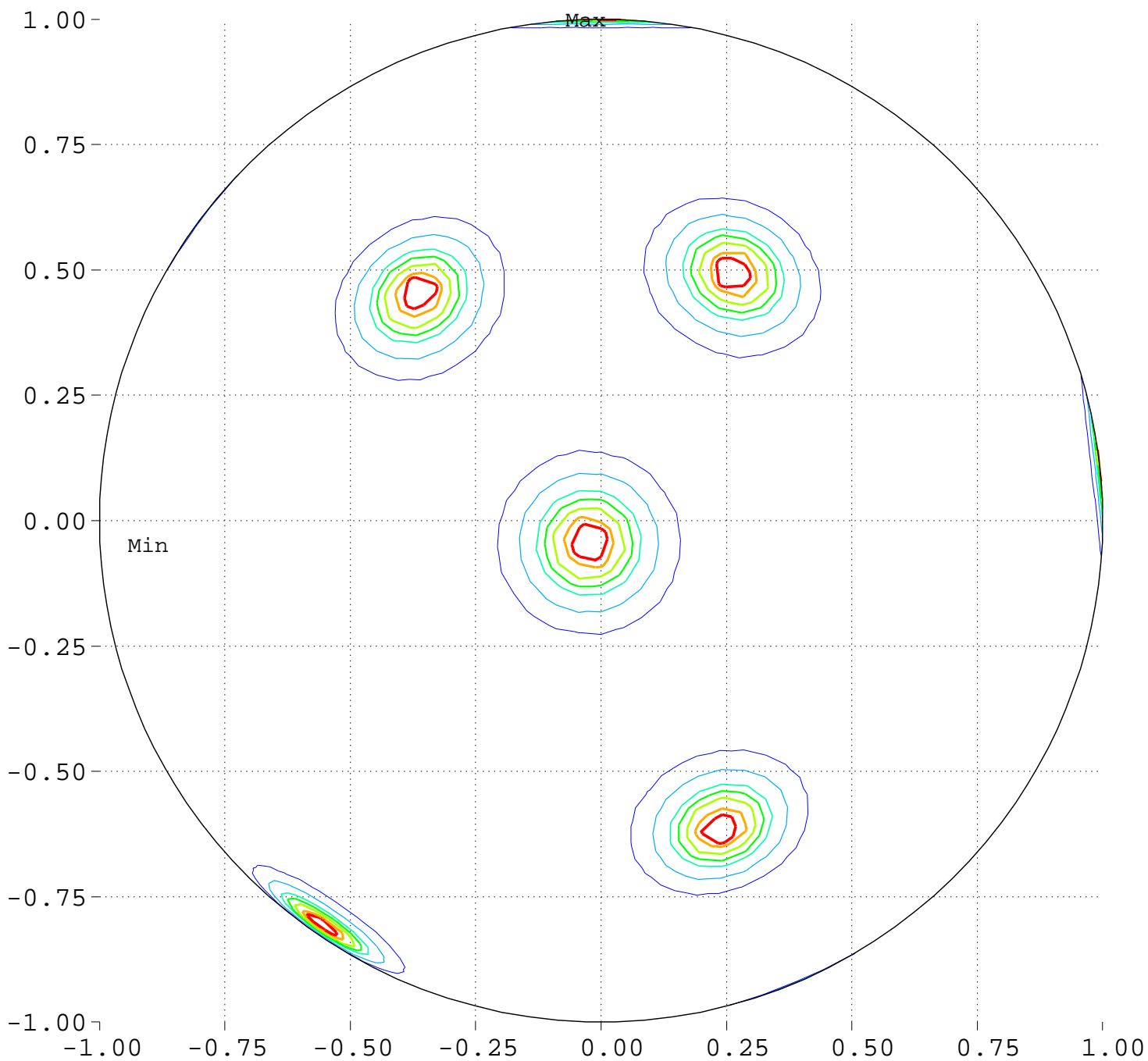
Minimum = 93.68      Maximum = 102.32

Contour Levels of Scaled Intensity



# Minimize Maximum Intensity for 15 Sources Source Locations

Equator View, Longitude 270 Deg



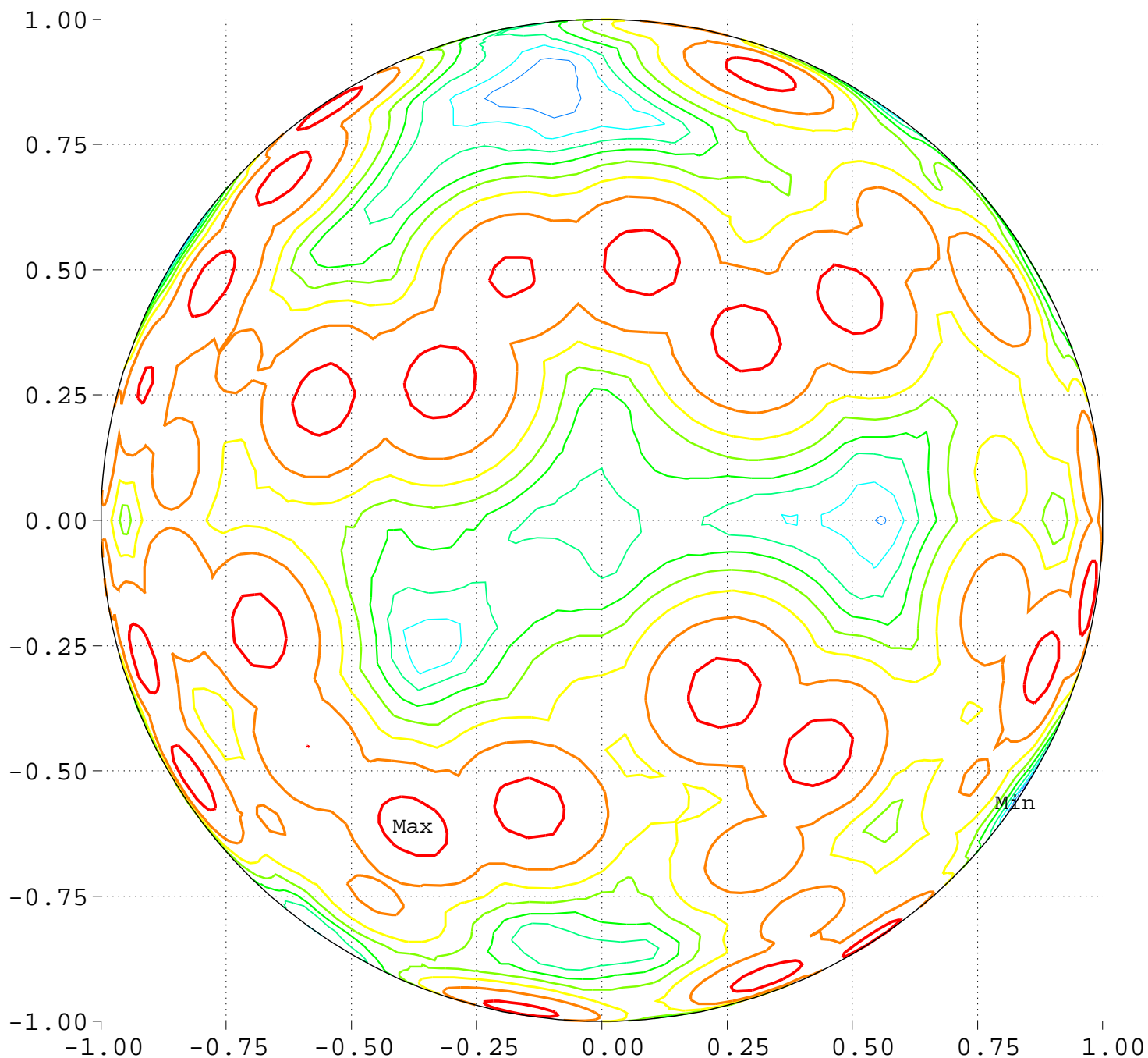
Minimum = 0.00      Maximum = 100.00

Contours around Nadirs of Sources

20.0000    40.0000    60.0000    70.0000    80.0000  
90.0000    95.0000

Minimize Maximum Intensity for 15 Sources  
Highest Intensity: 3.836995

Equator View, Longitude 270 Deg



Minimum = 93.68      Maximum = 102.32

Contour Levels of Scaled Intensity

