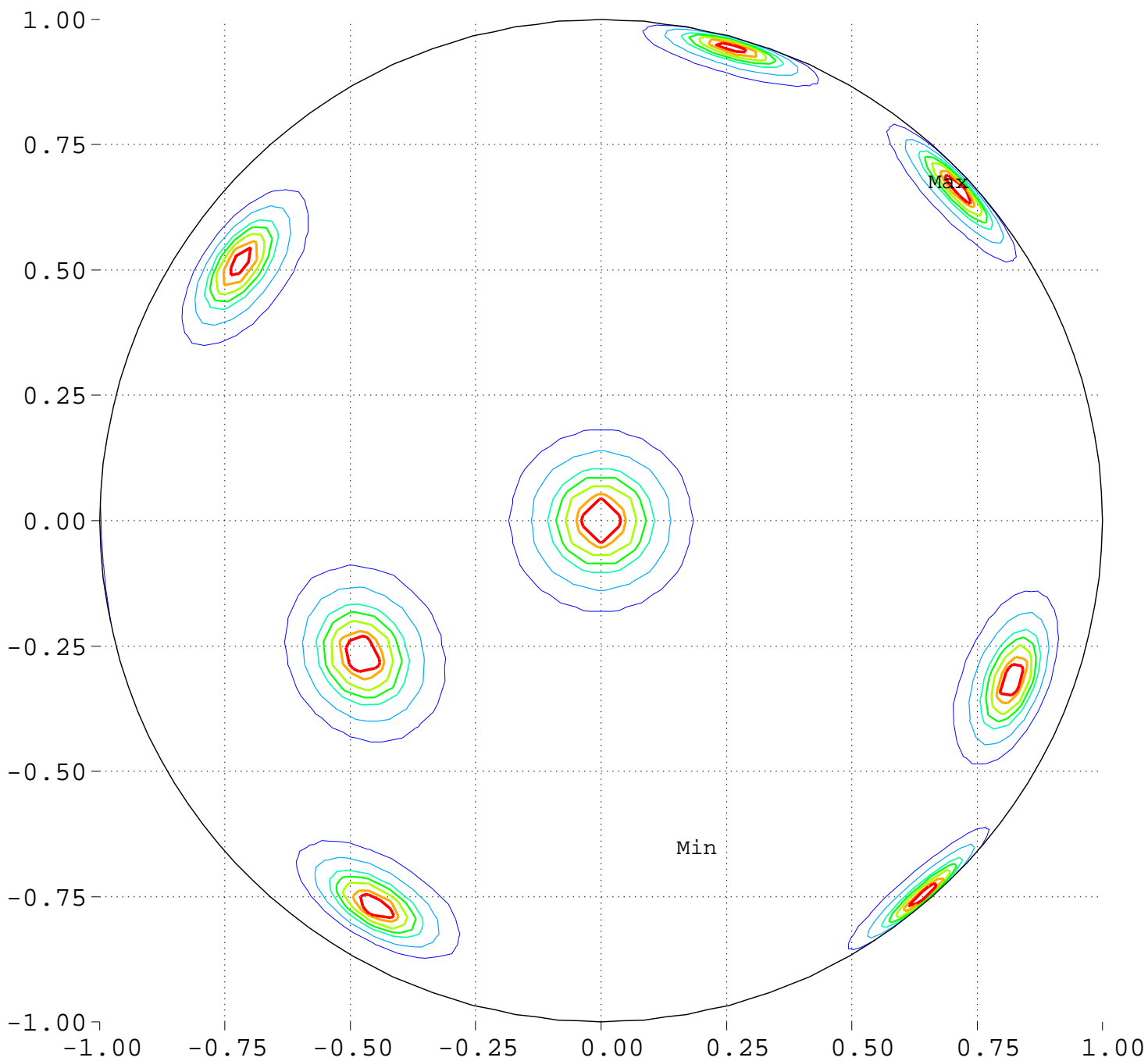


Maximize Minimum Intensity for 15 Sources Source Locations

North Pole, 0 Deg = Right, 90 Deg = Top



Minimum = 0.00 Maximum = 100.00

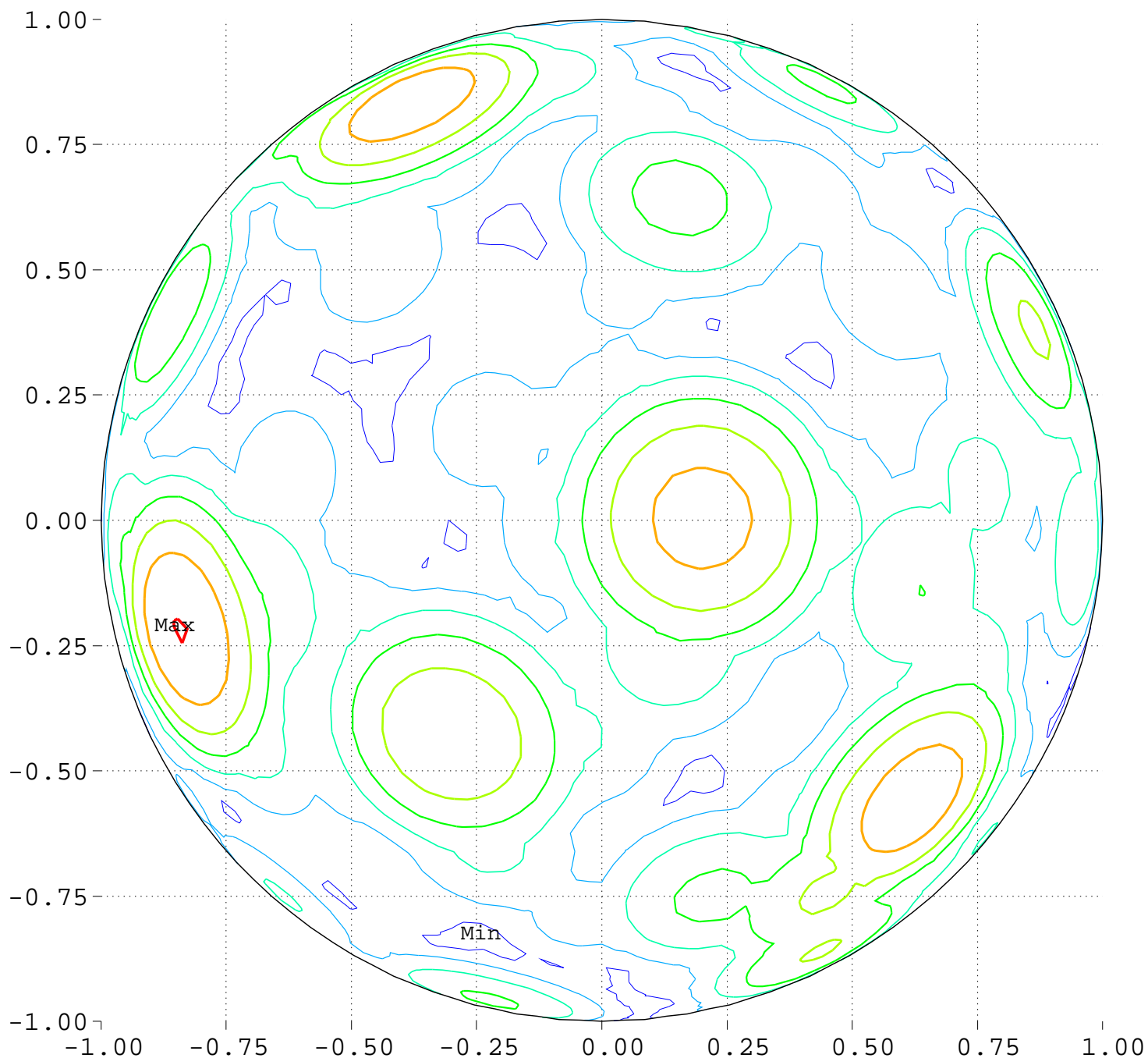
Contours around Nadirs of Sources



Maximize Minimum Intensity for 15 Sources

Lowest Intensity: 3.632252

North Pole, 0 Deg = Right, 90 Deg = Top



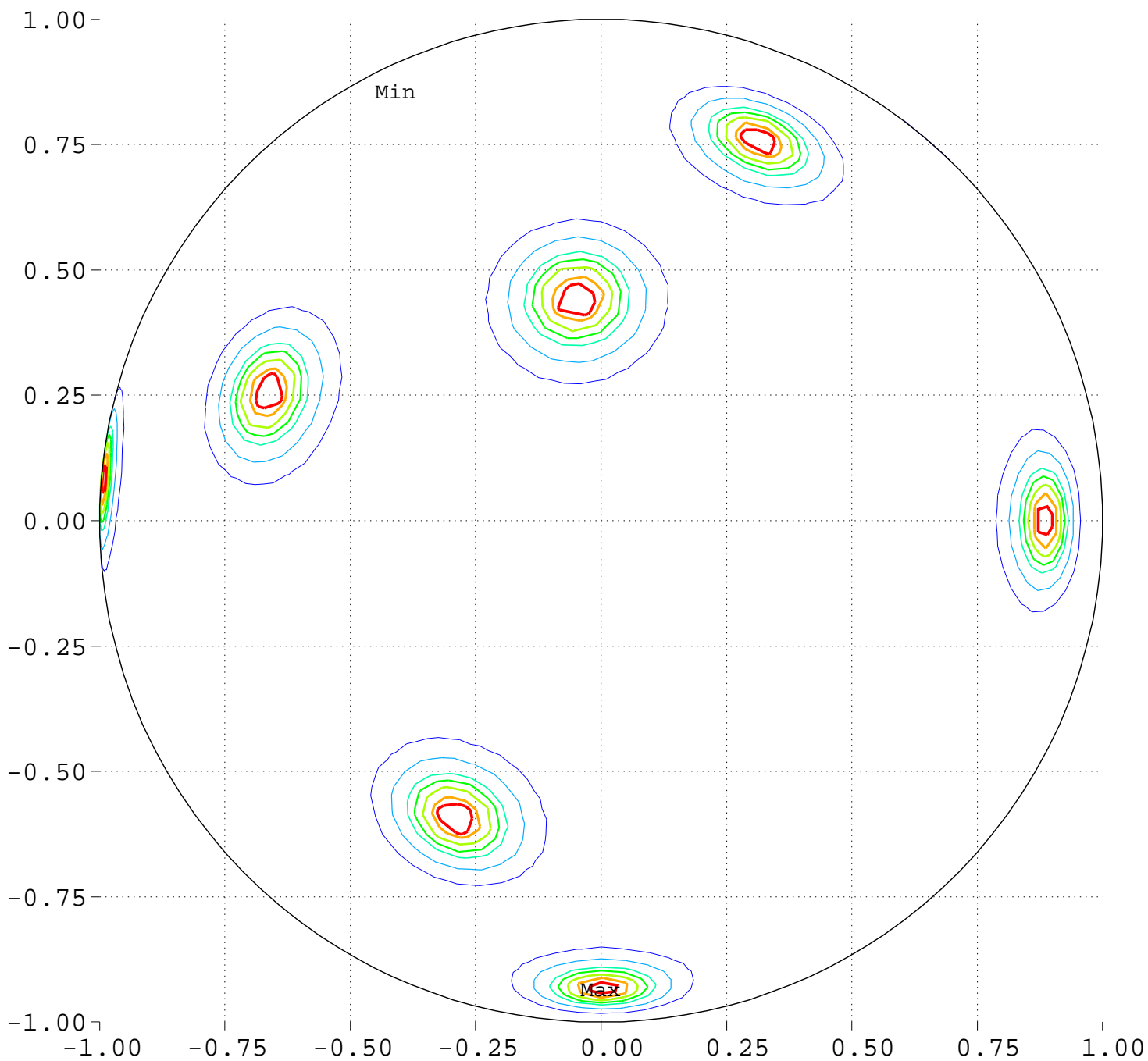
Minimum = 96.95 Maximum = 105.04

Contour Levels of Scaled Intensity

97.5000 98.7500 100.0000 101.2500 102.5000
103.7500 105.0000

Maximize Minimum Intensity for 15 Sources Source Locations

South Pole, 0 Deg = Right, 270 Deg = Top



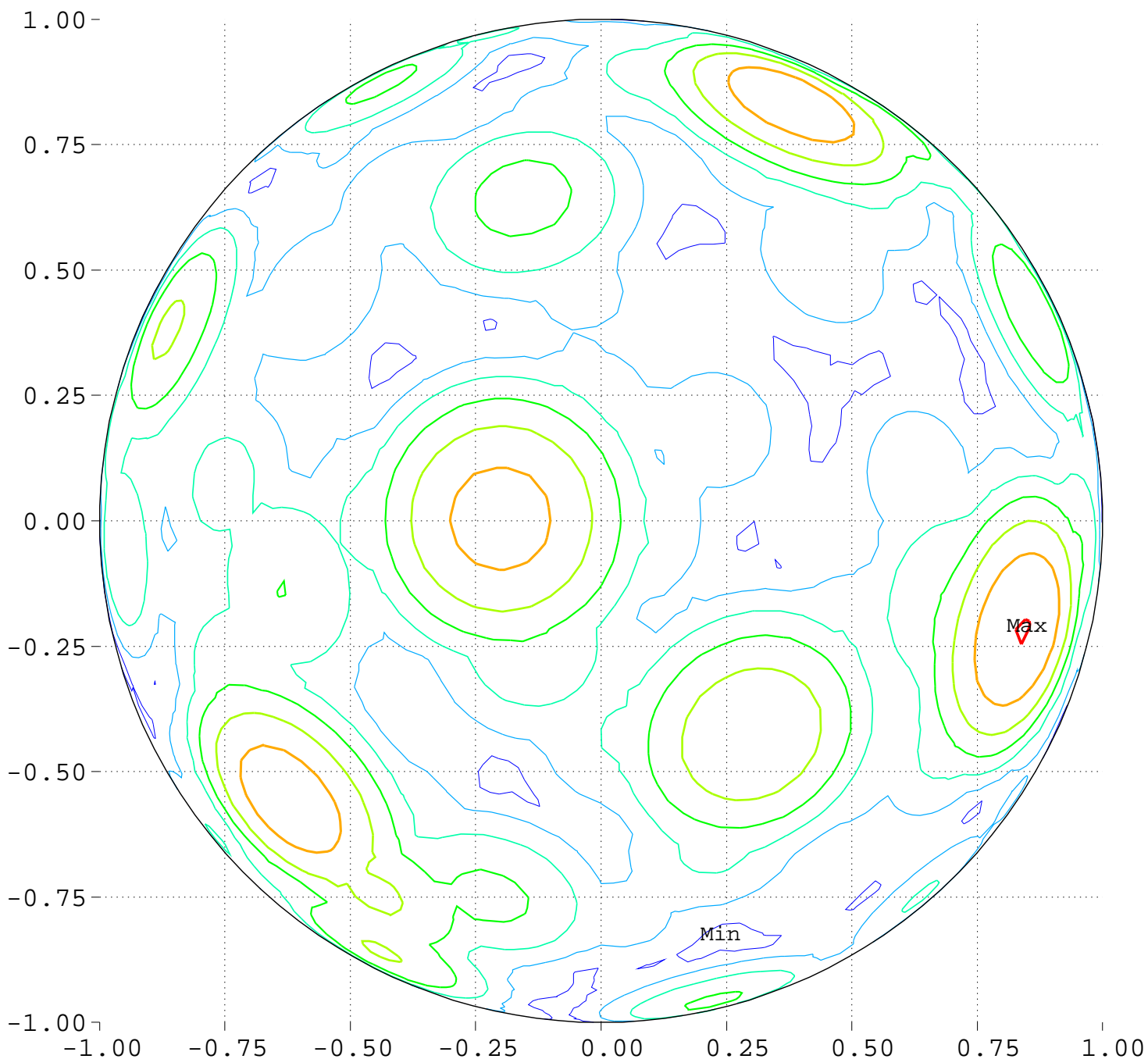
Minimum = 0.00 Maximum = 100.00

Contours around Nadirs of Sources



Maximize Minimum Intensity for 15 Sources
Lowest Intensity: 3.632252

South Pole, 0 Deg = Right, 270 Deg = Top



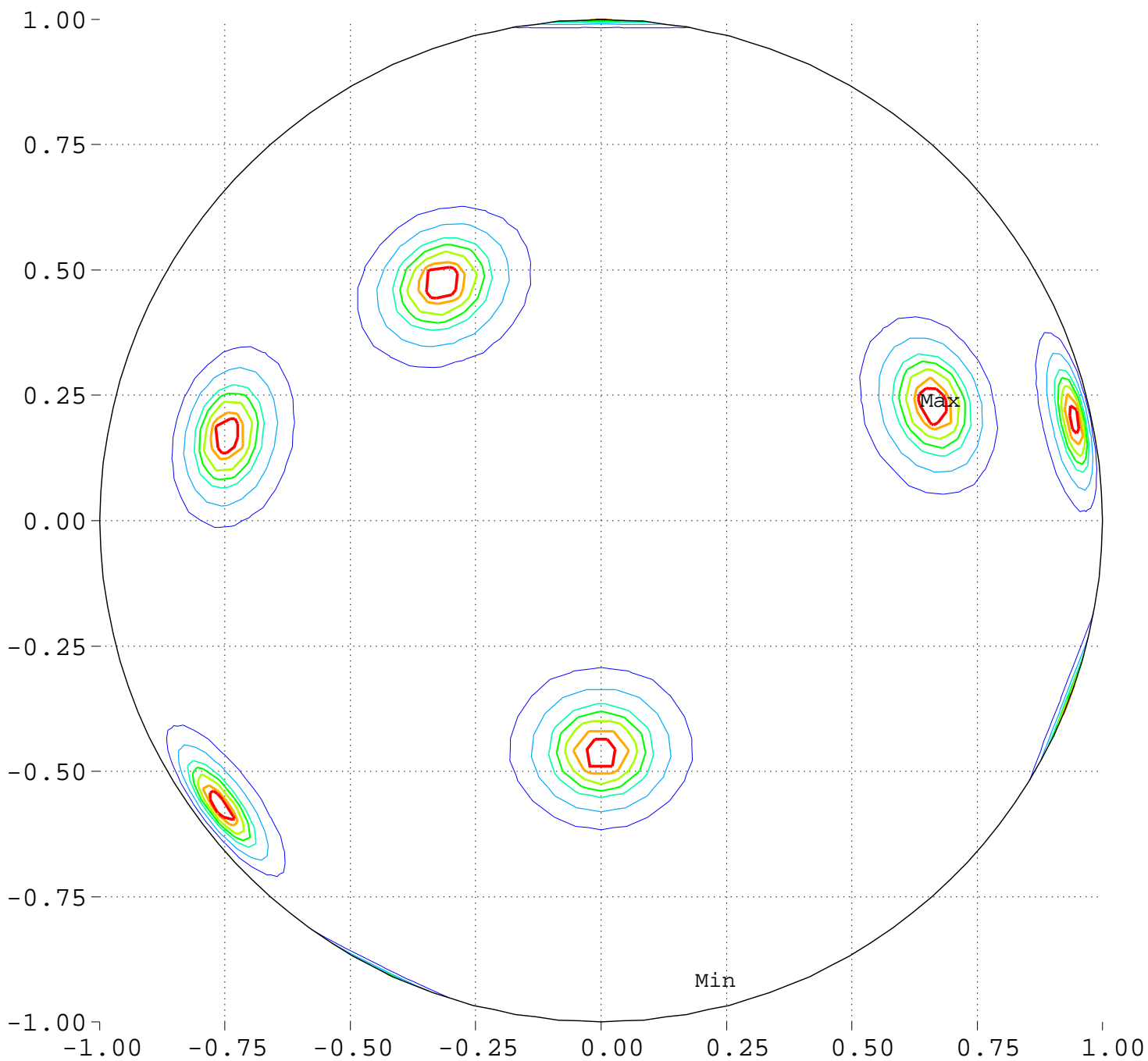
Minimum = 96.95 Maximum = 105.04

Contour Levels of Scaled Intensity

<u>97.5000</u>	<u>98.7500</u>	<u>100.0000</u>	<u>101.2500</u>	<u>102.5000</u>
<u>103.7500</u>	<u>105.0000</u>			

Maximize Minimum Intensity for 15 Sources Source Locations

Equator View, Longitude 0 Deg



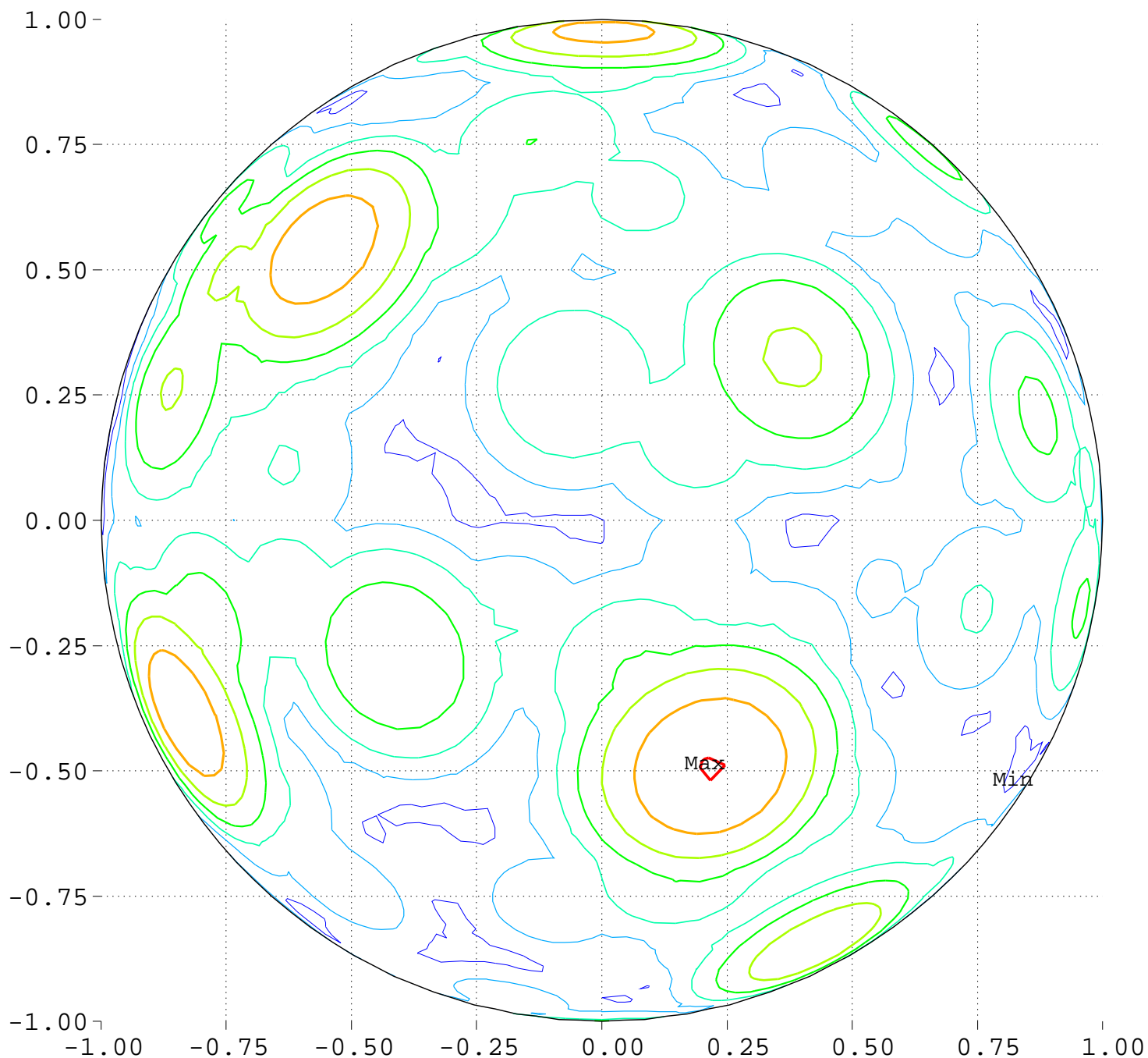
Minimum = 0.00 Maximum = 100.00

Contours around Nadirs of Sources



Maximize Minimum Intensity for 15 Sources
Lowest Intensity: 3.632252

Equator View, Longitude 0 Deg



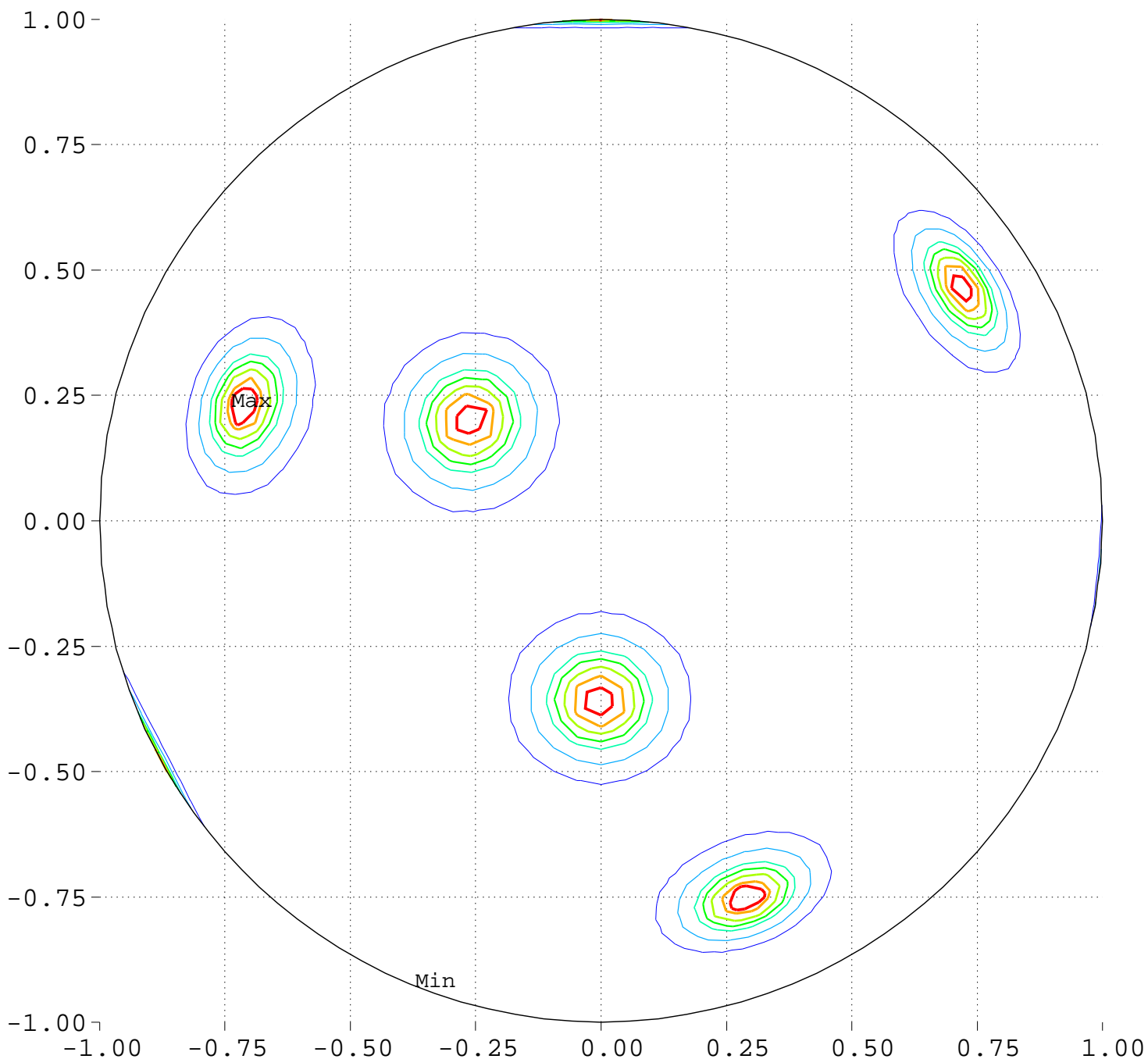
Minimum = 96.95 Maximum = 105.04

Contour Levels of Scaled Intensity

97.5000 98.7500 100.0000 101.2500 102.5000
103.7500 105.0000

Maximize Minimum Intensity for 15 Sources Source Locations

Equator View, Longitude 90 Deg



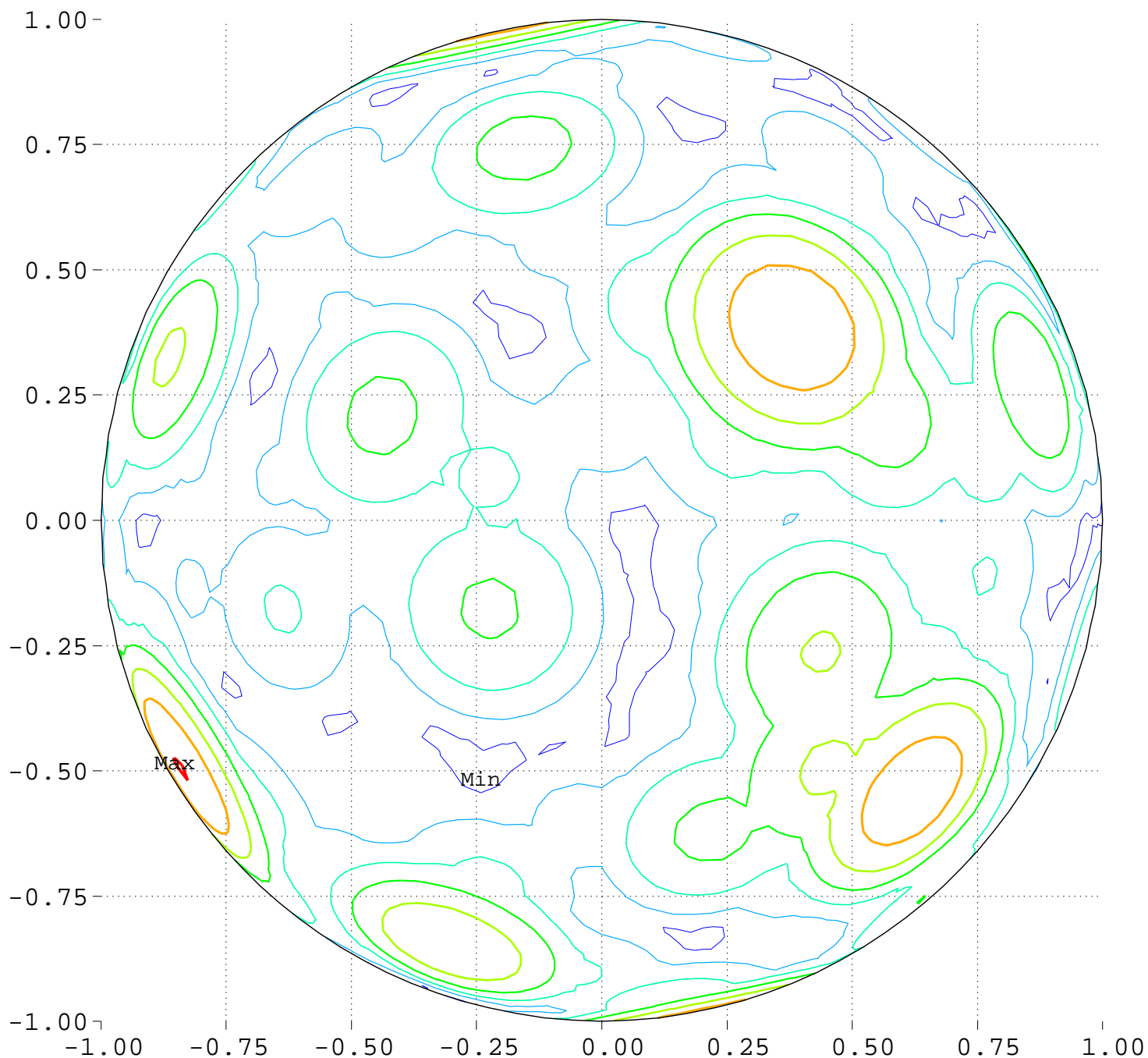
Minimum = 0.00 Maximum = 100.00

Contours around Nadirs of Sources



Maximize Minimum Intensity for 15 Sources
Lowest Intensity: 3.632252

Equator View, Longitude 90 Deg



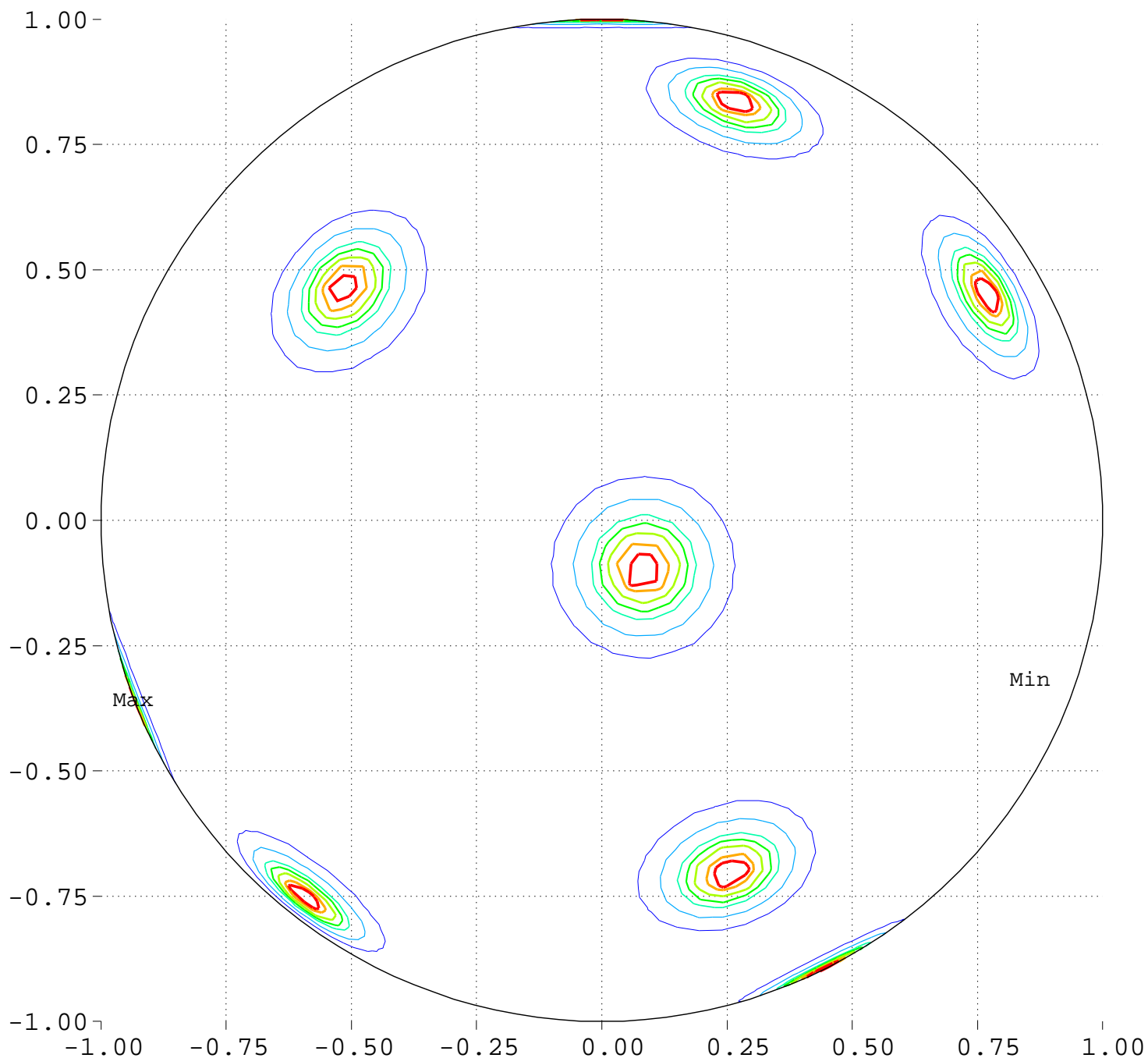
Minimum = 96.95 Maximum = 105.04

Contour Levels of Scaled Intensity

<u>97.5000</u>	<u>98.7500</u>	<u>100.0000</u>	<u>101.2500</u>	<u>102.5000</u>
<u>103.7500</u>	<u>105.0000</u>			

Maximize Minimum Intensity for 15 Sources Source Locations

Equator View, Longitude 180 Deg



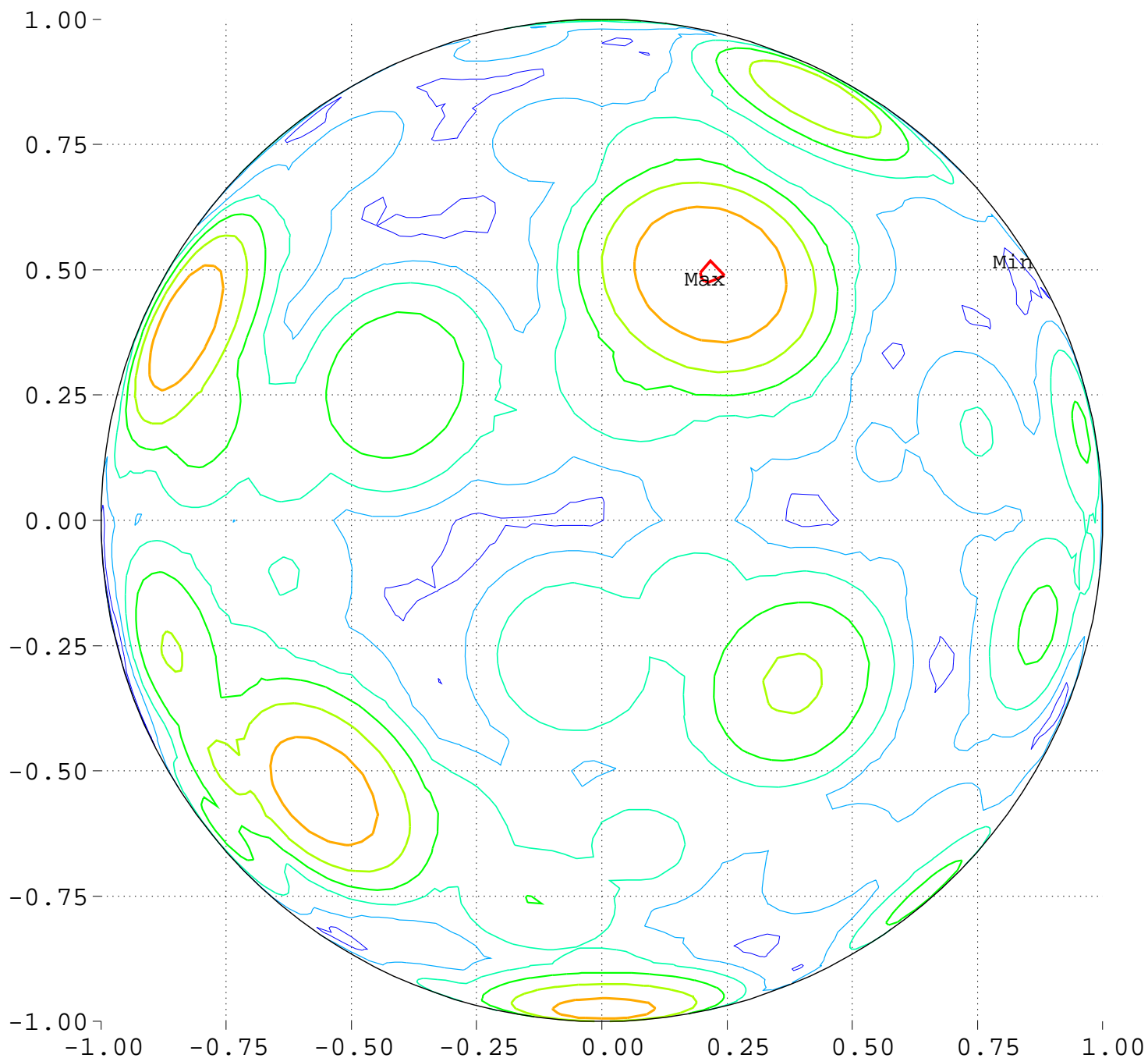
Minimum = 0.00 Maximum = 100.00

Contours around Nadirs of Sources



Maximize Minimum Intensity for 15 Sources
Lowest Intensity: 3.632252

Equator View, Longitude 180 Deg



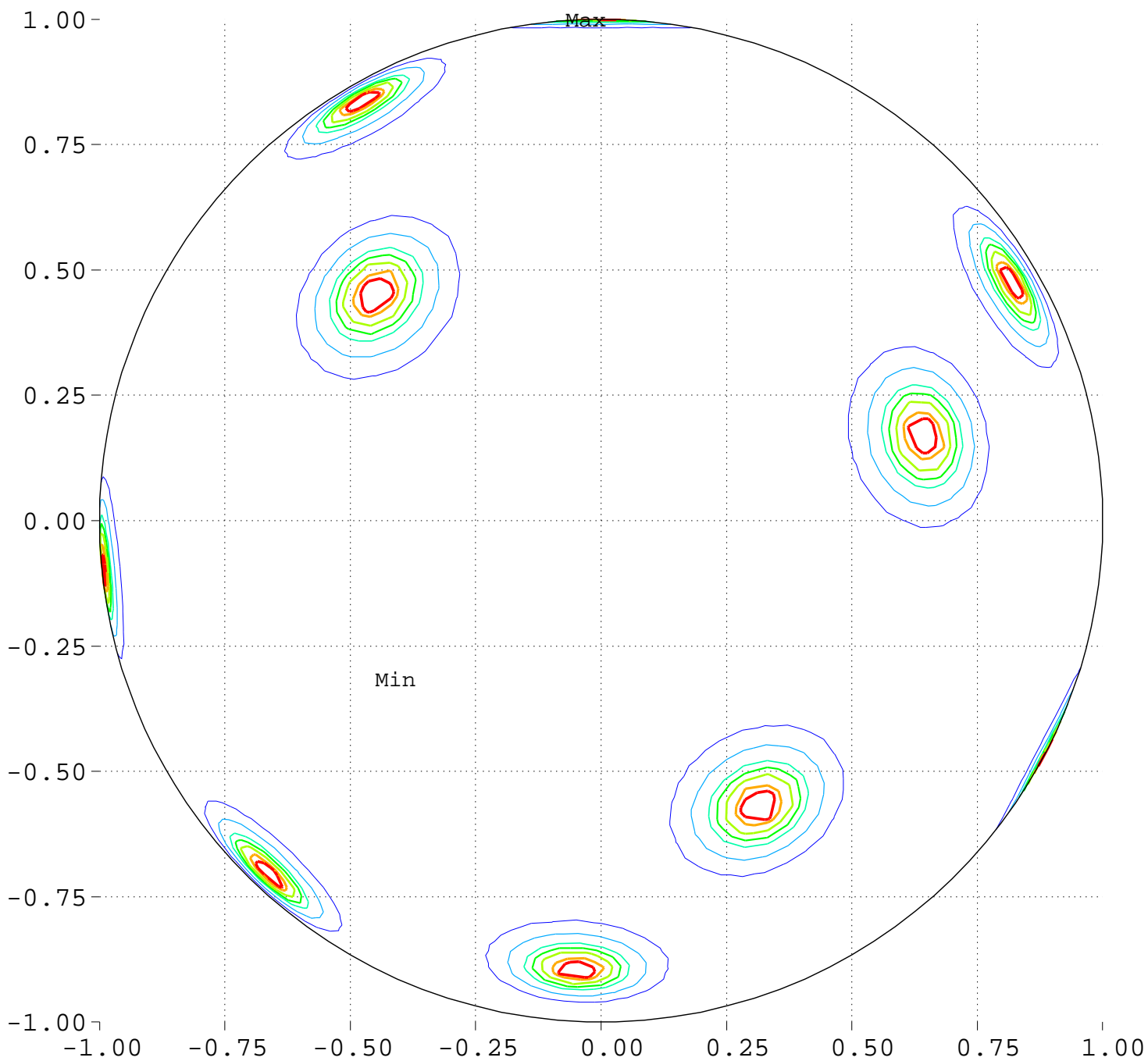
Minimum = 96.95 Maximum = 105.04

Contour Levels of Scaled Intensity

<u>97.5000</u>	<u>98.7500</u>	<u>100.0000</u>	<u>101.2500</u>	<u>102.5000</u>
<u>103.7500</u>	<u>105.0000</u>			

Maximize Minimum Intensity for 15 Sources Source Locations

Equator View, Longitude 270 Deg



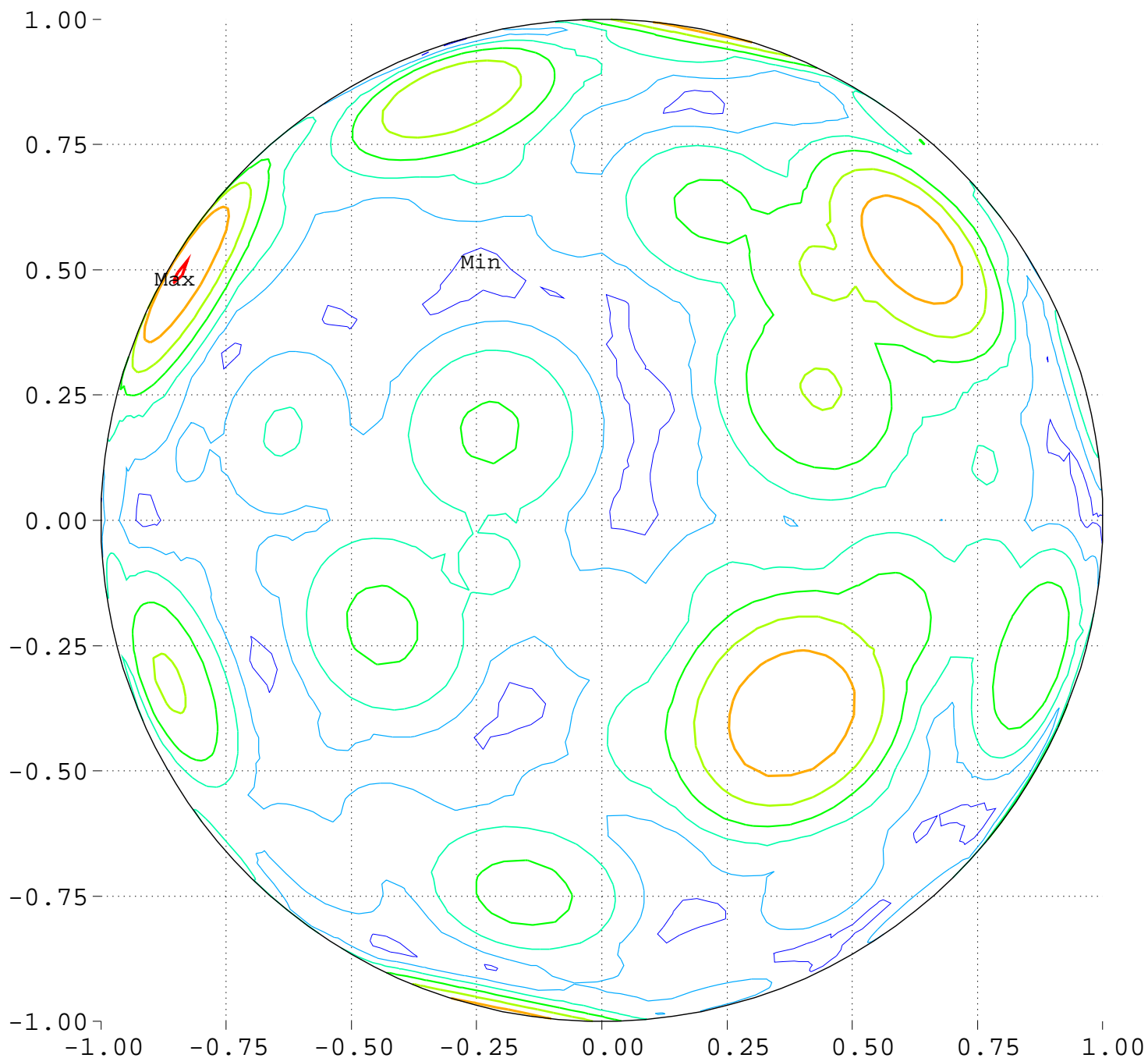
Minimum = 0.00 Maximum = 100.00

Contours around Nadirs of Sources



Maximize Minimum Intensity for 15 Sources
Lowest Intensity: 3.632252

Equator View, Longitude 270 Deg



Minimum = 96.95 Maximum = 105.04

Contour Levels of Scaled Intensity

97.5000 98.7500 100.0000 101.2500 102.5000
103.7500 105.0000