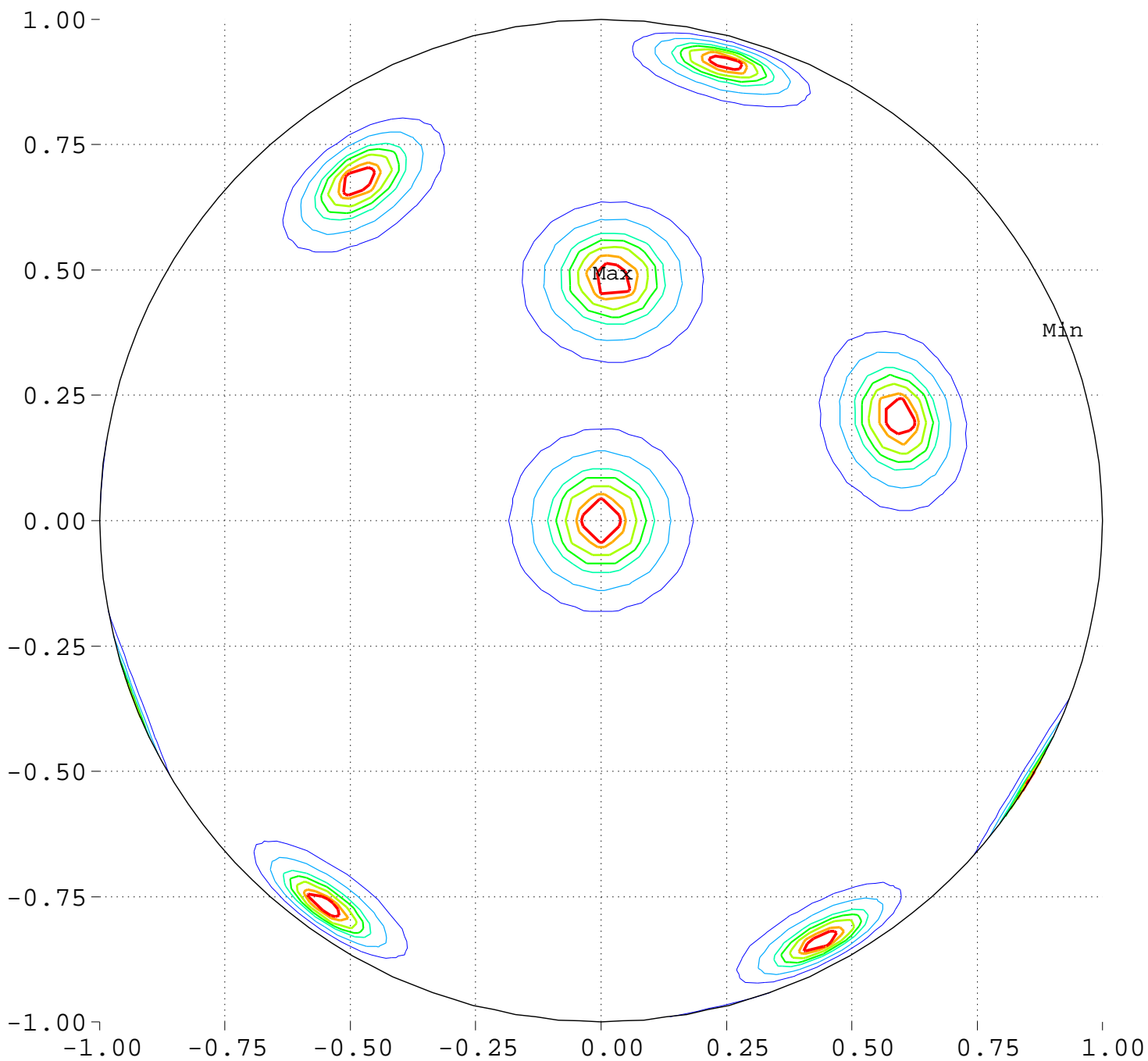


Maximize Minimum Intensity for 17 Sources Source Locations

North Pole, 0 Deg = Right, 90 Deg = Top



Minimum = 0.00 Maximum = 100.00

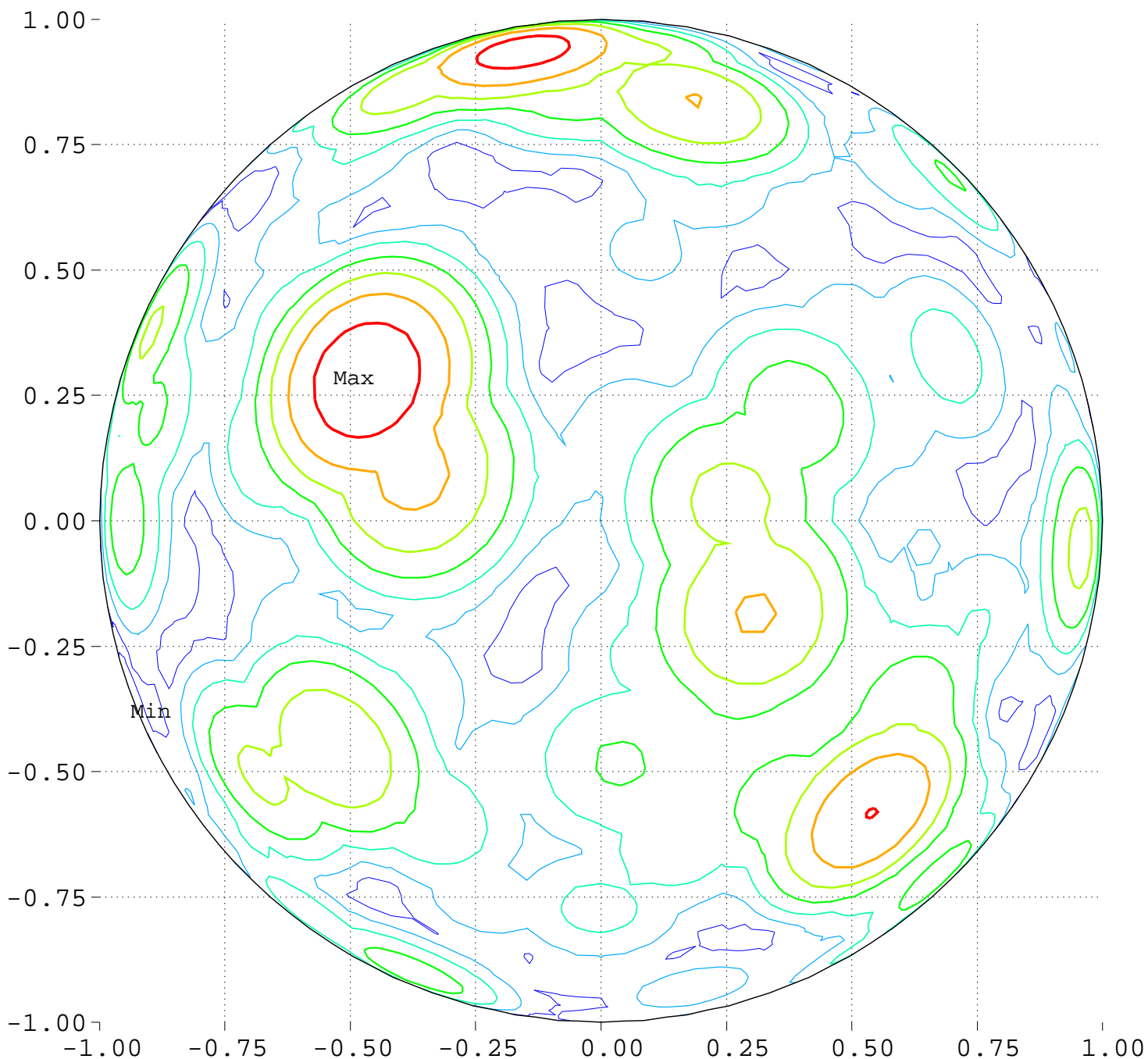
Contours around Nadirs of Sources



Maximize Minimum Intensity for 17 Sources

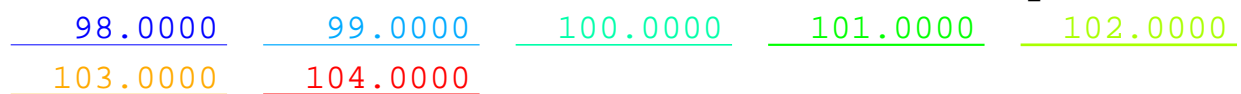
Lowest Intensity: 4.131690

North Pole, 0 Deg = Right, 90 Deg = Top



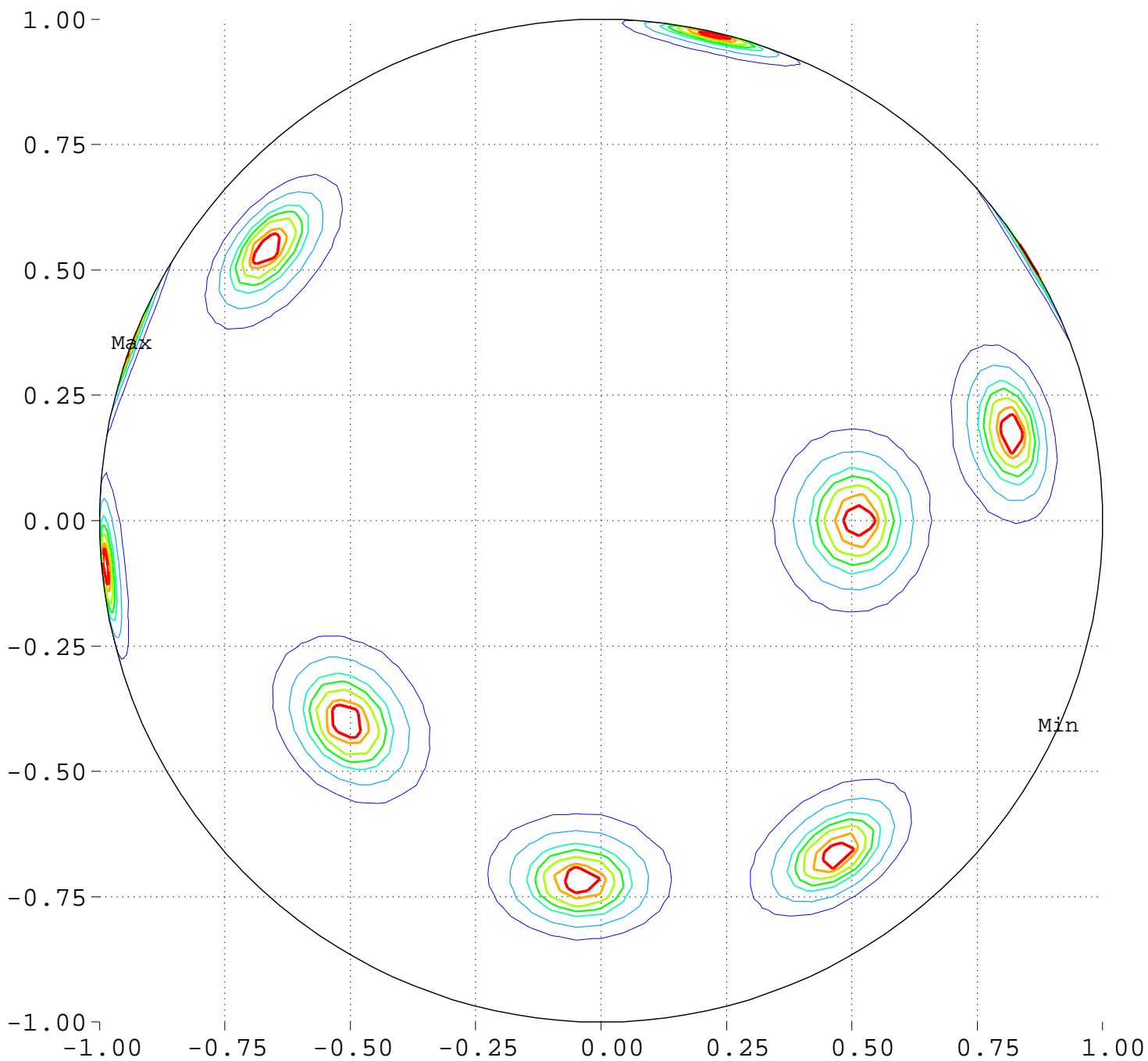
Minimum = 97.26 Maximum = 104.76

Contour Levels of Scaled Intensity



Maximize Minimum Intensity for 17 Sources Source Locations

South Pole, 0 Deg = Right, 270 Deg = Top



Minimum = 0.00 Maximum = 100.00

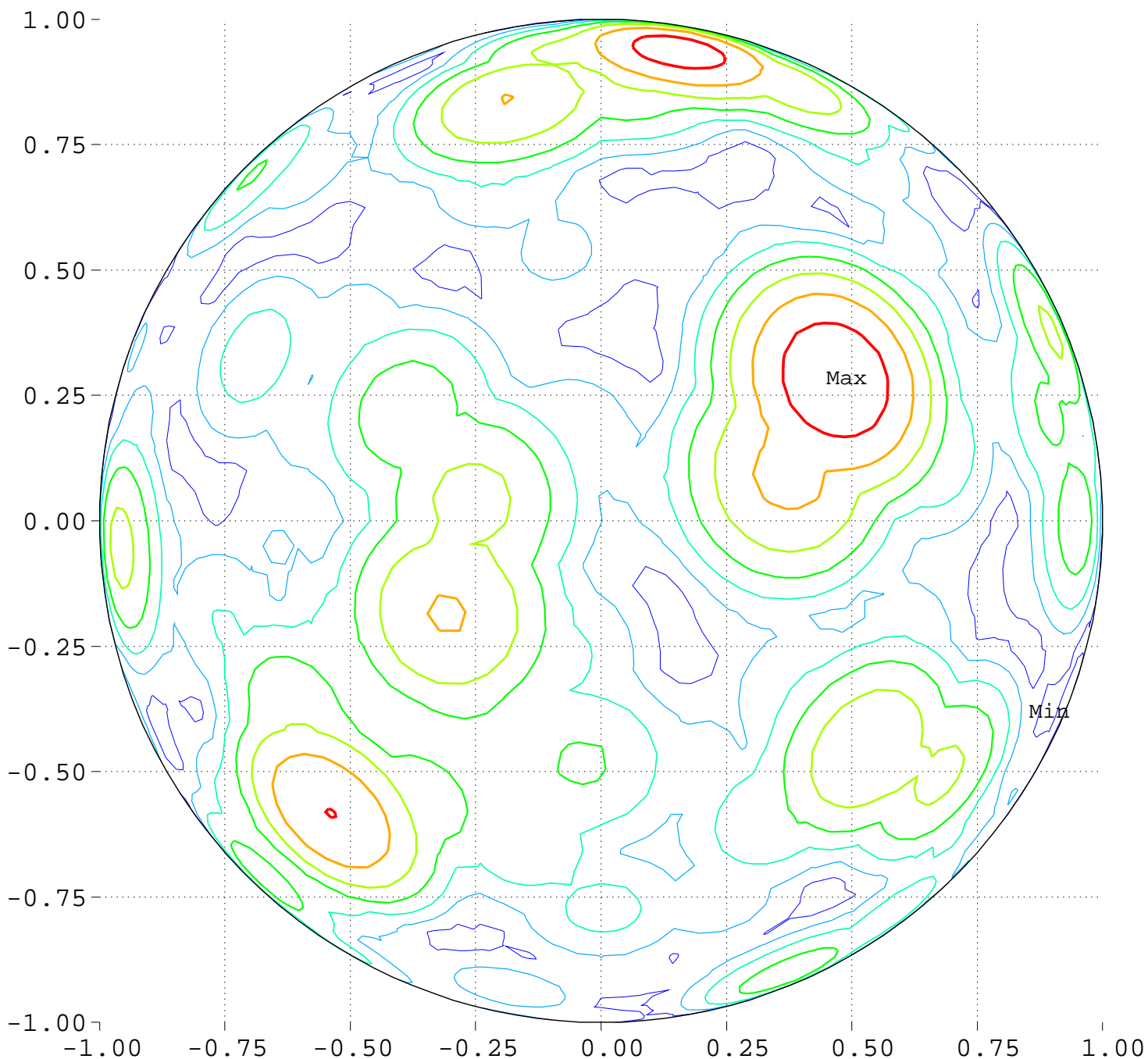
Contours around Nadirs of Sources



Maximize Minimum Intensity for 17 Sources

Lowest Intensity: 4.131690

South Pole, 0 Deg = Right, 270 Deg = Top



Minimum = 97.26 Maximum = 104.75

Contour Levels of Scaled Intensity

