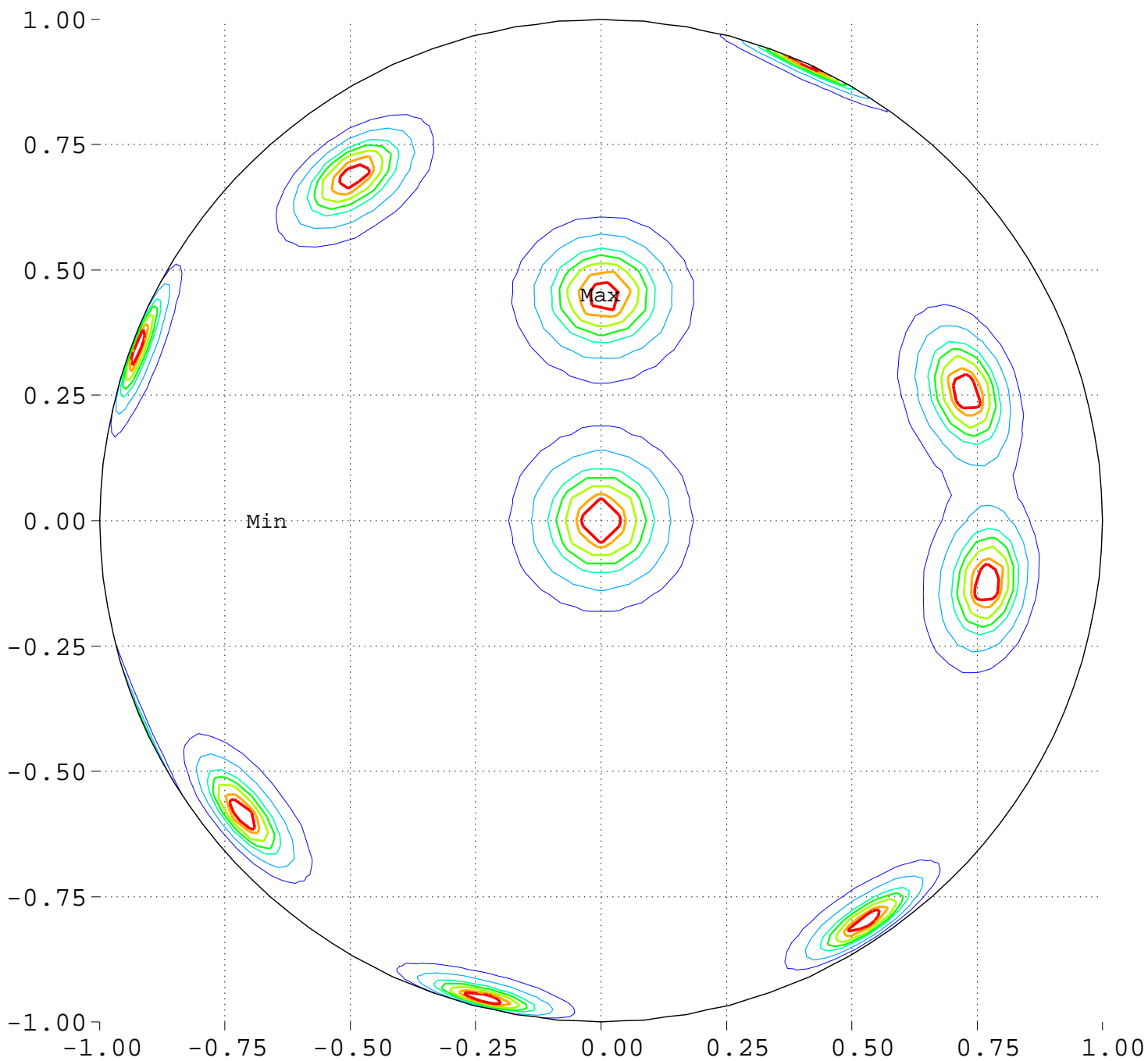


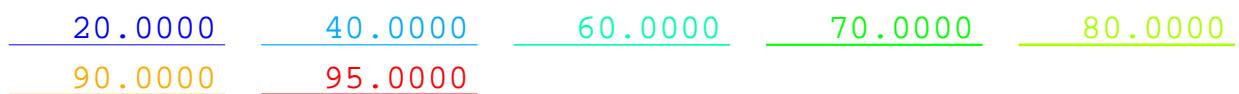
# Maximize Minimum Intensity for 19 Sources Source Locations

North Pole, 0 Deg = Right, 90 Deg = Top



Minimum = 0.00      Maximum = 100.00

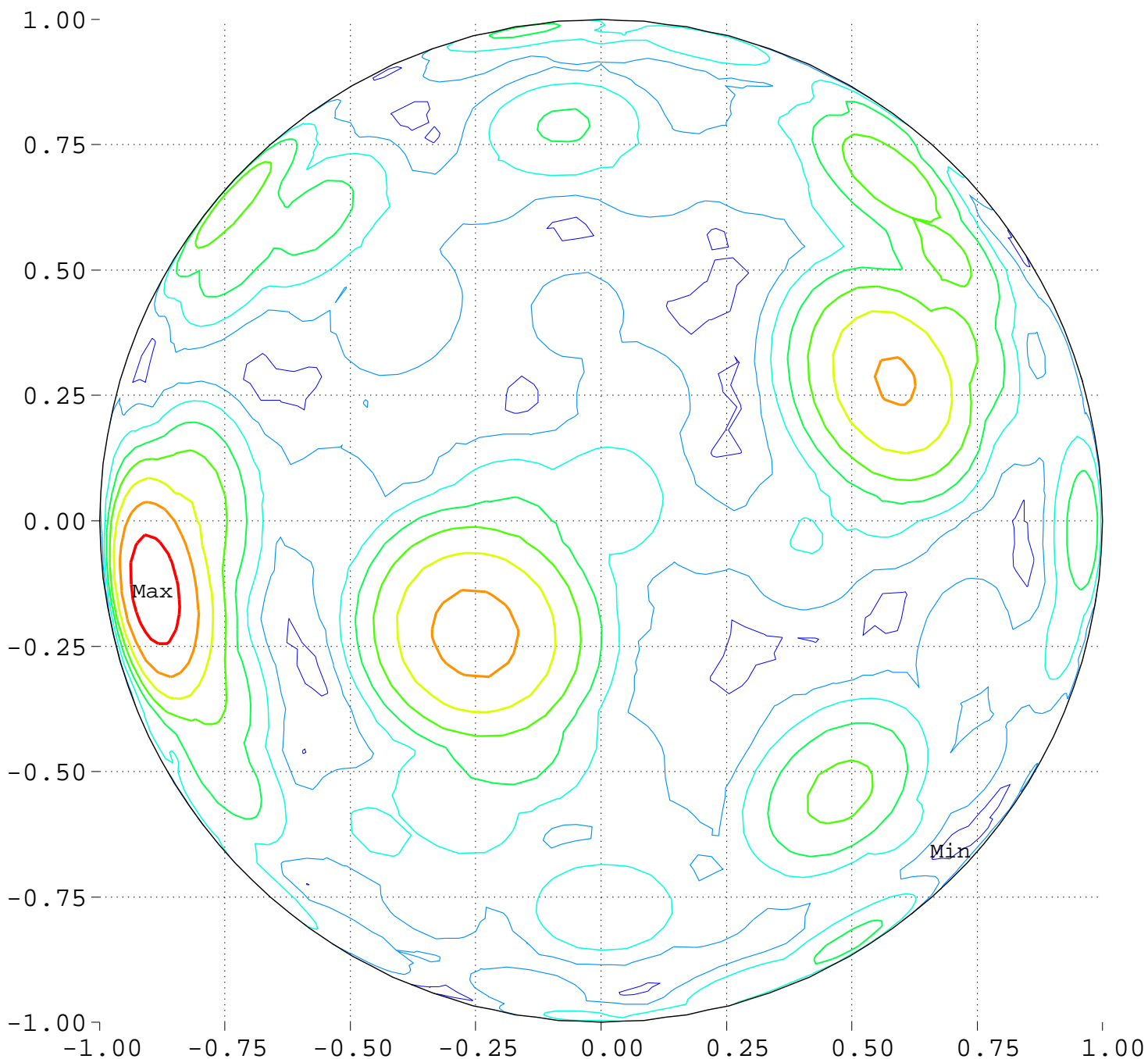
Contours around Nadirs of Sources



# Maximize Minimum Intensity for 19 Sources

Lowest Intensity: 4.630567

North Pole, 0 Deg = Right, 90 Deg = Top



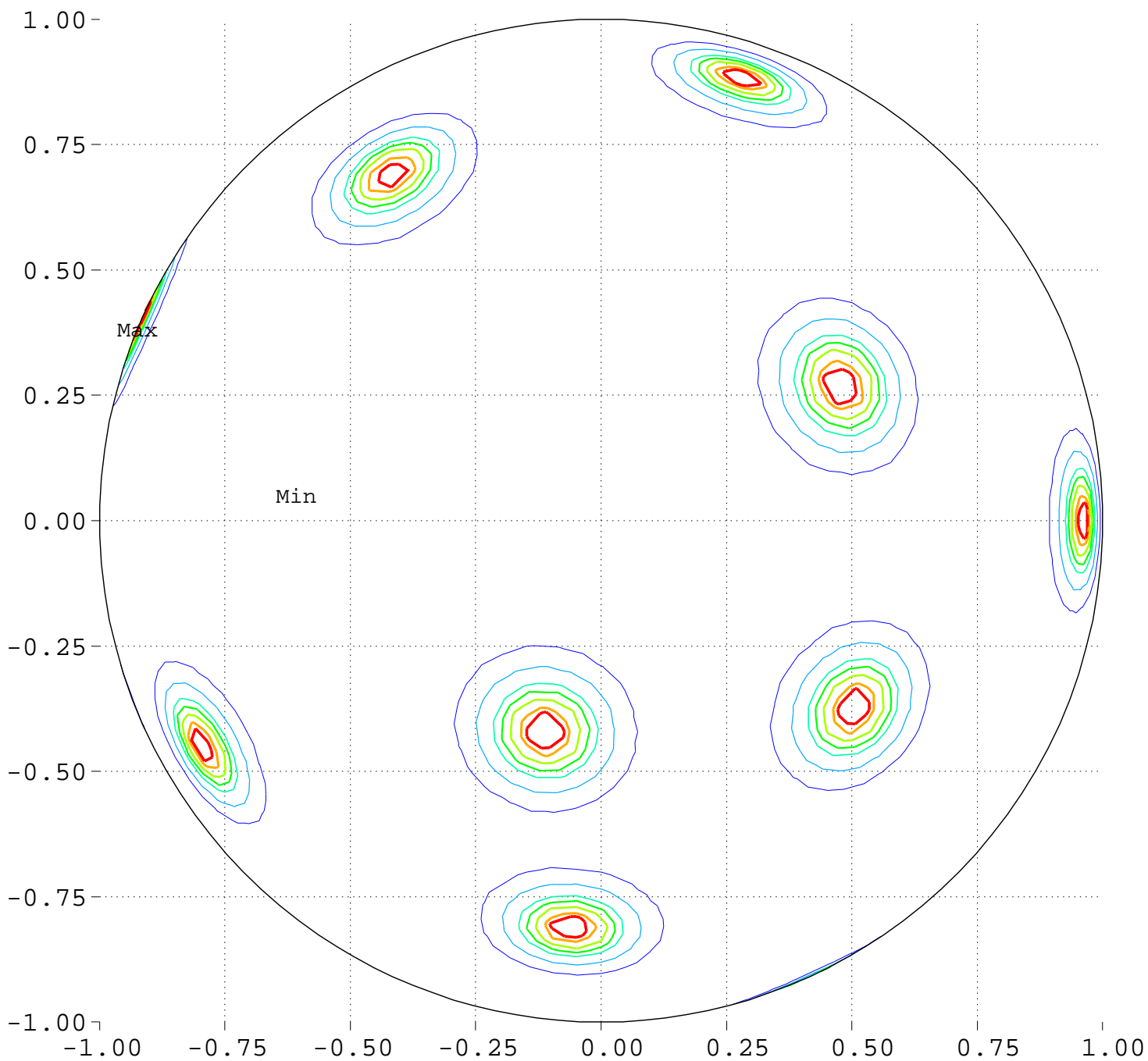
Minimum = 97.54      Maximum = 105.66

Contour Levels of Scaled Intensity

<u>98.0000</u>	<u>99.0000</u>	<u>100.0000</u>	<u>101.0000</u>	<u>102.0000</u>
<u>103.0000</u>	<u>104.0000</u>	<u>105.0000</u>		

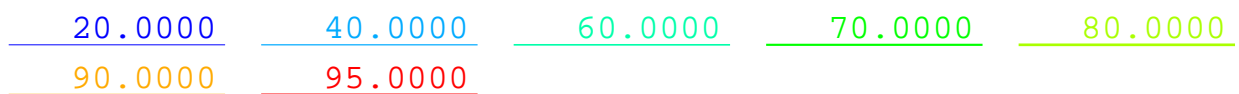
# Maximize Minimum Intensity for 19 Sources Source Locations

South Pole, 0 Deg = Right, 270 Deg = Top



Minimum = 0.00      Maximum = 100.00

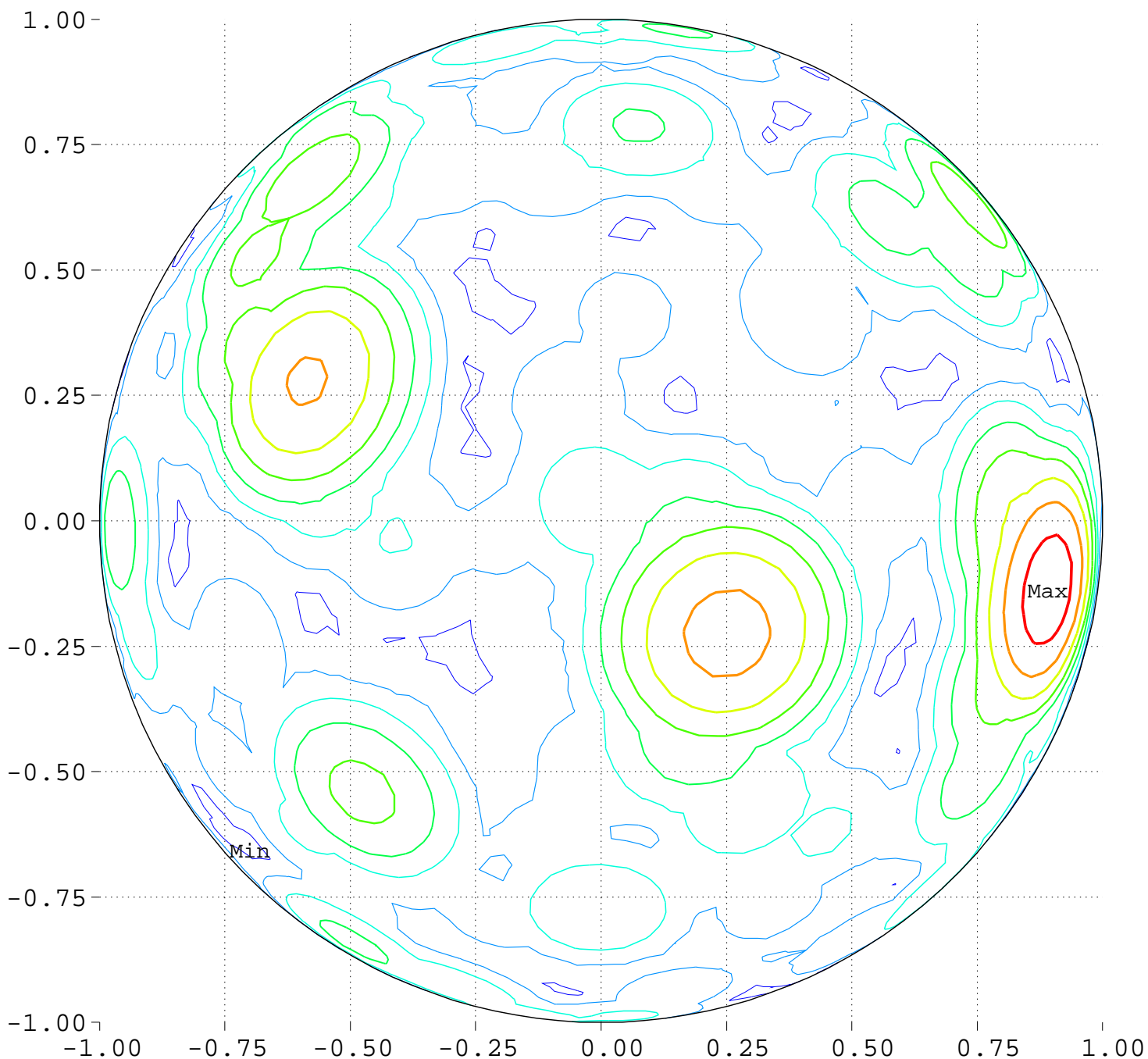
Contours around Nadirs of Sources



# Maximize Minimum Intensity for 19 Sources

Lowest Intensity: 4.630567

South Pole, 0 Deg = Right, 270 Deg = Top



Minimum = 97.54      Maximum = 105.66

Contour Levels of Scaled Intensity

