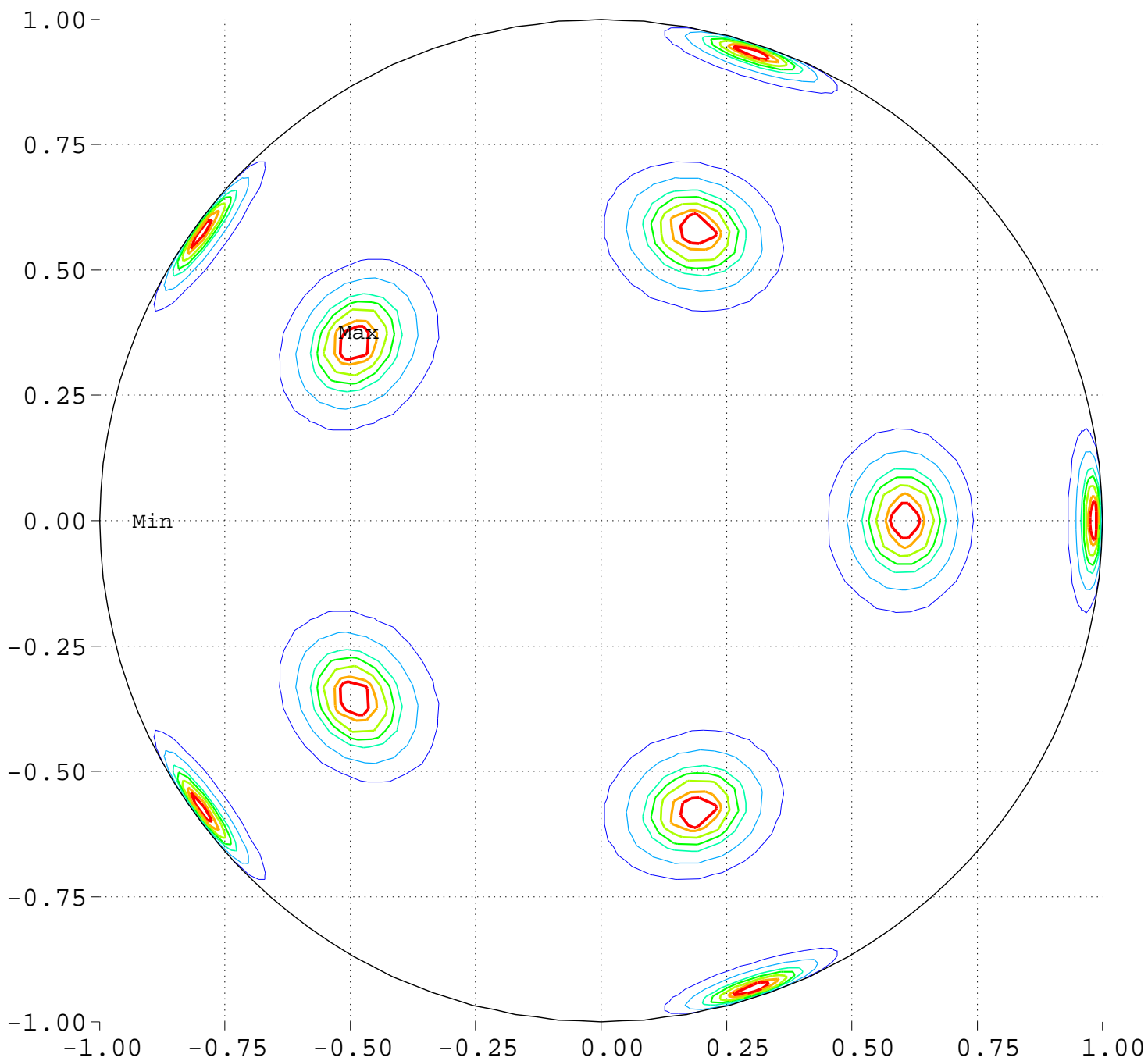


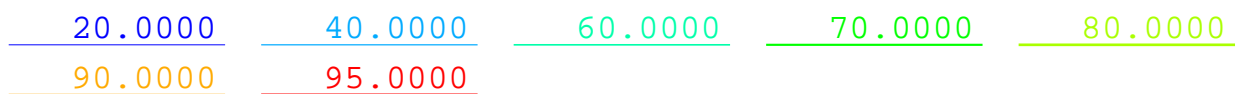
Maximize Minimum Intensity for 20 Sources Source Locations

North Pole, 0 Deg = Right, 90 Deg = Top



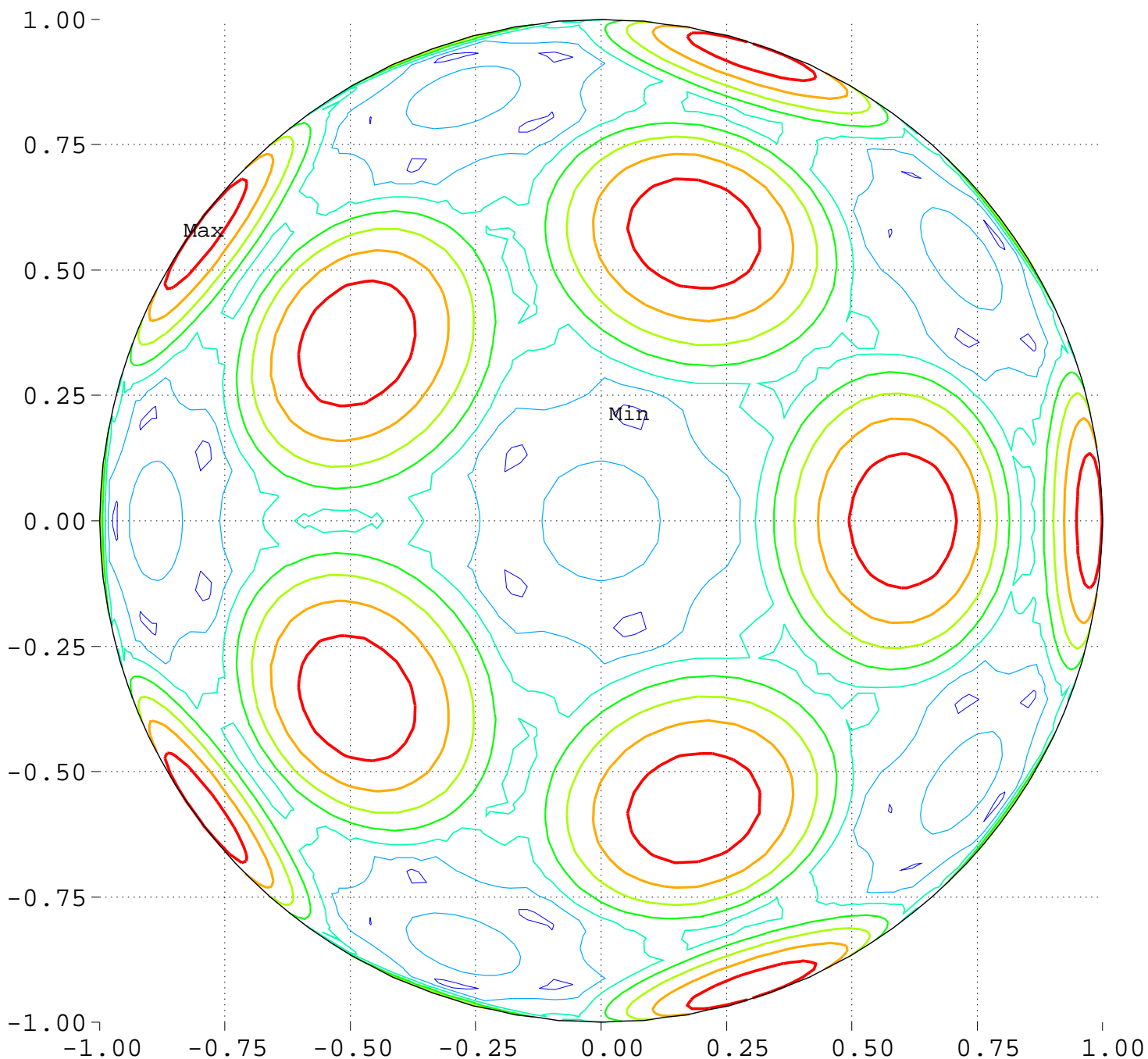
Minimum = 0.00 Maximum = 100.00

Contours around Nadirs of Sources



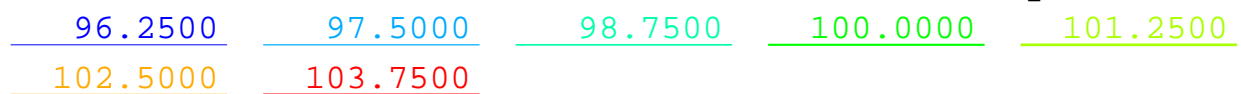
Maximize Minimum Intensity for 20 Sources
Lowest Intensity: 4.779982

North Pole, 0 Deg = Right, 90 Deg = Top



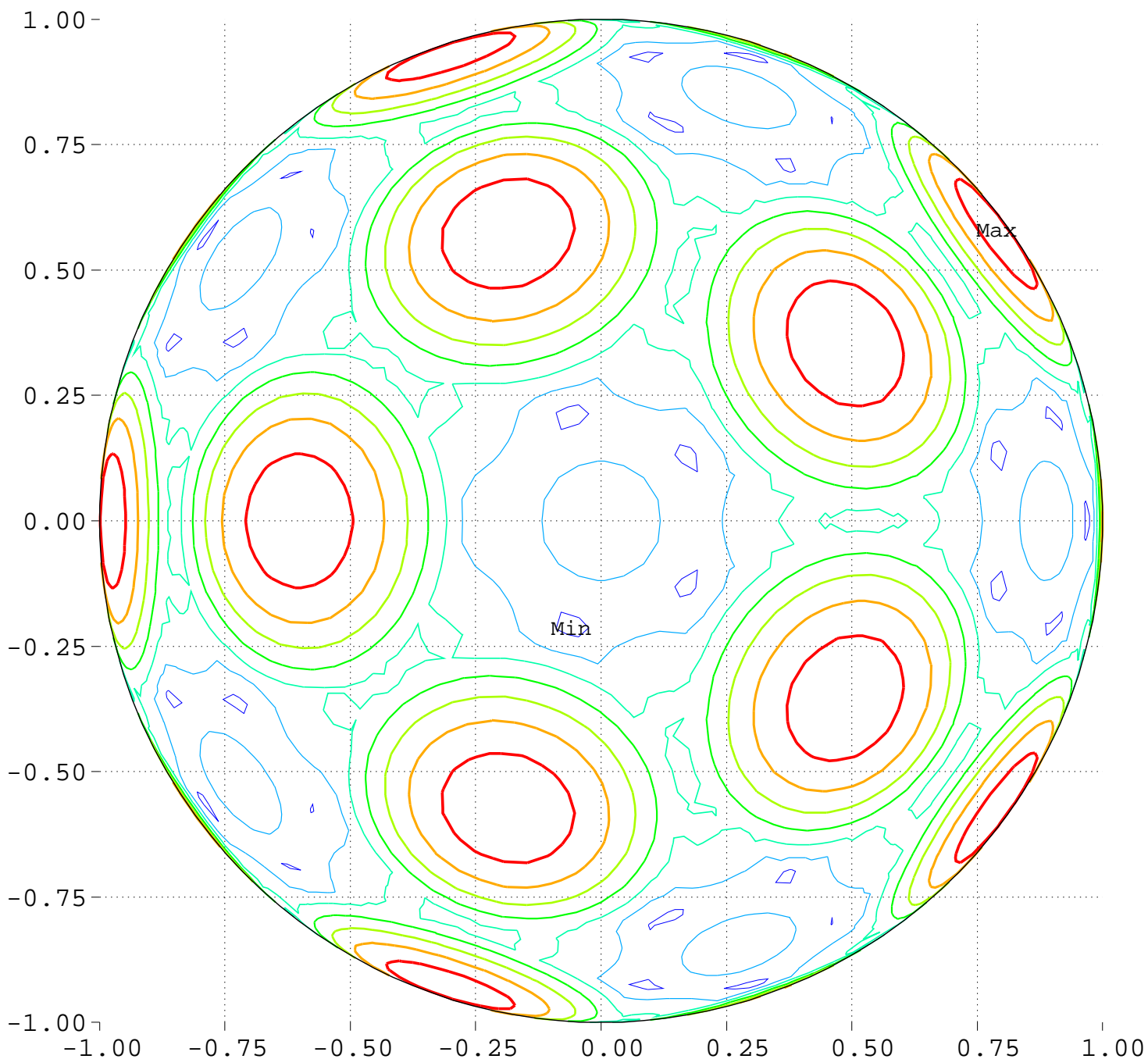
Minimum = 95.79 Maximum = 104.72

Contour Levels of Scaled Intensity



Maximize Minimum Intensity for 20 Sources
Lowest Intensity: 4.779982

South Pole, 0 Deg = Right, 270 Deg = Top



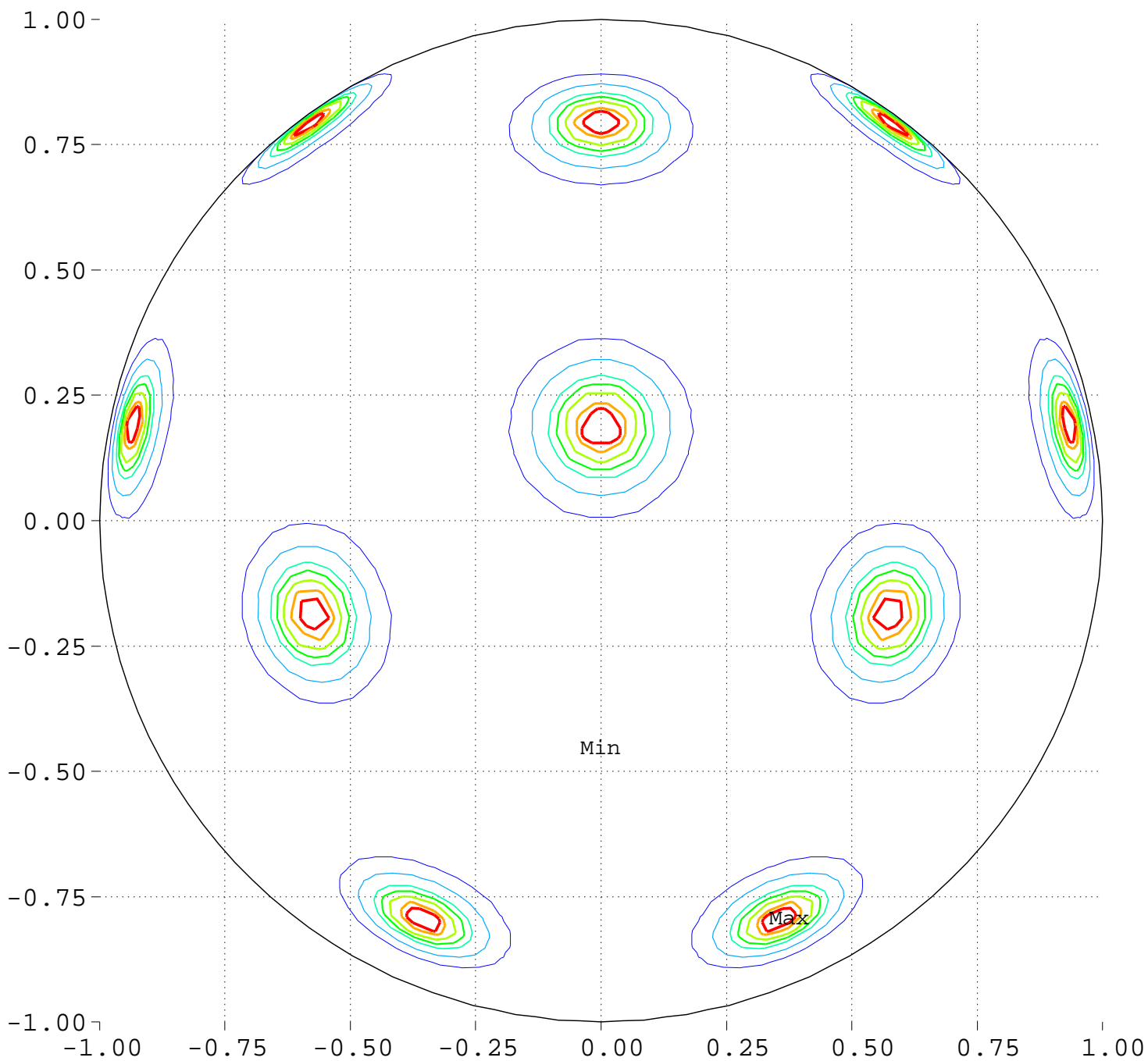
Minimum = 95.79 Maximum = 104.72

Contour Levels of Scaled Intensity

96.2500 97.5000 98.7500 100.0000 101.2500
102.5000 103.7500

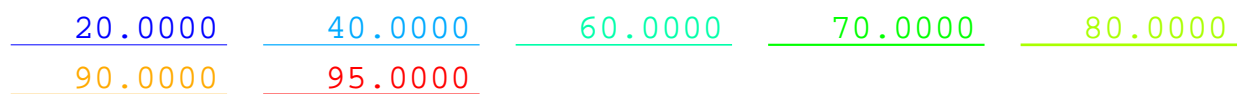
Maximize Minimum Intensity for 20 Sources Source Locations

Equator View, Longitude 0 Deg



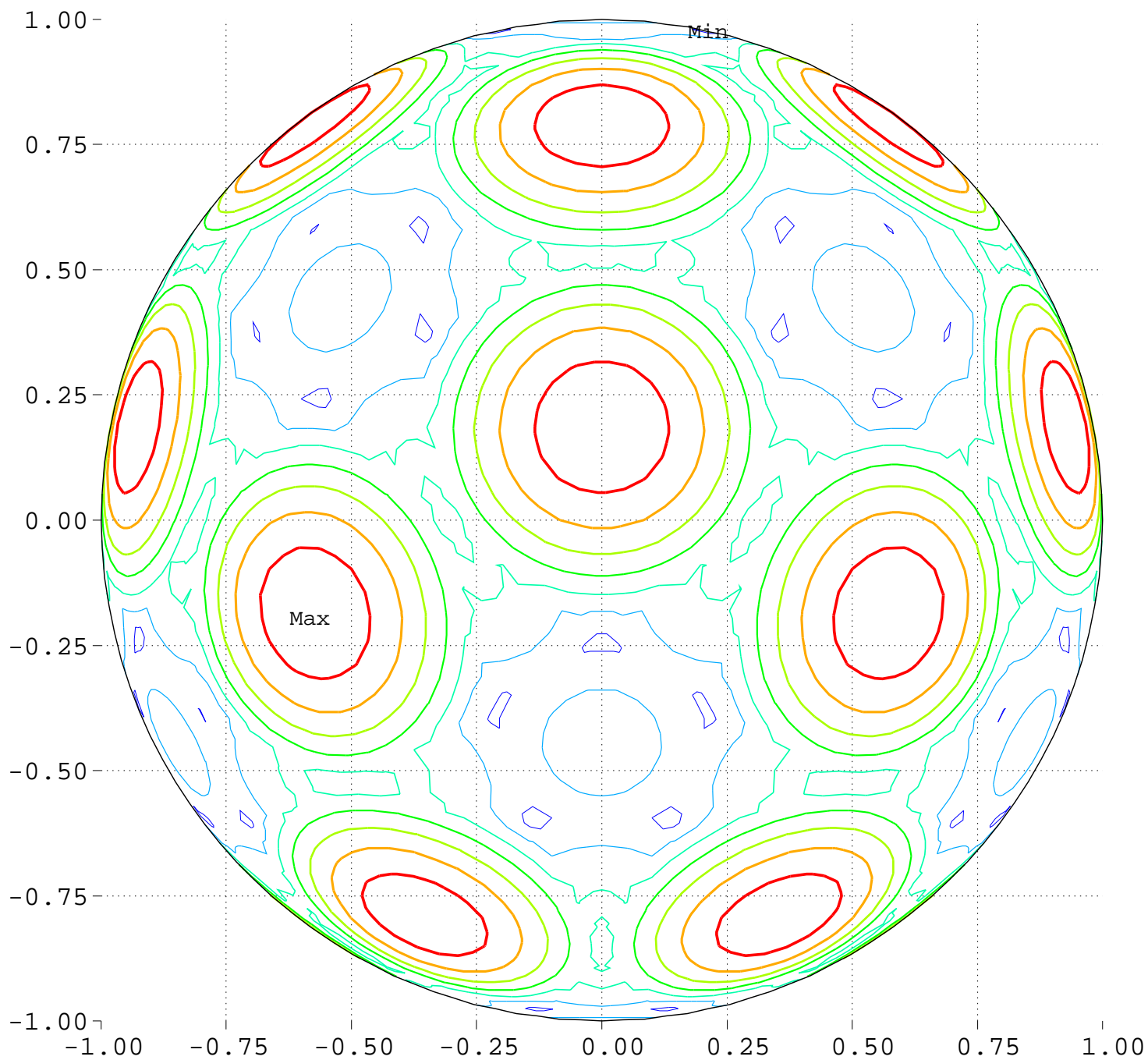
Minimum = 0.00 Maximum = 100.00

Contours around Nadirs of Sources



Maximize Minimum Intensity for 20 Sources
Lowest Intensity: 4.779982

Equator View, Longitude 0 Deg



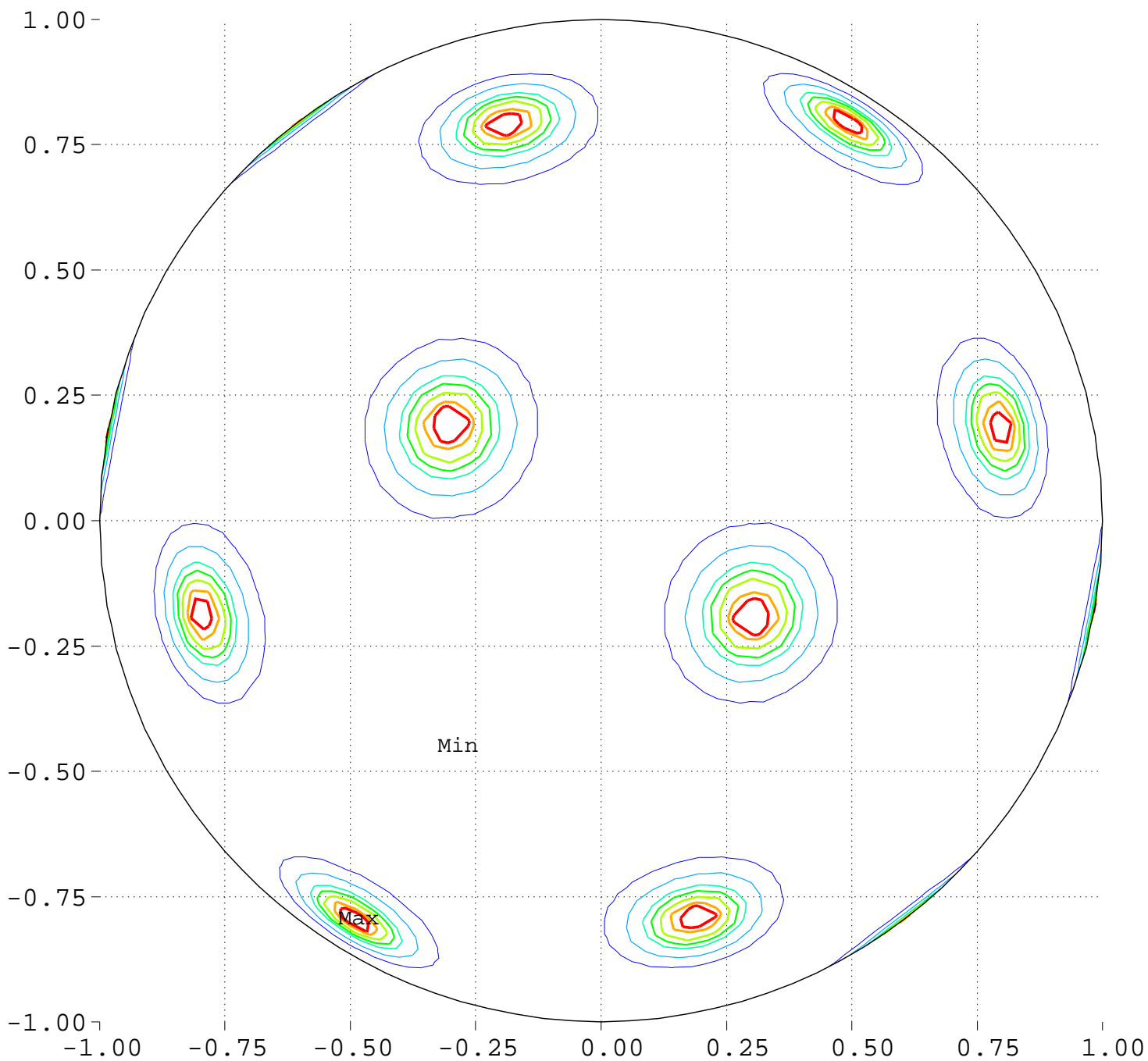
Minimum = 95.79 Maximum = 104.72

Contour Levels of Scaled Intensity

96.2500 97.5000 98.7500 100.0000 101.2500
102.5000 103.7500

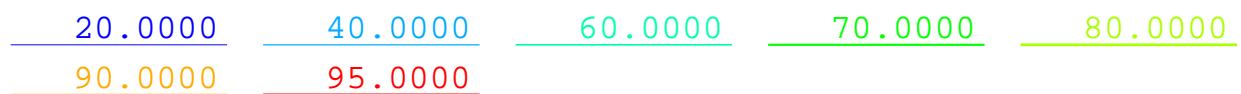
Maximize Minimum Intensity for 20 Sources Source Locations

Equator View, Longitude 90 Deg



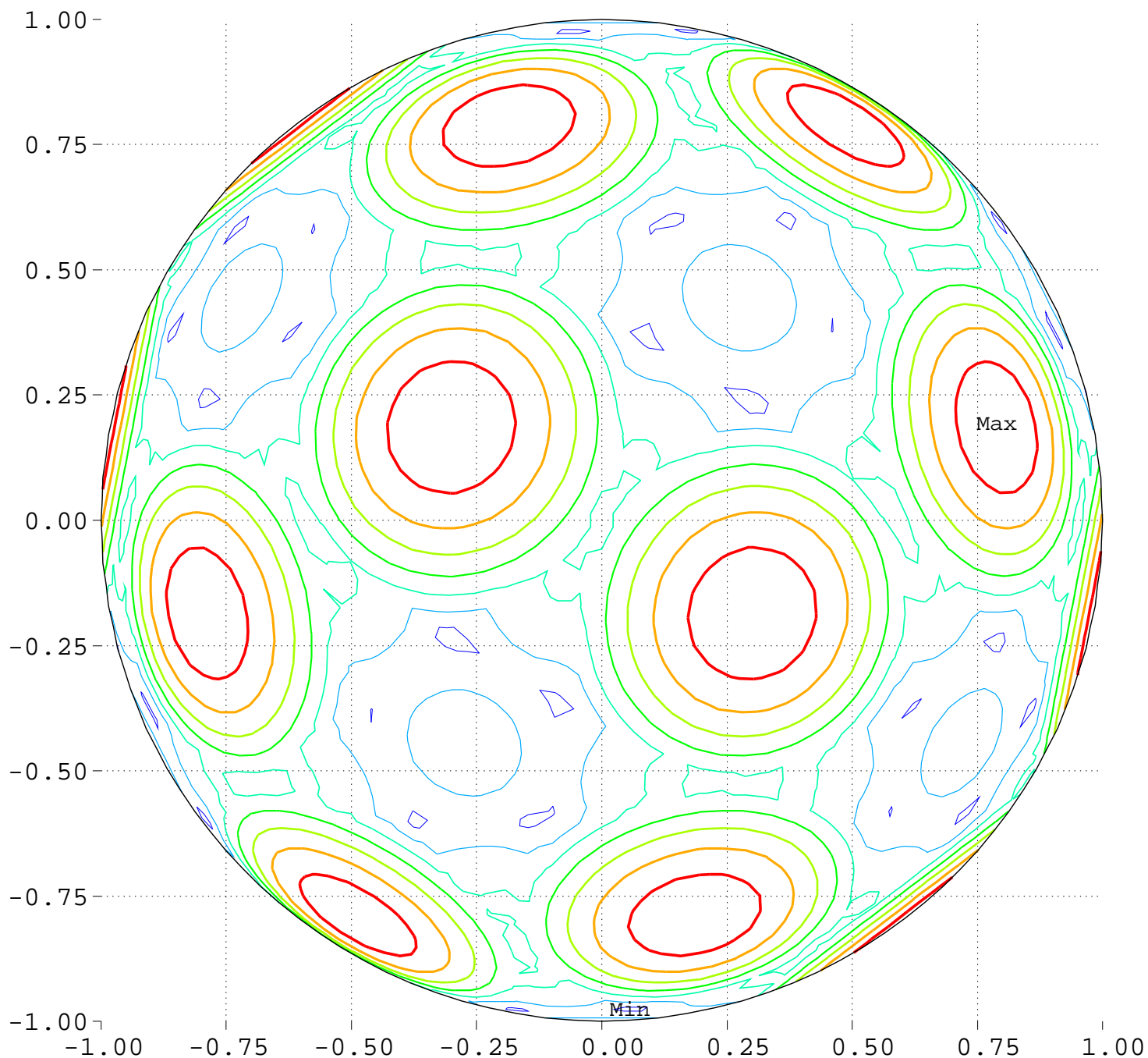
Minimum = 0.00 Maximum = 100.00

Contours around Nadirs of Sources



Maximize Minimum Intensity for 20 Sources
Lowest Intensity: 4.779982

Equator View, Longitude 90 Deg



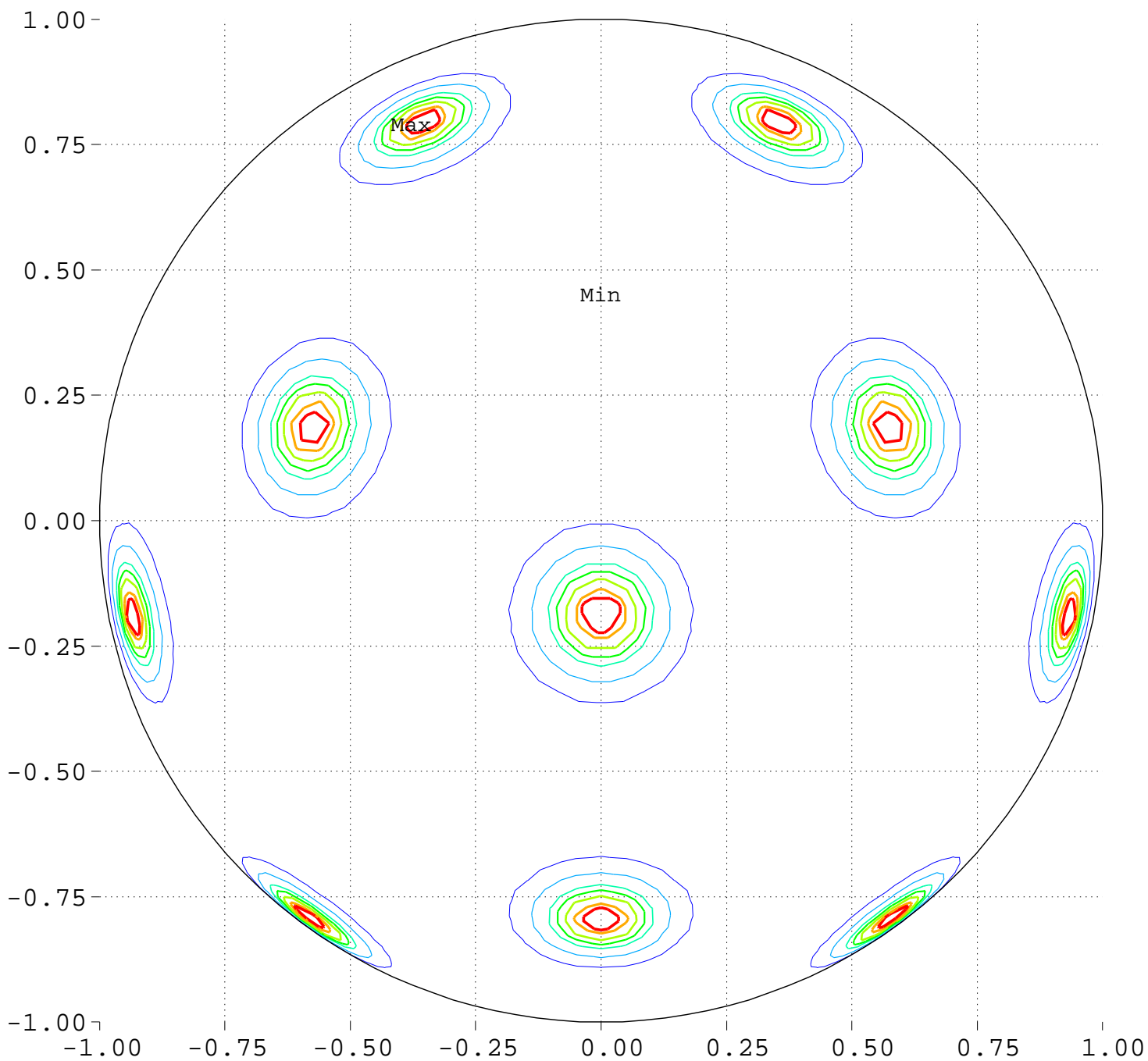
Minimum = 95.79 Maximum = 104.72

Contour Levels of Scaled Intensity

96.2500 97.5000 98.7500 100.0000 101.2500
102.5000 103.7500

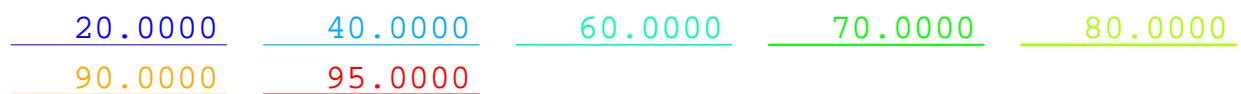
Maximize Minimum Intensity for 20 Sources Source Locations

Equator View, Longitude 180 Deg



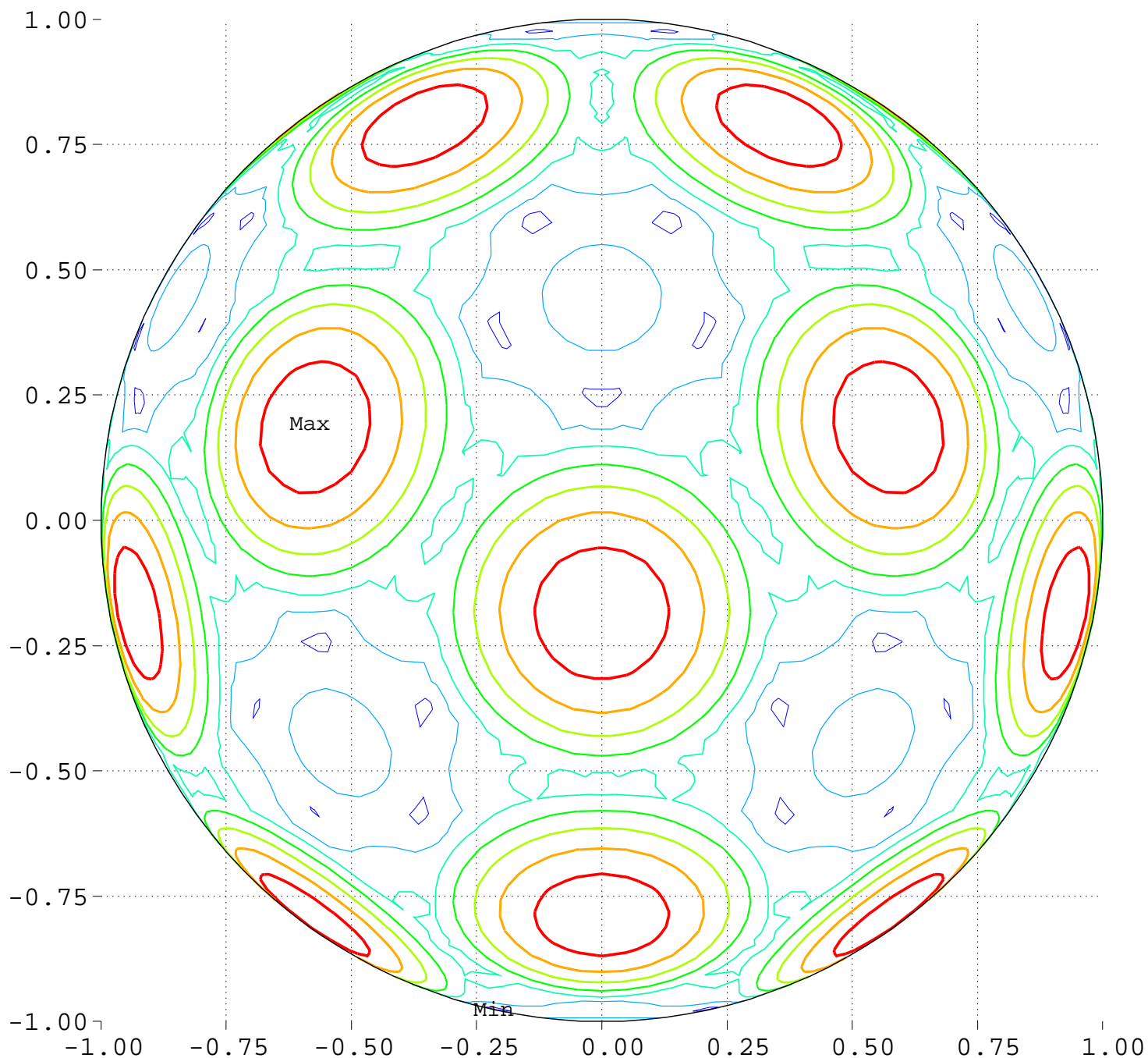
Minimum = 0.00 Maximum = 100.00

Contours around Nadirs of Sources



Maximize Minimum Intensity for 20 Sources
Lowest Intensity: 4.779982

Equator View, Longitude 180 Deg



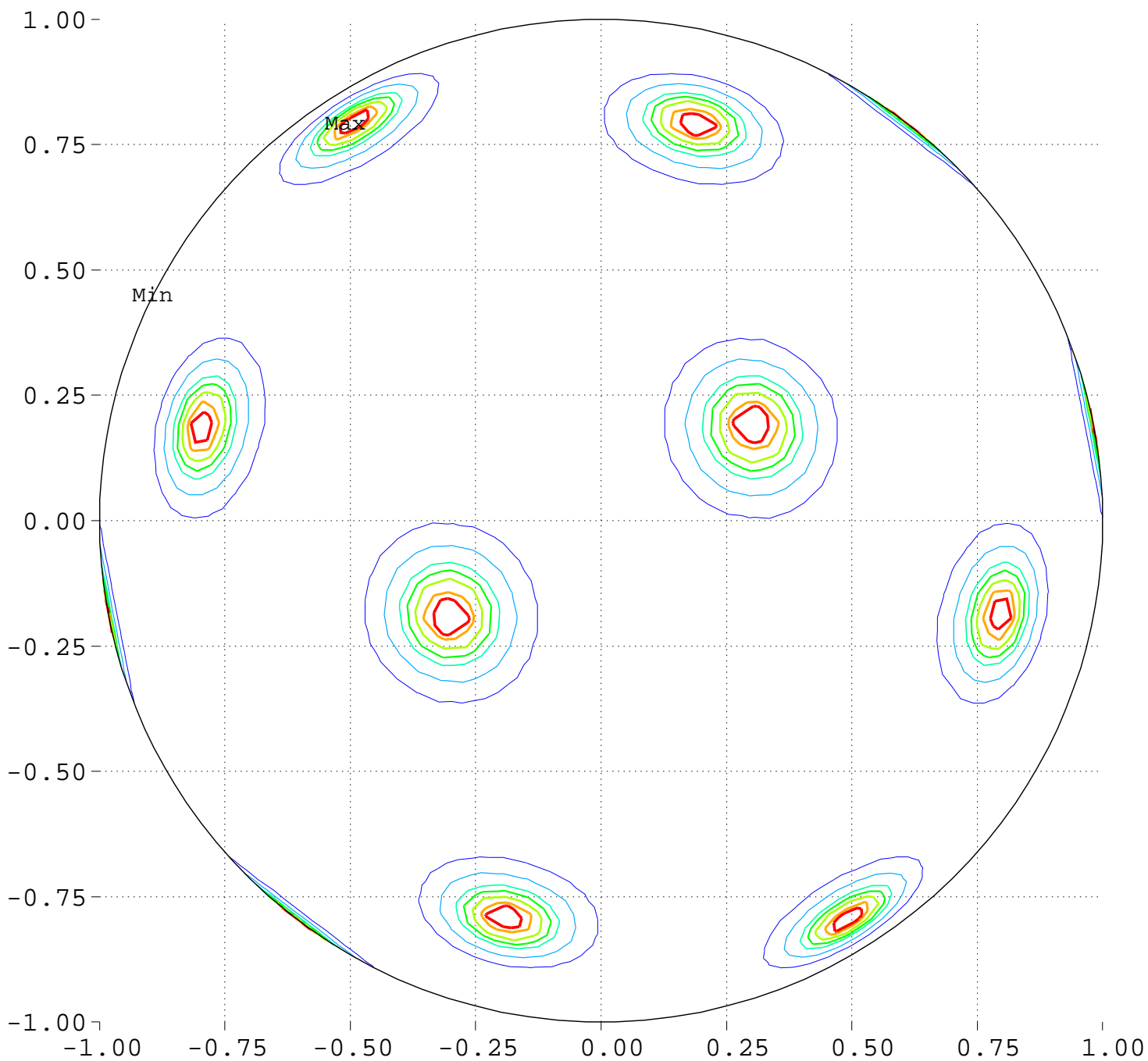
Minimum = 95.79 Maximum = 104.72

Contour Levels of Scaled Intensity

96.2500 97.5000 98.7500 100.0000 101.2500
102.5000 103.7500

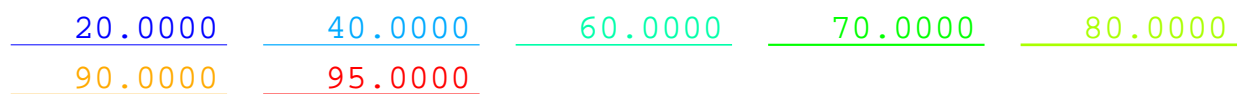
Maximize Minimum Intensity for 20 Sources Source Locations

Equator View, Longitude 270 Deg



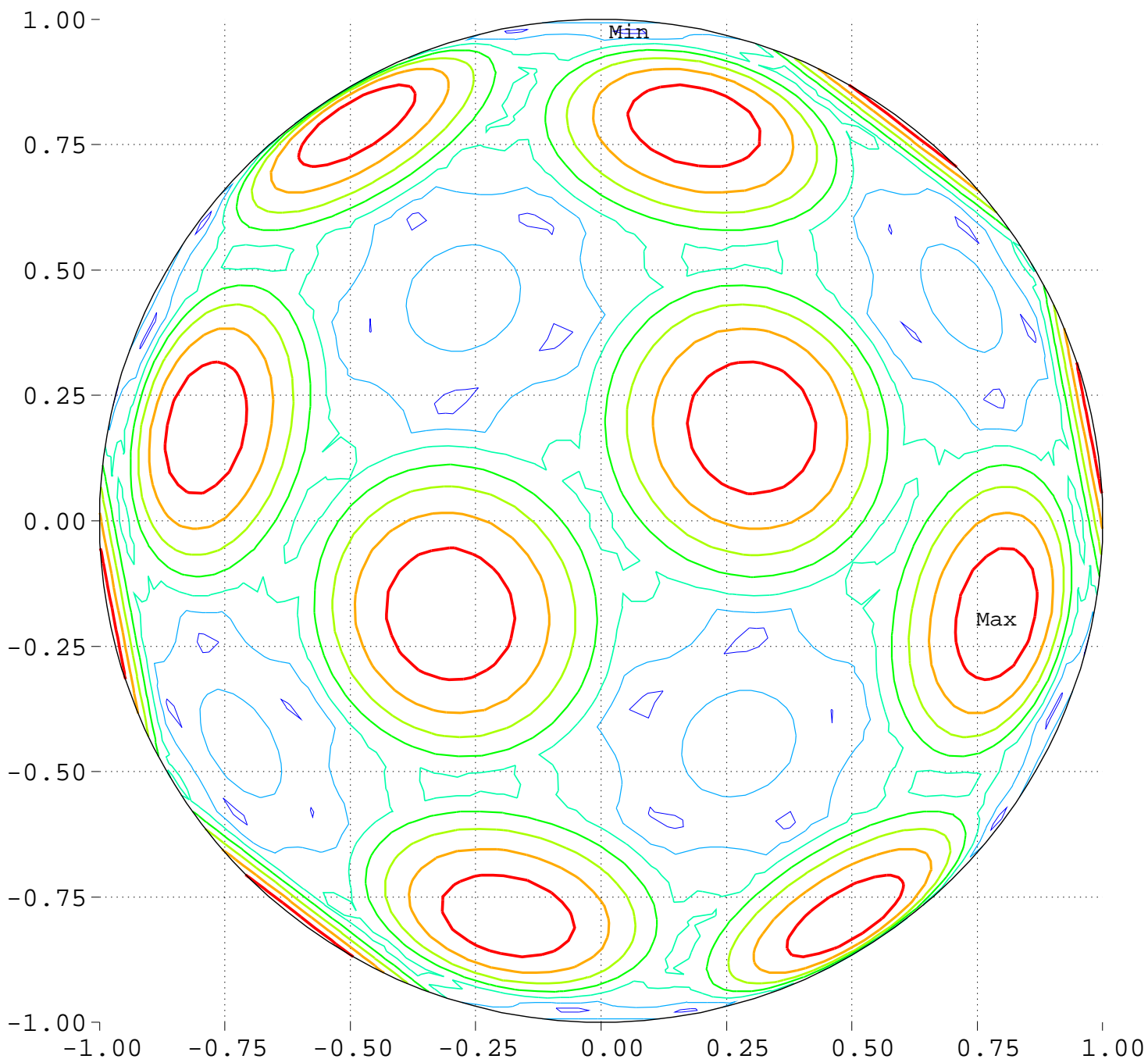
Minimum = 0.00 Maximum = 100.00

Contours around Nadirs of Sources



Maximize Minimum Intensity for 20 Sources
Lowest Intensity: 4.779982

Equator View, Longitude 270 Deg



Minimum = 95.79 Maximum = 104.72

Contour Levels of Scaled Intensity

96.2500 97.5000 98.7500 100.0000 101.2500
102.5000 103.7500