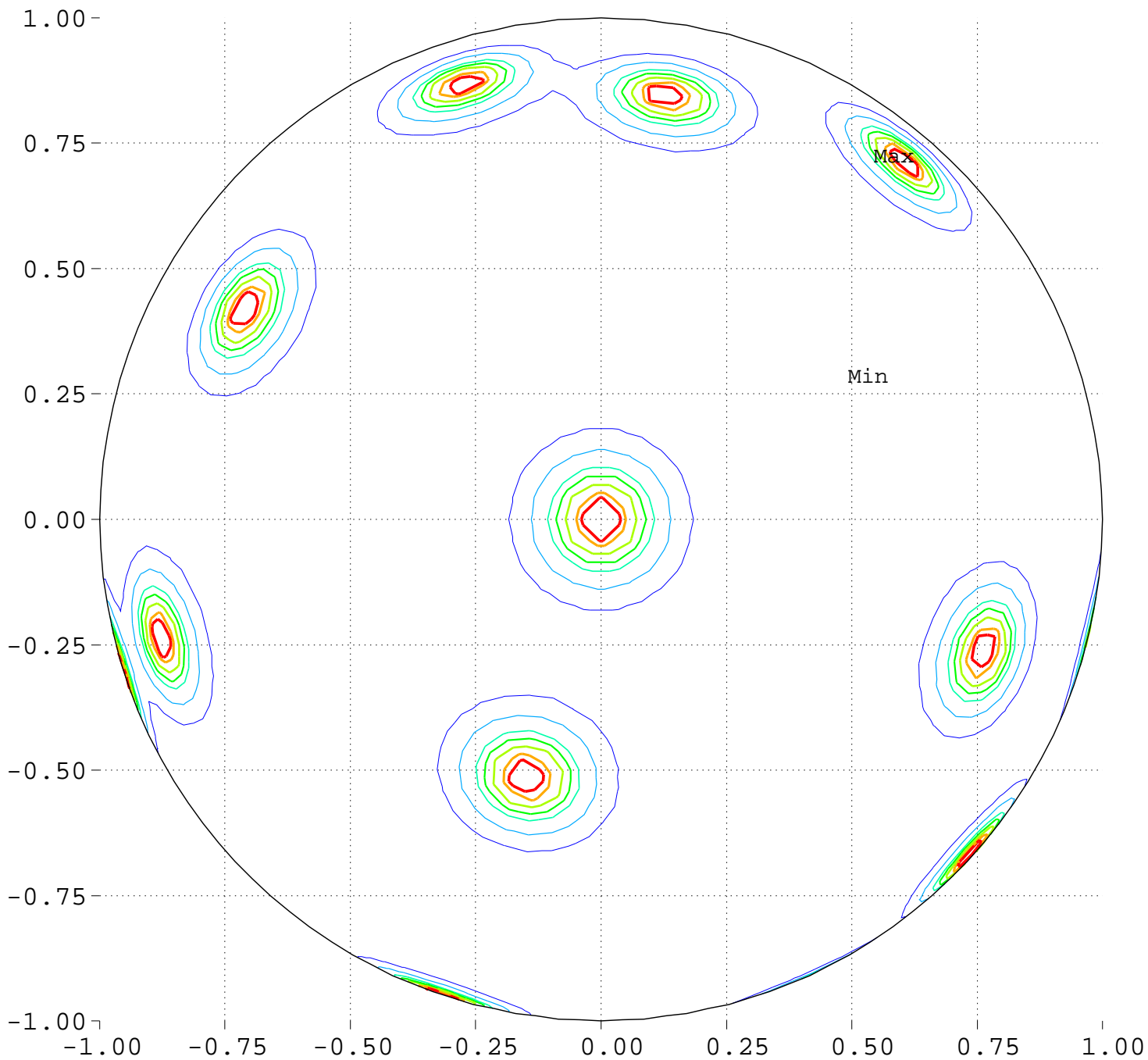


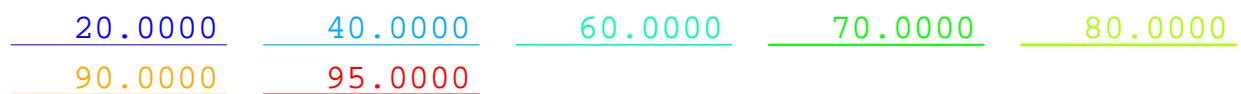
Maximize Minimum Intensity for 20 Sources Source Locations

North Pole, 0 Deg = Right, 90 Deg = Top



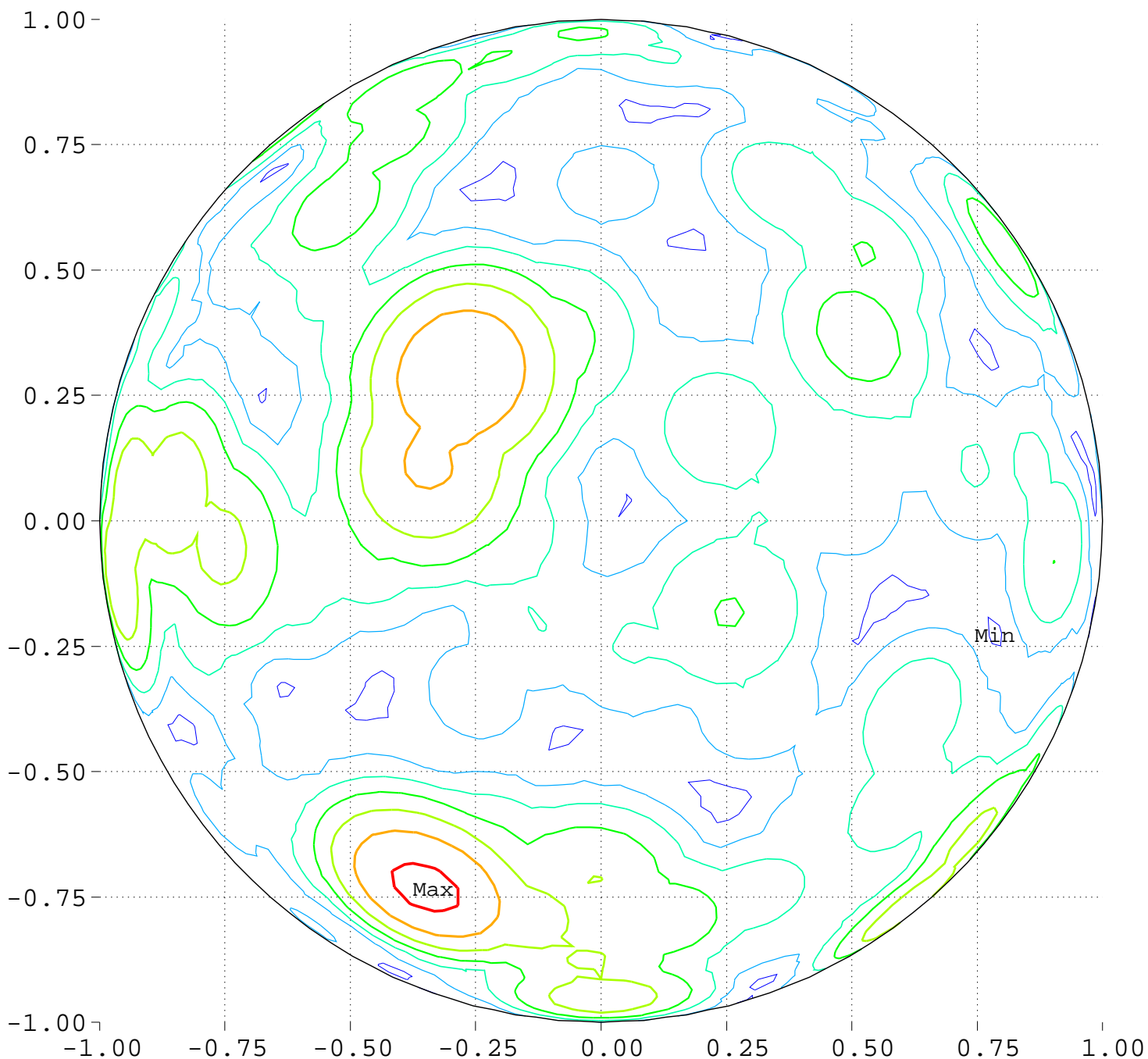
Minimum = 0.00 Maximum = 100.00

Contours around Nadirs of Sources



Maximize Minimum Intensity for 20 Sources
Lowest Intensity: 4.879836

North Pole, 0 Deg = Right, 90 Deg = Top



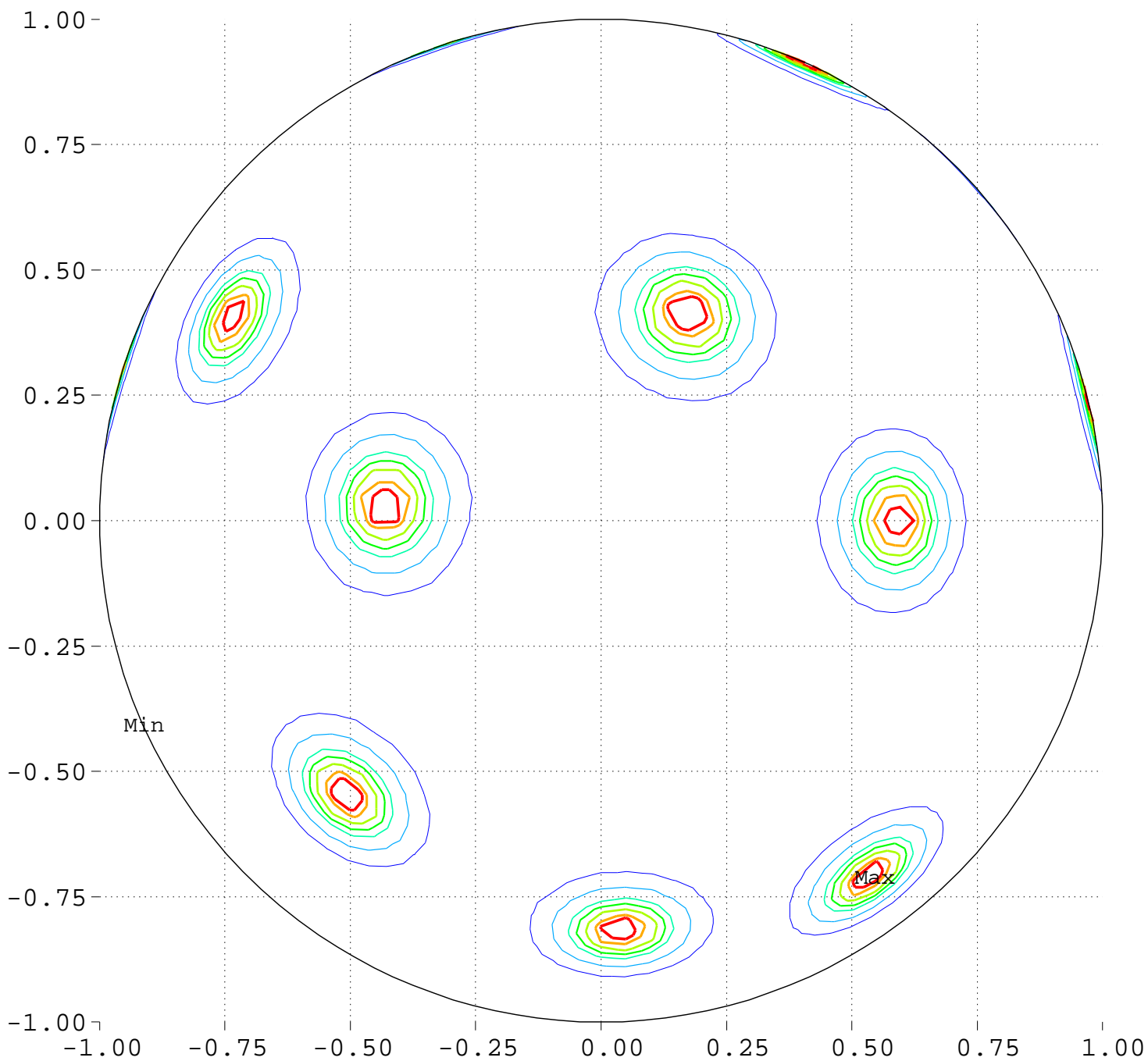
Minimum = 97.63 Maximum = 104.27

Contour Levels of Scaled Intensity

98.0000 99.0000 100.0000 101.0000 102.0000
103.0000 104.0000

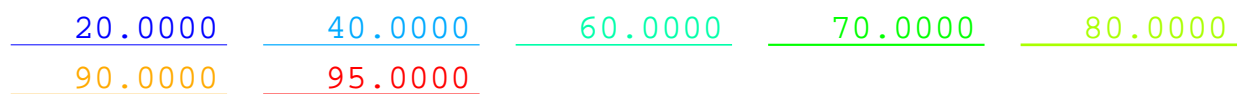
Maximize Minimum Intensity for 20 Sources Source Locations

South Pole, 0 Deg = Right, 270 Deg = Top



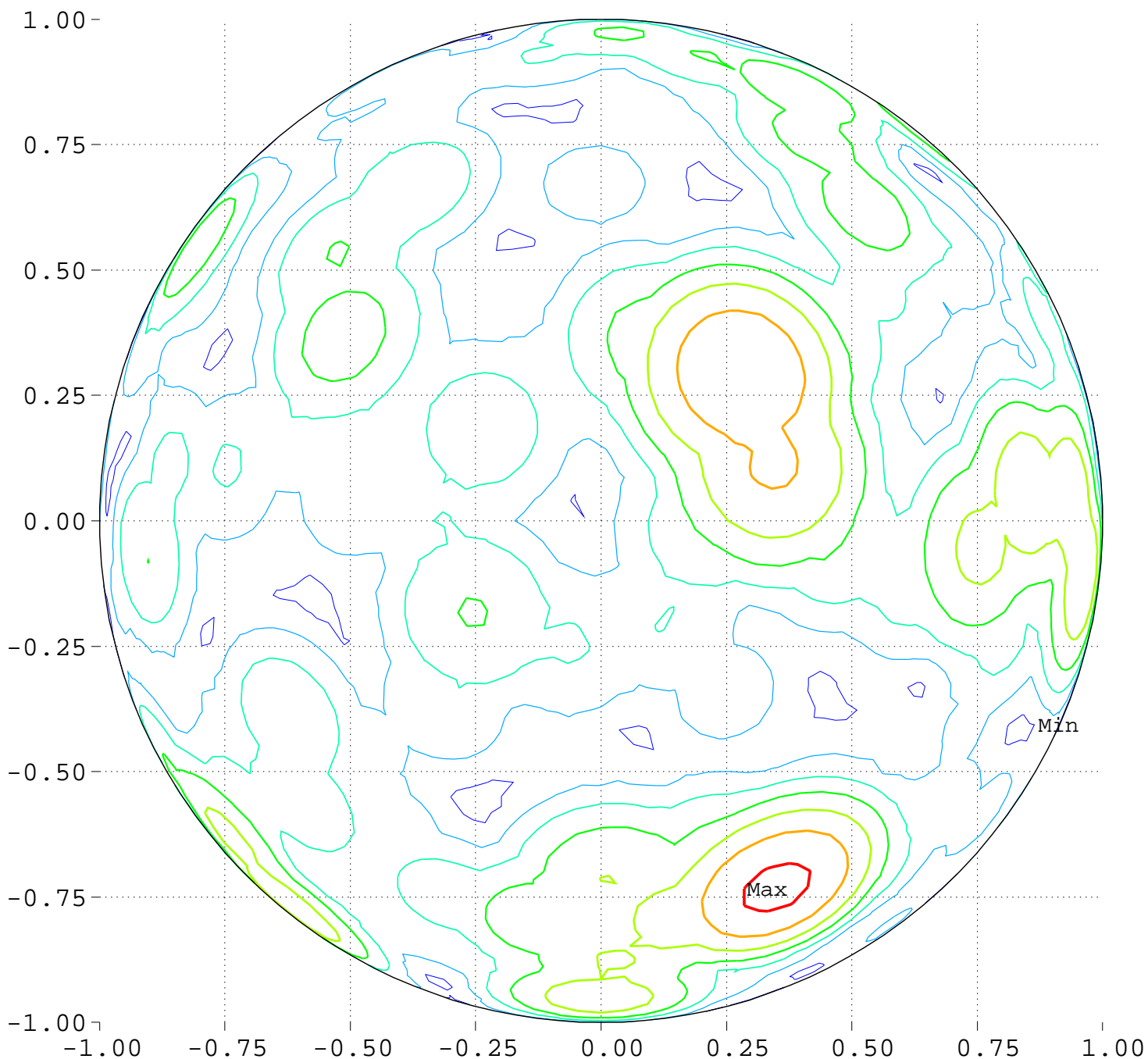
Minimum = 0.00 Maximum = 100.00

Contours around Nadirs of Sources



Maximize Minimum Intensity for 20 Sources
Lowest Intensity: 4.879836

South Pole, 0 Deg = Right, 270 Deg = Top



Minimum = 97.61 Maximum = 104.27

Contour Levels of Scaled Intensity

98.0000 99.0000 100.0000 101.0000 102.0000
103.0000 104.0000